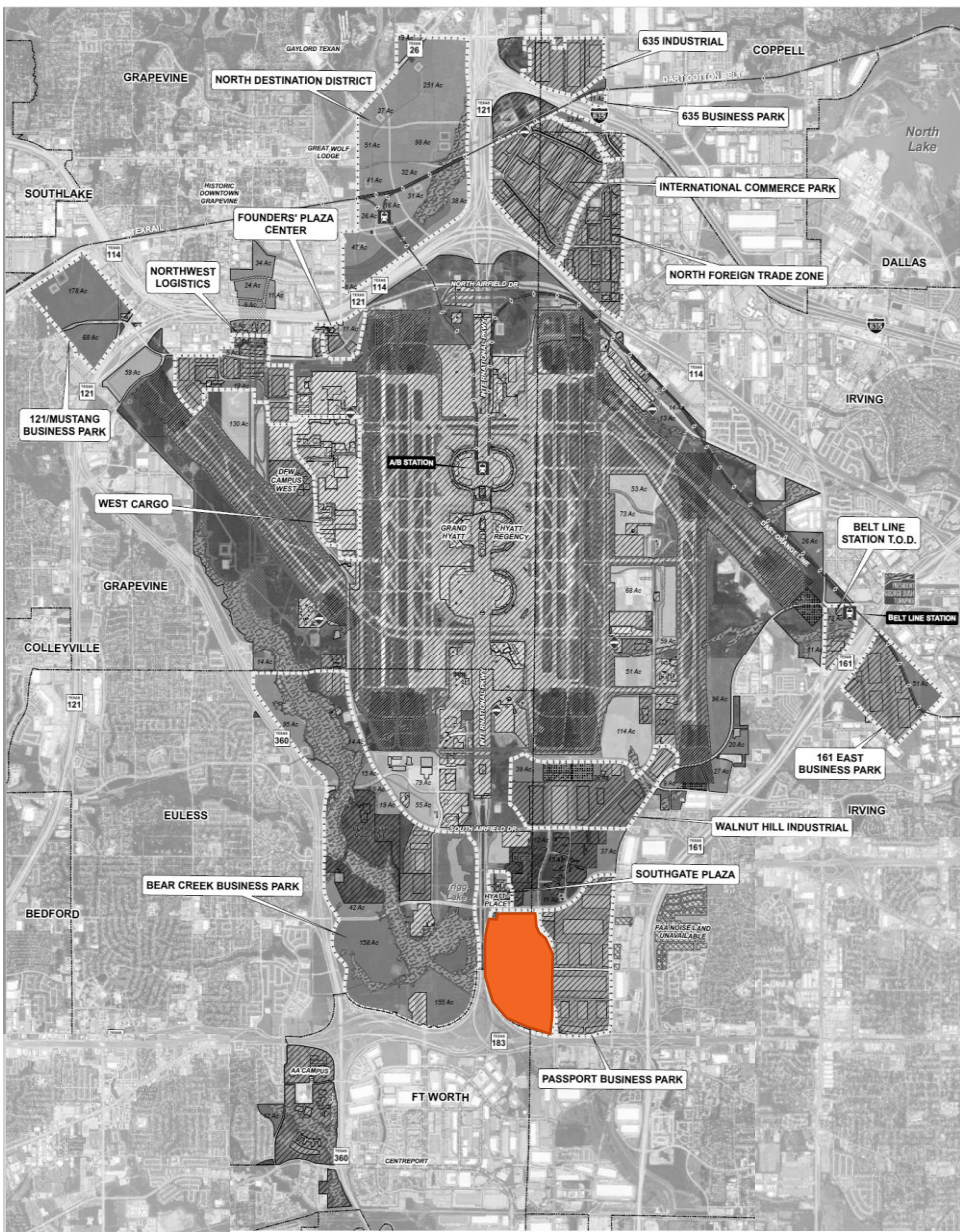


Passport Park West – Location & Overview



Developer: Trammell Crow Company

- ±180-acre, two-phase industrial development
- Seven modern logistics facilities
- Strategically located on the southern portion of DFW Airport



Passport Park West – Design & Development Progress



- ✈ ± 2.7MSF of logistics space
- ✈ Project cost ± 200M
- ✈ 7 ground leases executed
- ✈ LEED Certifications
- ✈ Infrastructure reimbursement agreement and shared access terms finalized
- ✈ Jurisdictional Streams Mitigation requirements addressed
- ✈ Compliance with protected species regulations
- ✈ Tree Conservation Plan approved and implemented