

Interactive Airport NEPA Exercise

Session Facilitators

Michelle Brantley
Director of Planning
Ontario International Airport

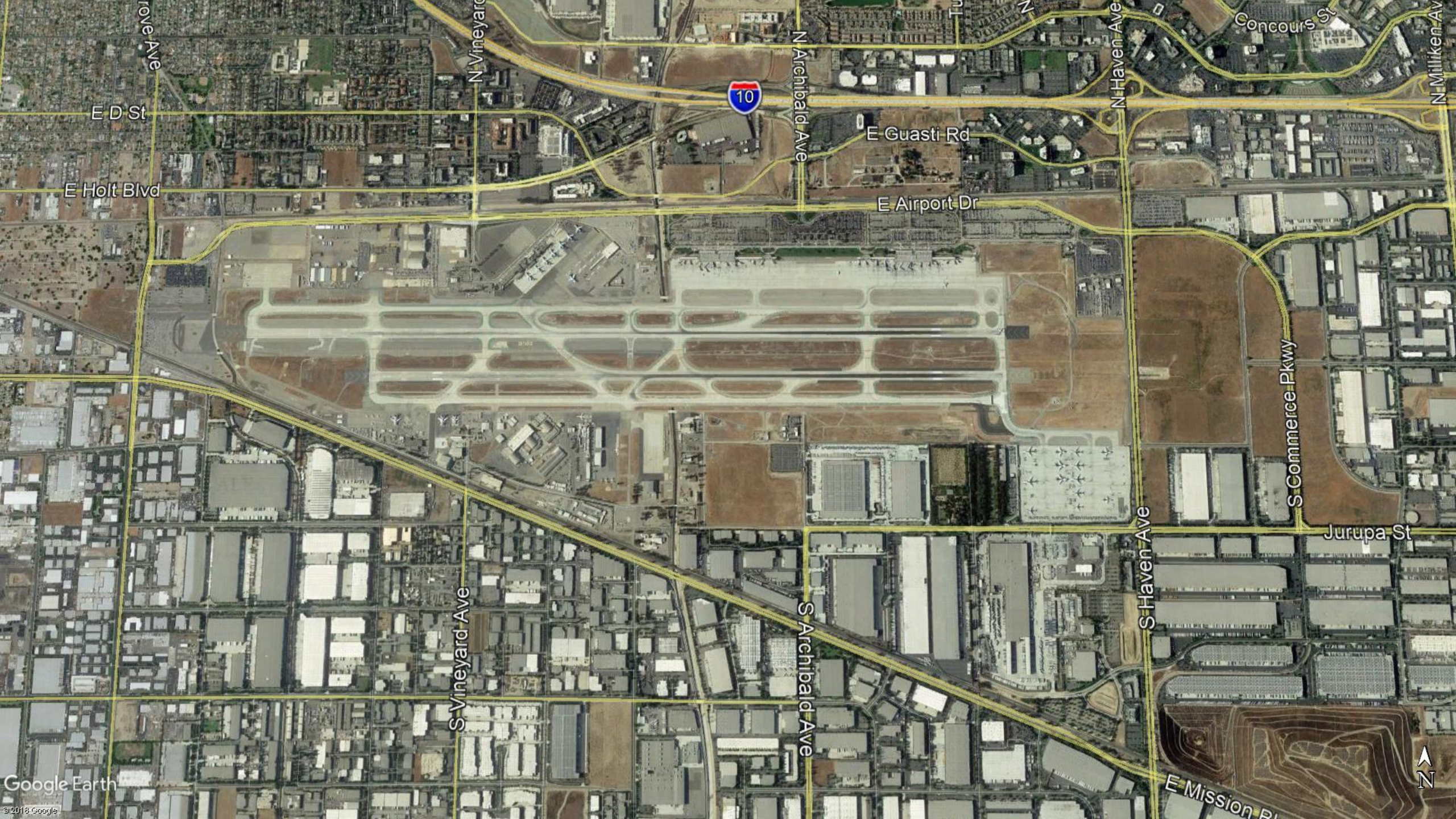
Dave Full
Vice President-Aviation
RS&H

Mary Vigilante
President
Synergy Consultants

QUE—What International Airport

- ➔ Airport is owned by a City, with an aviation department that manages the airport
- ➔ Airport is at eastern edge of City with another jurisdiction immediately to the east
- ➔ Existing facilities
 - Two runways
 - 12,200 feet by 150 feet
 - 10,200 feet by 150 feet
 - Two terminals
 - Terminal A = 12 gates
 - Terminal B = 14 gates
 - Consolidated rental car facility
 - Surface parking lots
 - Cargo ramp and hangars
 - General aviation ramps and hangars







General Aviation
Facilities

Terminal B

Terminal A

Rental Car
Facility

Runway 8L/26R – 12,200 feet
Runway 8R/26L – 10,200 feet

Cargo Facility

Airside Project

- ✈ Reconstruction of Runway 8L/26R
- ✈ Extension of Runway 8R/26L
- ✈ Enabling projects include:
 - Relocation of South Haven Avenue
 - Property acquisition
 - Demolition of buildings





City

East City

Runway Reconstruction

Relocation
of South
Haven Ave.

Runway Extension - 2,000 feet

Property
Acquisition

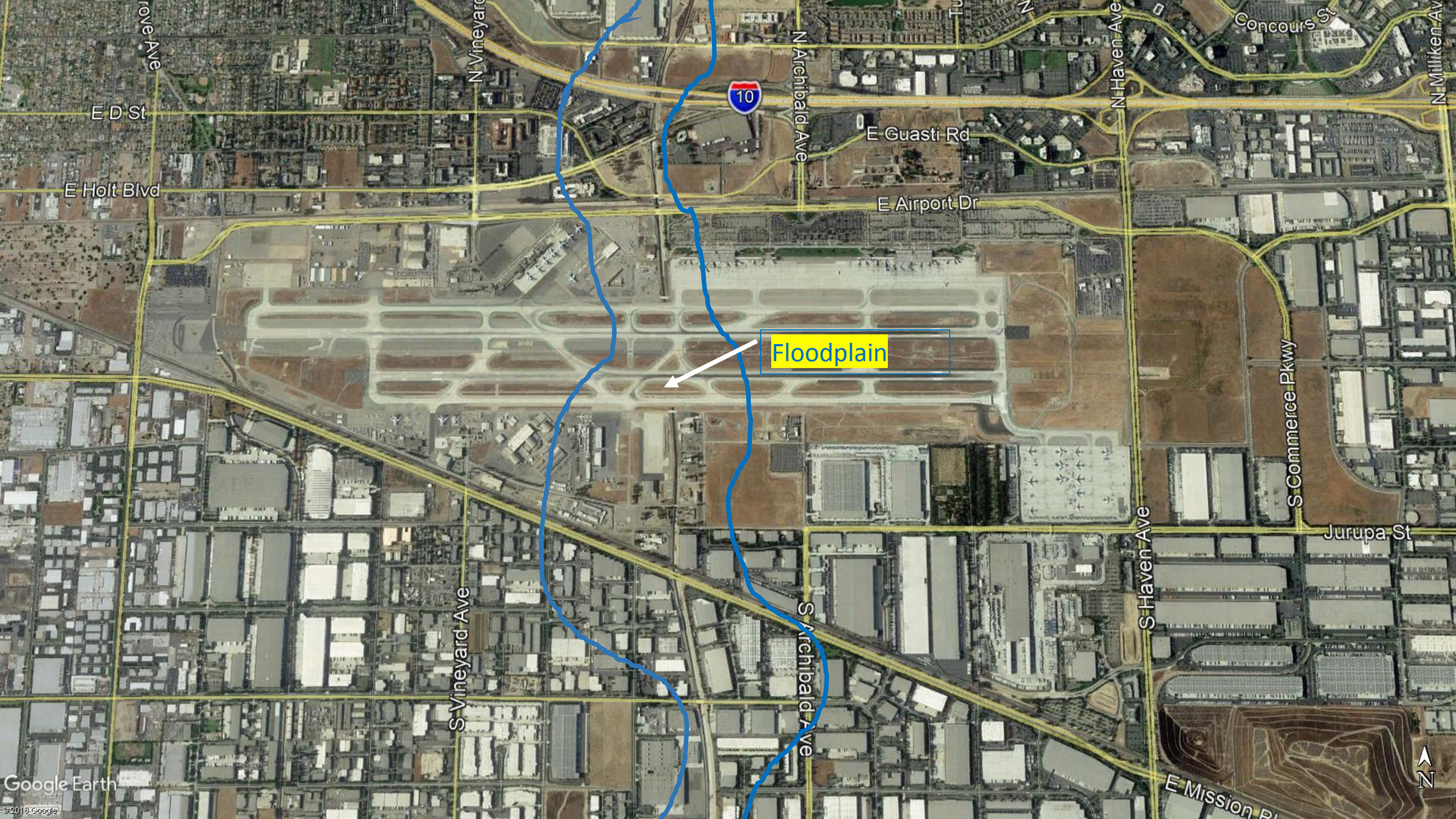
Landside Project

- ✈ New terminal (10 gates)
- ✈ Hotel
- ✈ Gas station
- ✈ Parking garage (three levels, 1,500 spaces)
- ✈ Enabling projects include:
 - Taxiway alignment modification
 - Modification to on-airport roadway system for parking garage access and egress

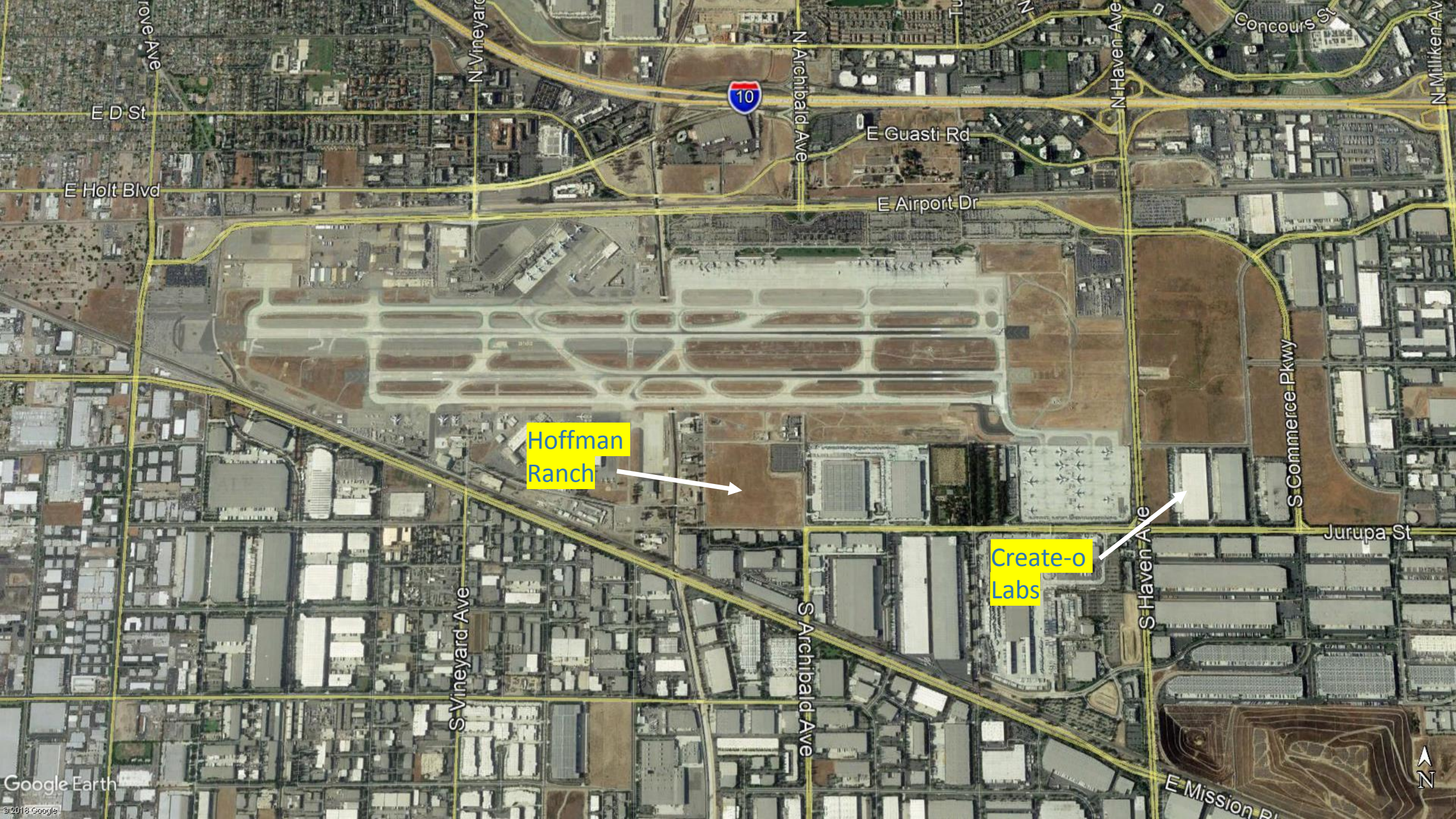


Environmental Characteristics





Floodplain



Hoffman
Ranch



Create-o
Labs



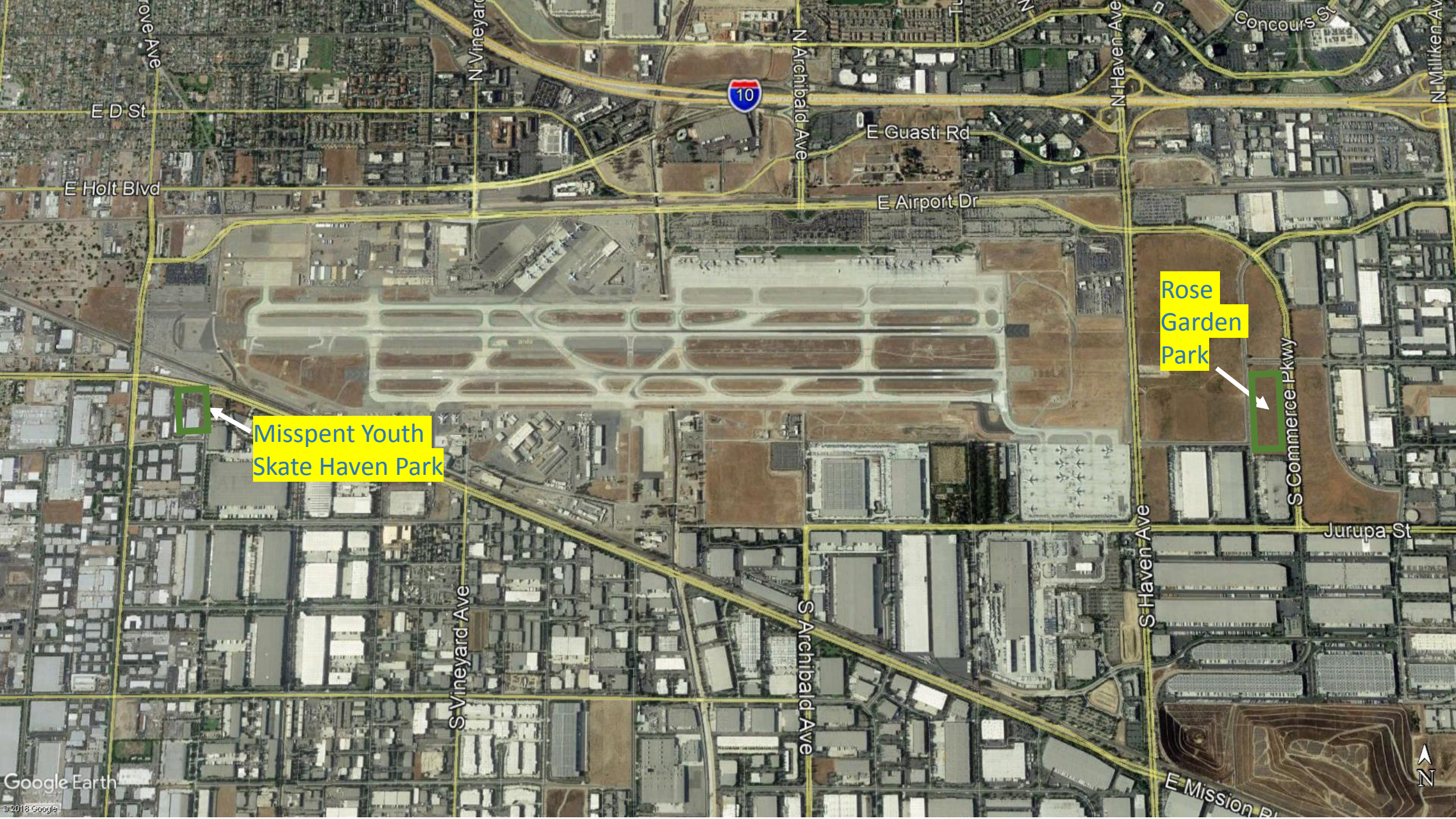


Long-nosed
jumping spider
habitat



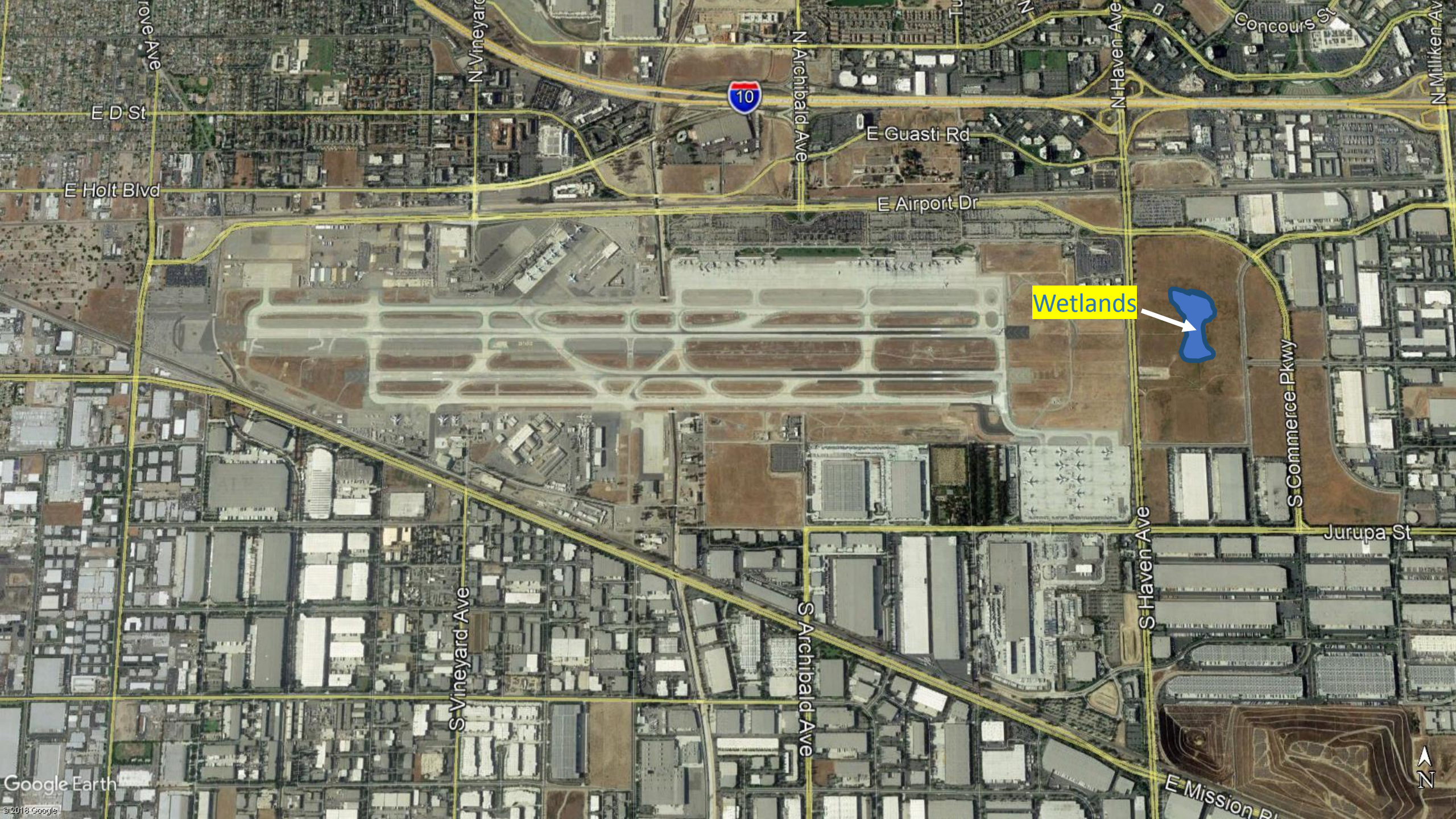
Hazardous
Soils





Misspent Youth
Skate Haven Park

Rose
Garden
Park

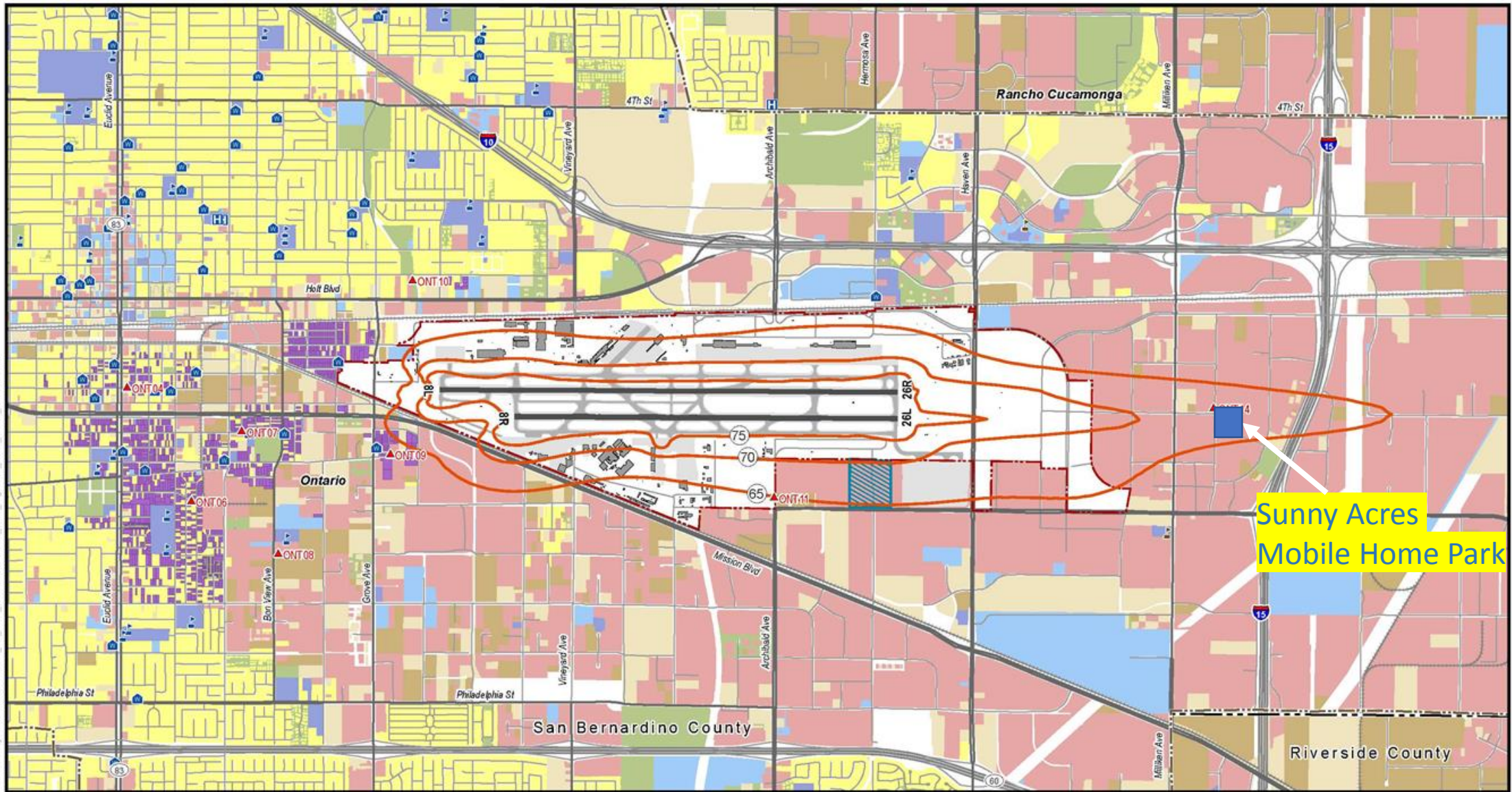


Wetlands



Ozone (severe), PM2.5 maintenance area, CO maintenance area





Data Source: LAWA (Airport Area), June 15, 2014; LAWA (Airport Runways), June 15, 2014; LAWA (Airport Buildings), June 15, 2014; CAL Atlas (Schools), March 11, 2014; CAL Atlas (Hospitals), March 11, 2014; CAL Atlas (Place of Worship), March 11, 2014; CAL Atlas (County Boundaries), March 10, 2014; Environmental Systems Research Institute, Inc. (Roads), May 03, 2012; NTAD (Railroads), June 23, 2014; CAL Atlas (Sales), March 11, 2014; CAL Atlas (Parks), March 11, 2014; CAL Atlas (Local Parks), May 03, 2012; LAWA (Parcel Data / Land Use), June 15, 2014; LAWA (Mitigated Parcels), June 15, 2014; Riverside County (Parcel Data / Land Use), March 5, 2014
 Prepared By: Harris Miller Miller & Hanson Inc., January 2015

- Forecast 2020 NEM Contour (65-75 dB CNEL)
- ▲ Noise Monitoring Station (NMS) Location
- ONT Airport Property Boundary
- Runway
- Airport Buildings
- Airport Pavement
- Municipal Boundary
- County Boundary

- Residential Use
- Public Use 1
- Public Use 2
- Recreational / Open Space
- Commercial Use
- Manufacturing and Production
- Vacant / Undefined
- Historic
- Noise Mitigated Parcel

- School
- College
- Hospital
- Place of Worship
- Primary Highways
- Primary Roads & Highways
- Local Roads
- Railroad

DRAFT



LA/Ontario International
 Los Angeles World Airports

Figure 14
 Forecast Conditions (2020) Noise Exposure Map

Environmental Characteristics

- ✈ Floodplains
- ✈ Two National Register of Historic Places eligible properties – Create-o Labs and Hoffman Ranch
- ✈ Endangered species habitat of the long-nosed jumping spider
- ✈ On-Airport hazardous soils
- ✈ Rose Garden Park, Misspent Youth Skate Haven Park
- ✈ Wetlands
- ✈ Ozone (severe), PM2.5 nonattainment area, and CO maintenance area
- ✈ Surface Traffic
- ✈ Sunny Acres Mobile Home Park (low-income and minority community)



Interactive Session #2 – NEPA Documentation

- What are the critical environmental issues that need to be resolved?
- What type of NEPA documentation would you expect to be required?
- How can the planning process conducted for this project assist in the preparation of the NEPA documentation?
- Who would you identify as stakeholders in the NEPA documentation process?
- Name three potential issues that could affect the timely completion of the NEPA documentation.

