

Interactive Airport Planning Exercise

Session Facilitators

Michelle Brantley
Director of Planning
Ontario International Airport

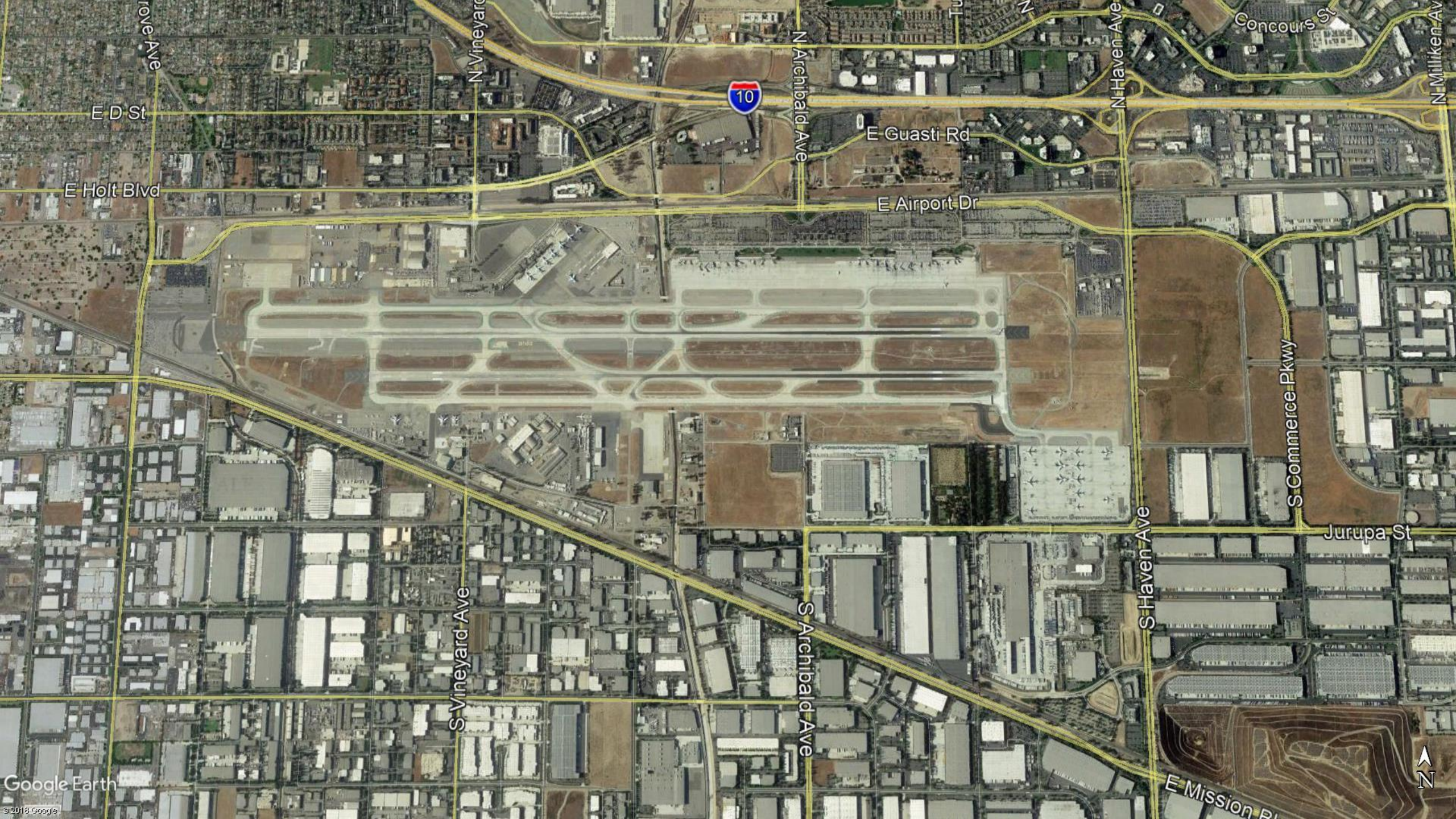
Dave Full
Vice President-Aviation
RS&H

Chris Oswald
Senior Vice President-Safety &
Regulatory Affairs
ACI-NA

QUE—What International Airport

- ➔ Airport is owned by a City, with an aviation department that manages the airport
- ➔ Airport is at eastern edge of City with another jurisdiction immediately to the east
- ➔ Existing facilities
 - Two runways
 - 12,200 feet by 150 feet
 - 10,200 feet by 150 feet
 - Two terminals
 - Terminal A = 12 gates
 - Terminal B = 14 gates
 - Consolidated rental car facility
 - Surface parking lots
 - Cargo ramp and hangars
 - General aviation ramps and hangars







General Aviation
Facilities

Terminal B

Terminal A

Rental Car
Facility

Runway 8L/26R – 12,200 feet

Runway 8R/26L – 10,200 feet

Cargo Facility

Airside Project

- ✈ Reconstruction of Runway 8L/26R
- ✈ Extension of Runway 8R/26L
- ✈ Enabling projects include:
 - Relocation of South Haven Avenue
 - Property acquisition
 - Demolition of buildings





City

East City

Runway Reconstruction

Relocation
of South
Haven Ave.

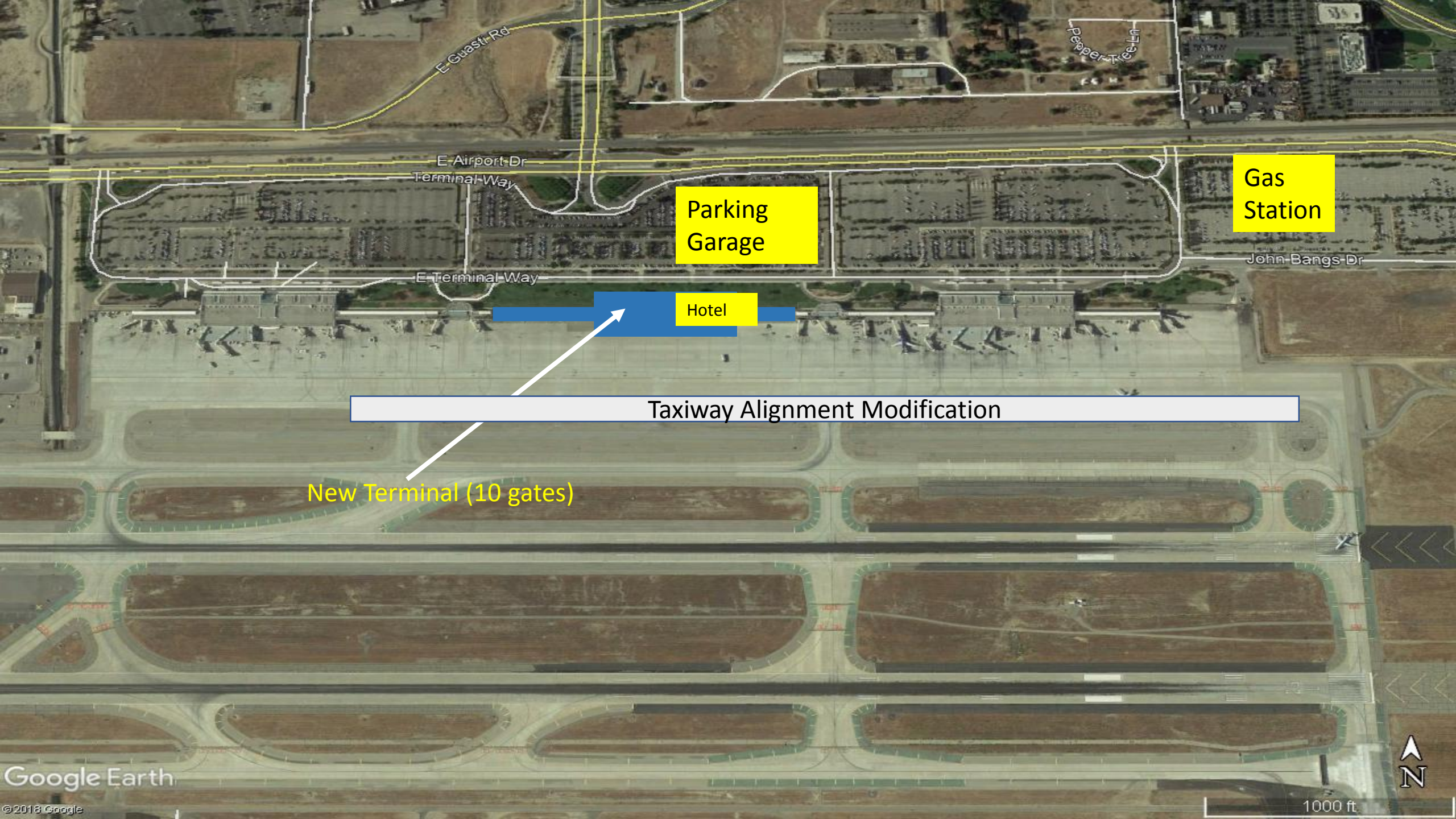
Runway Extension - 2,000 feet

Property
Acquisition

Landside Project

- ✈ New terminal (10 gates)
- ✈ Hotel
- ✈ Gas station
- ✈ Parking garage (three levels, 1,500 spaces)
- ✈ Enabling projects include:
 - Taxiway alignment modification
 - Modification to on-airport roadway system for parking garage access and egress





E Guasti Rd

Pepper Tree Ln

E Airport Dr
Terminal Way

Parking
Garage

Gas
Station

John Bangs Dr

E Terminal Way

Hotel

Taxiway Alignment Modification

New Terminal (10 gates)



Interactive Session #1 – Planning

- ➔ What are the critical planning issues that need to be resolved?
- ➔ What should be included in your initial planning scope of work?
- ➔ What sources of information would you use to resolve those planning issues?
- ➔ What deliverables would be useful for the client to have at the end of the planning process?
- ➔ Identify three potential pitfalls to a successful planning process?

