

Staying On-Track with the Planning & NEPA Process

Session Moderator

Katie van Heuven
Partner
KKR

Session Panelists

Dave Full
Vice President-Aviation
RS&H

Mike Hines,
Manager-Planning &
Environmental Division
FAA Office of Airports

Gail Orendorff
Manager-Environmental
Law Branch
FAA Office of Chief Counsel

Section 163 Case Studies

Staying On-Track with the Planning & NEPA Process

Mike Hines

Manager-Planning & Environmental Division

FAA Office of Airports

michael.hines@faa.gov

December 4, 2019



SECTION 163

COMPLETED CASE STUDIES



**Federal Aviation
Administration**

Kansas City, KS (MCI)

KANSAS CITY INTERNATIONAL AIRPORT - SITE OPTION A



Federal Aviation
Administration

Boise, ID (BOI)

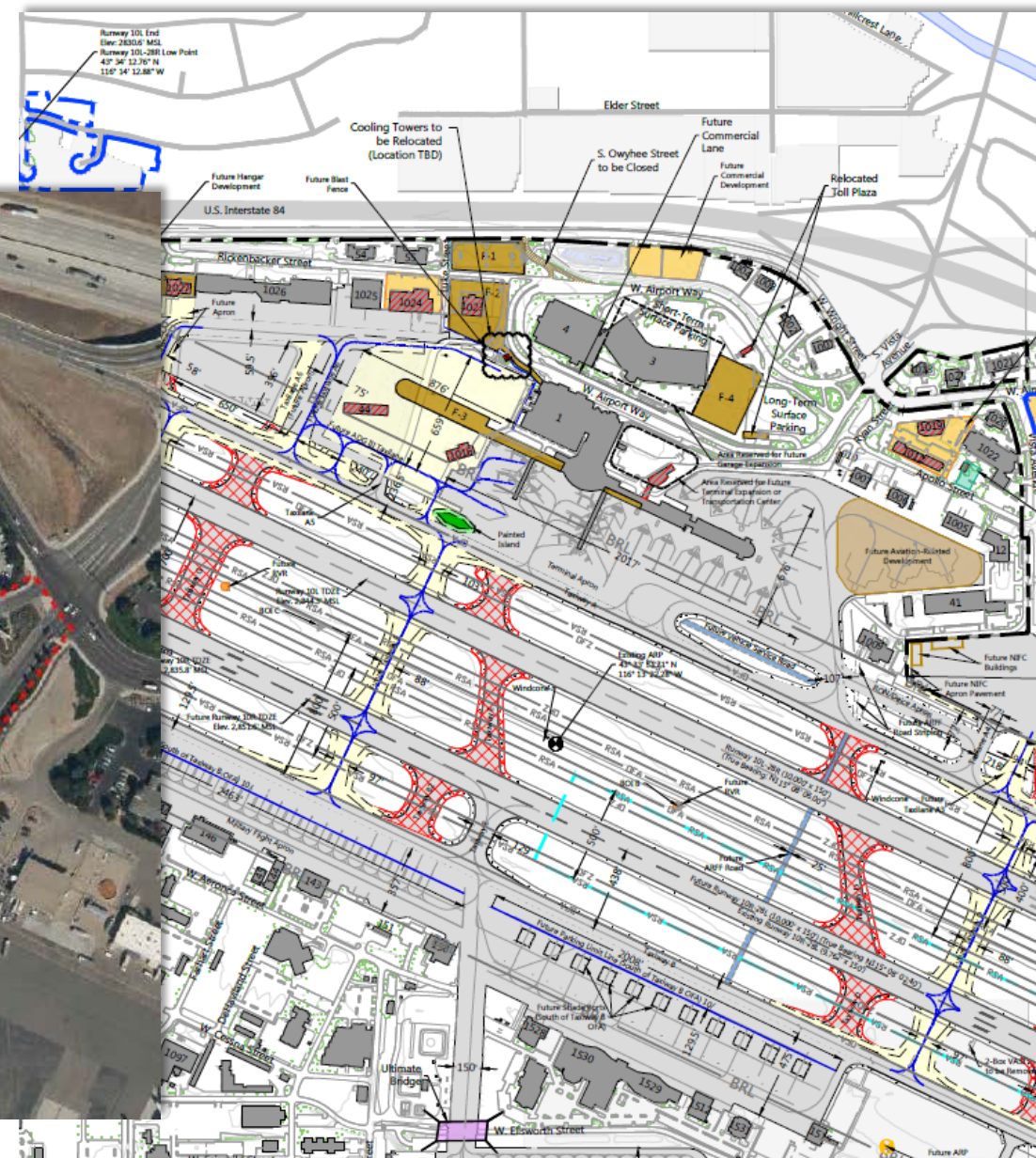


East Parking Garage Expansion

Site Elevation = 2846'

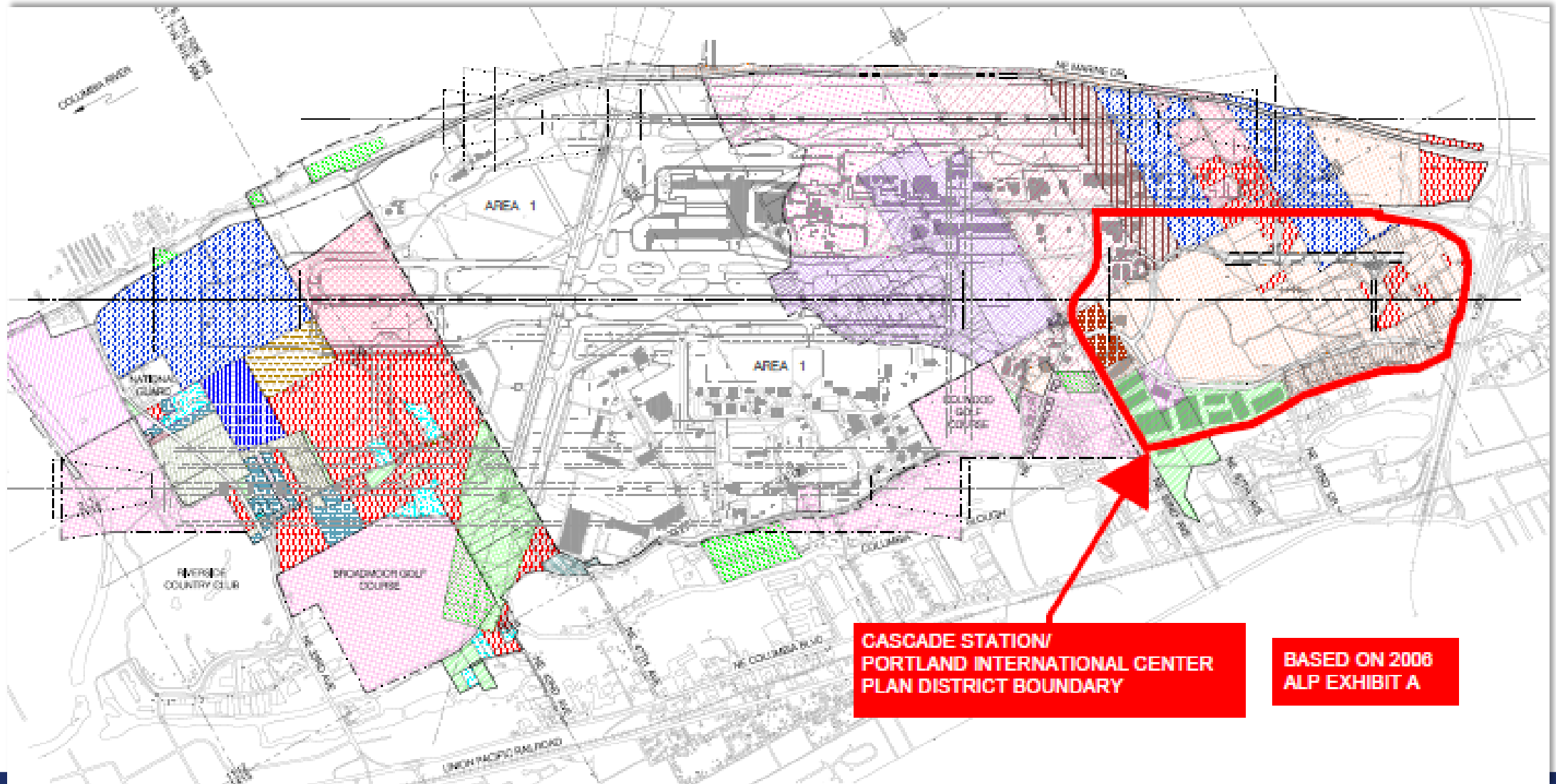
Building Height = 52' AGS

	Latitude	Longitude
NE corner	43 34' 11.27"	-116 13' 7.66"
NW corner	43 34' 12.25"	-116 13' 10.13"
SE corner	43 34' 7.86"	-116 13' 9.48"
SW corner	43 34' 8.83"	-116 13' 12.20"



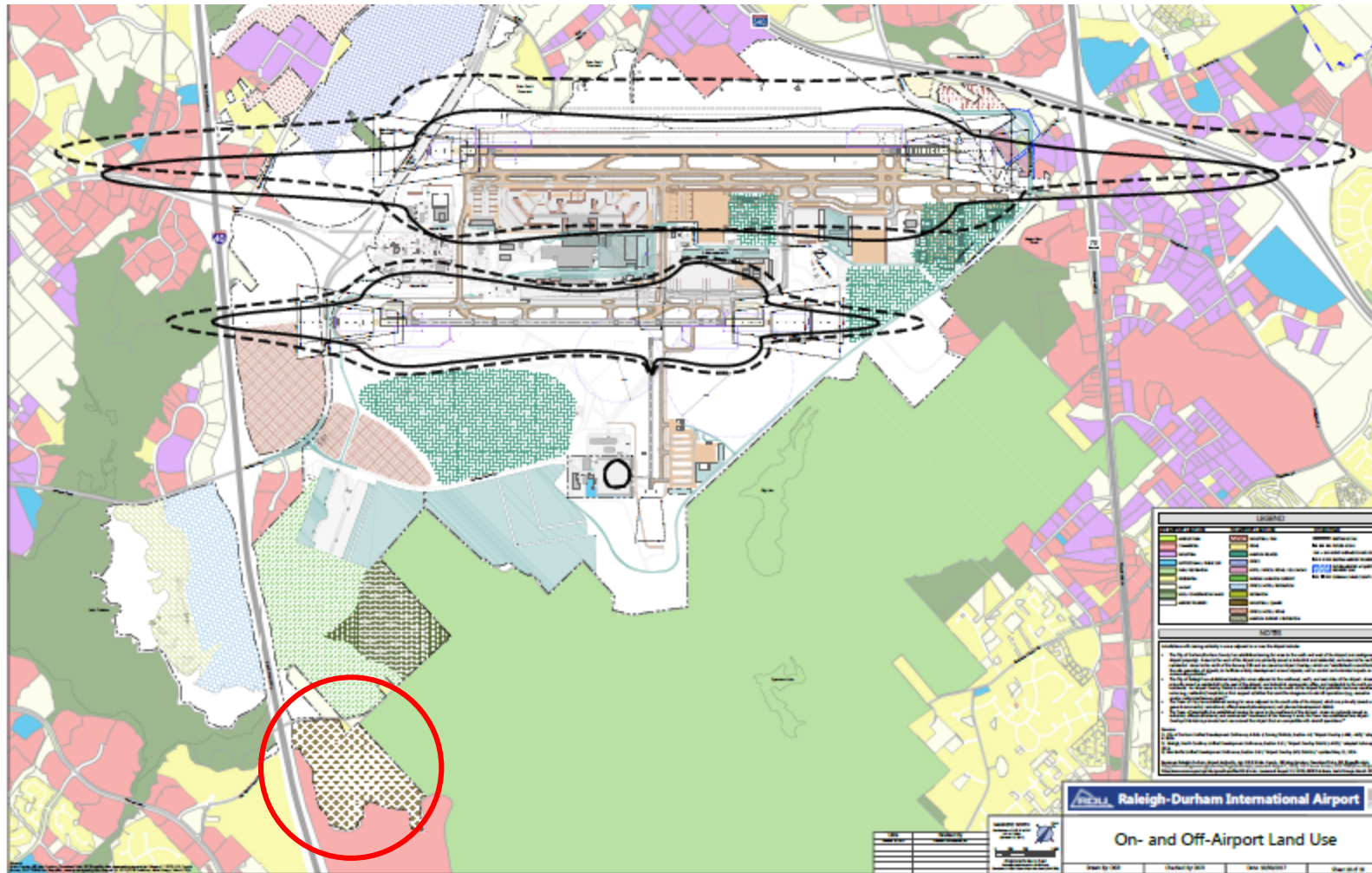
Federal Aviation
Administration

Portland, OR (PDX)



Federal Aviation
Administration

Raleigh-Durham, NC (RDU)



Raleigh-Durham, NC (RDU)

