

MSA
SECURITY[®]
Aviation Solutions[™]



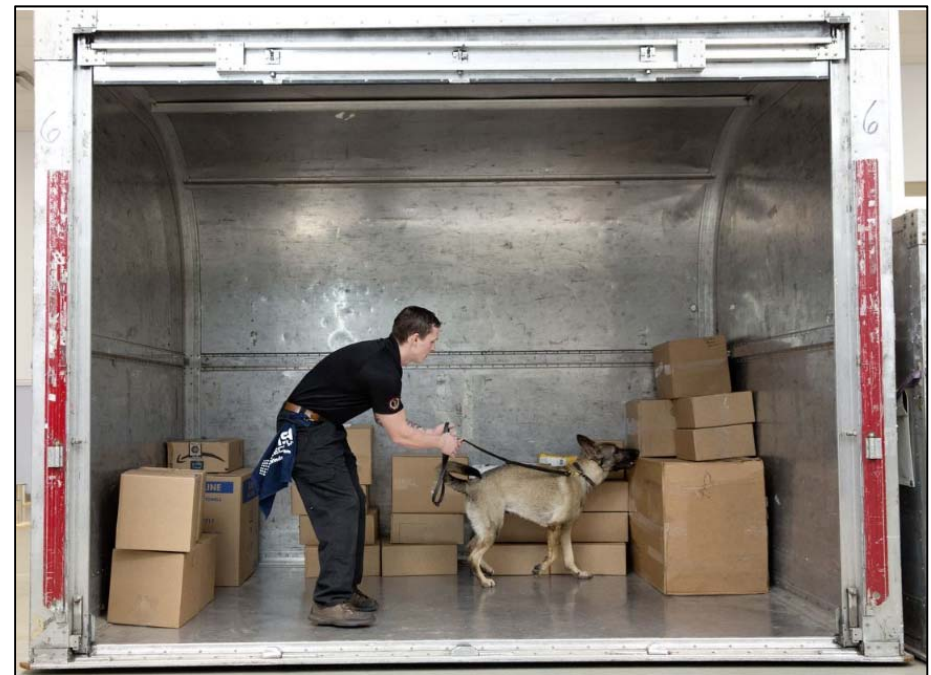
October 9, 2019



3PK9 Program Regulations



- Program Regulations
 - What K9s can screen:
 - ULDs, Cookie Sheets, Break Bulk, Pallets, Loose or bagged Cargo
 - K9s cannot screen:
 - Dangerous Goods, certain perishables, steel drums
 - Screening Standards:
 - Minimum requirements
 - Proper air flow
- Since inception:
 - Understanding the client
 - Airport Client vs CCSF (off-airport)



Program Training



- MSA's Training Program
 - The foundation of any effective EDC Training Program **must** include access to train on both live high and low explosive odors
 - *MSA EDCs train every 30 days*
 - Not only is a properly trained dog the best bomb detector, the speed and efficiency a dog provides is **unmatched** by manmade technology

U.S. Department of Defense Research
Well-trained dogs are the single most effective method of explosive detection – their success is irreplicable



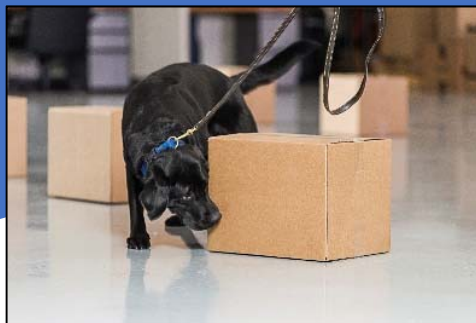
MSA's Patented Advanced Alarm Resolution



- Patented comprehensive screening system ensures a layered approach for full confidence screening

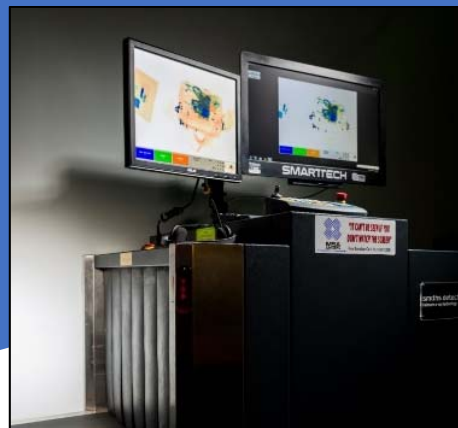
EDC

- EDC searches build of the container during loading
- Upon indication, packages are extracted, lined up next to the container, and a second sweep is conducted



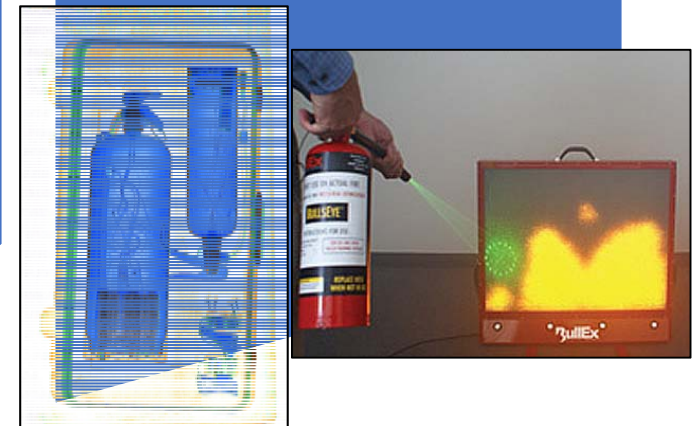
X-Ray Screening

- The package on which the canine indicated is run through X-ray machine for further inspection



SmartTech®

- X-ray image is immediately transmitted to MSA EOC for analysis and resolution



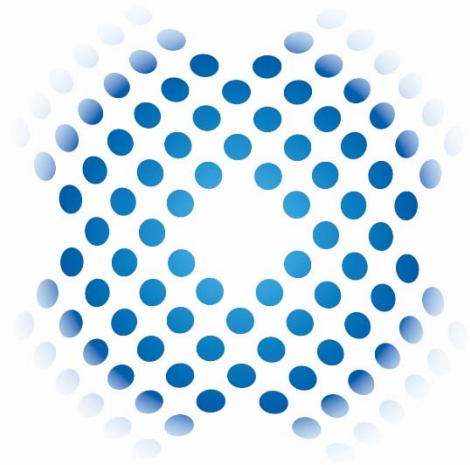
Implementation at Local Level

- When implementing Third Party Screening, MSA collaborates with:

- Local airport authorities
- Local bomb squad
- FBI
- Local TSIs



- Come together to train on a packaged solution in a one-on one conversation
- Response protocols:
 - After an alert has been detected, MSA advises clients to follow their security plan and contact local law enforcement



MSA
SECURITY®

Questions? Contact Us:

New York
(212) 509-1336

Boston
(781) 519-6494

San Diego
(858) 609-1541

National Capital Region
(703) 657-4095

Hong Kong
(852) 3690-8886