

ACI-NA Annual Tampa



Session 9B

Integrating IT considerations in Airport Capital Project Delivery

September 15, 2019

**Eddie Clayson
Maintenance Director
SLC Department of Airports**

Session 9B



Dilbert.com @ScottAdamsSays



12-22-16 © 2016 Scott Adams, Inc. /Dist. by Universal Uclick



Session 9B



SLC Project Details Challenges Successes



SLC Project Details



Design: HOK

Delivery method: CMAR

HDJV – Terminal South Concourse

OAJV – North Concourse

SLC Project Details



Challenges



Plan of Execution
Systems Integrator
Market conditions
Continuity
Plans and reviews
Speed
Technology changes

Challenges



Plan of Execution

2.9 MAJOR ACTIVITIES

- 2.9.1 Finalize location of existing assets
- 2.9.2 Evaluate and finalize node locations in concourses A, B, C and D
- 2.9.3 Identify final location of data center
 - 2.9.3.1 Develop data center project budget
- 2.9.4 Develop special systems packaging

Challenges



Systems Integrator



Challenges



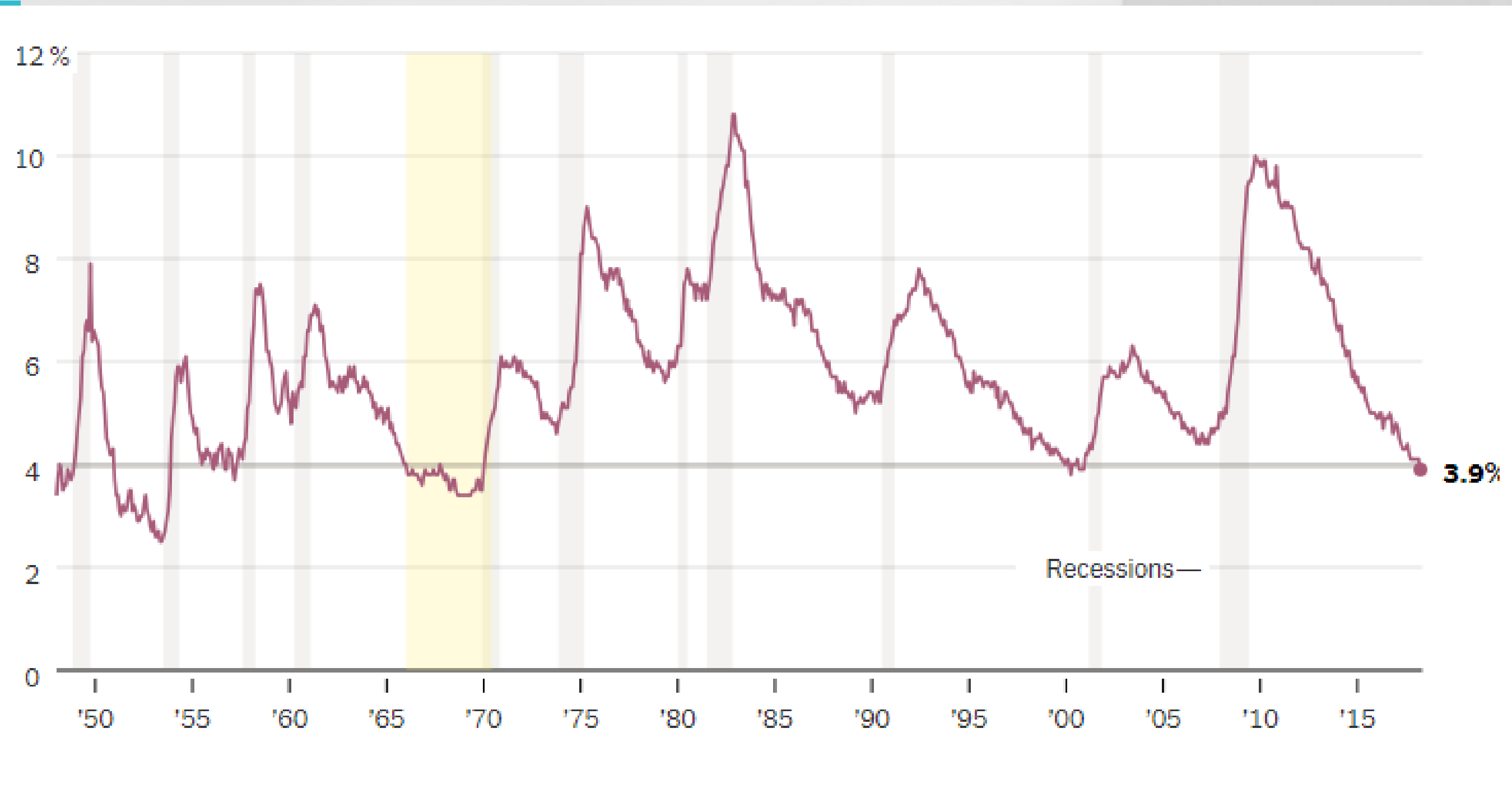
Systems Integrator



Challenges



Market conditions



Challenges



Continuity



Challenges



Plans and Reviews

- ✓ Plans are incomplete
- ✓ Plans are not coordinated
- ✓ Plans lack detail



Challenges



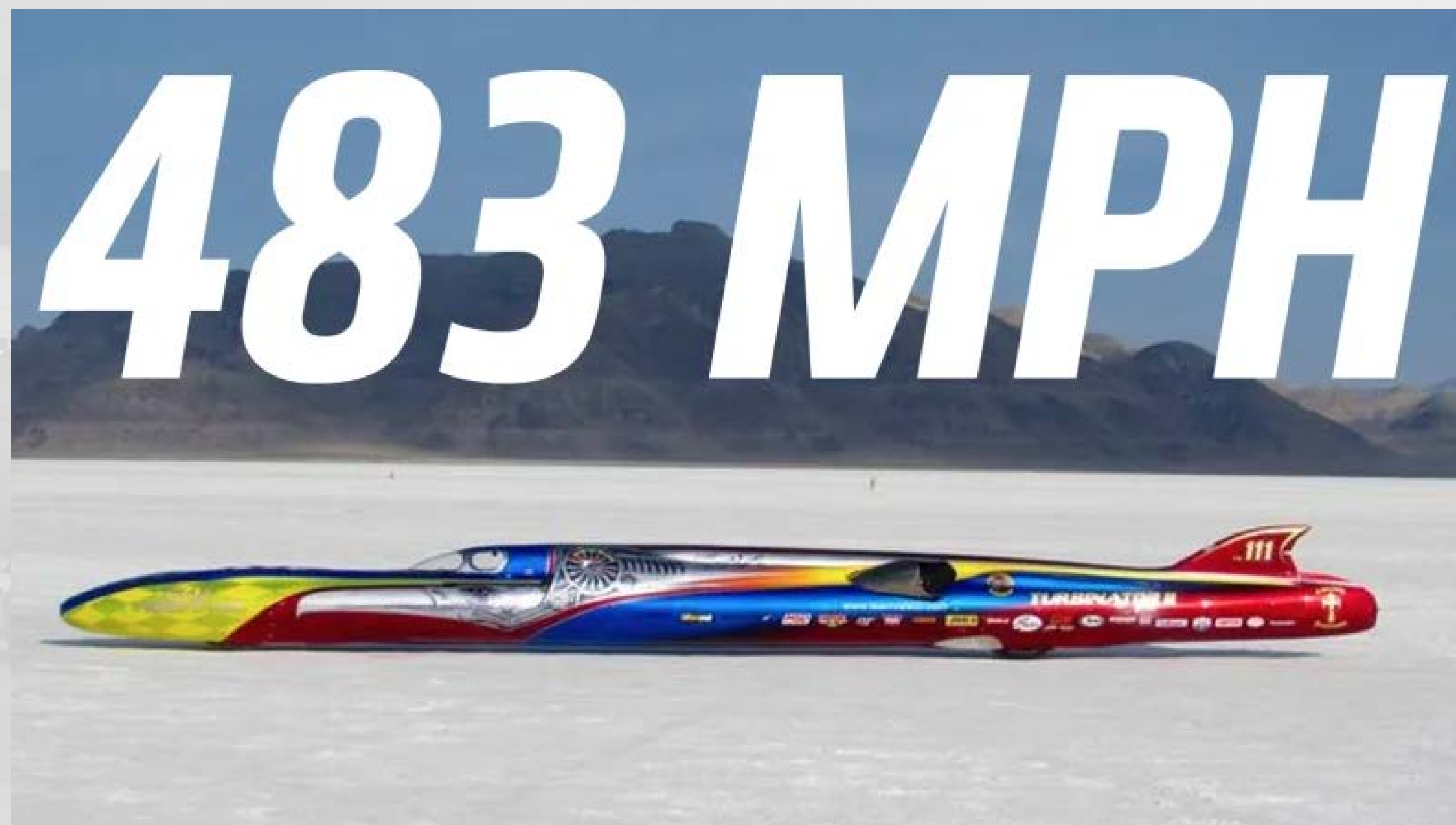
Plans and Reviews

- B. In no instance shall any product be submitted that has been identified by the manufacturer as being “End of Life” (EoL) within one (1) year of the product submittal date. EoL is defined as the date when the manufacturer determines that the product will no longer be manufactured or supported by the manufacturer. Where products are identified as EoL, the submitted product shall be the manufacturer’s replacement product that adheres to the contemporary technical and operational equivalent as defined above.
- C. All active electronic equipment (computers, servers, cameras, networking switches, etc.) shall be submitted for review to the airport no earlier than 120 calendar days prior to installation. Where long lead items (greater than 120 calendar days) are identified, the Contractor shall submit a request in writing, along with evidence from the manufacturer that the item’s lead time is greater than 120 calendar days. Electronic products that are identified as long-lead items may be excepted if they are identified in the initial submittal schedule. Long-lead electronic product submittals may be made based on the estimated lead time, plus 60 calendar days.
- D. All passive communications related equipment (copper, fiber, equipment cabinets, etc.) shall be submitted for review to the airport no earlier than 180 calendar days prior to installation. Where long lead items (greater than 180 calendar days) for procurement are identified, the Contractor shall submit a request in writing, along with evidence from the manufacturer that the item’s lead time is greater than 180 calendar days.

Challenges



Speed



Challenges



Speed



PLANNING

There is never time to do it right, but always time to do it over.

Challenges



Technology changes



Successes



Teamwork Recognize accomplishments



Success



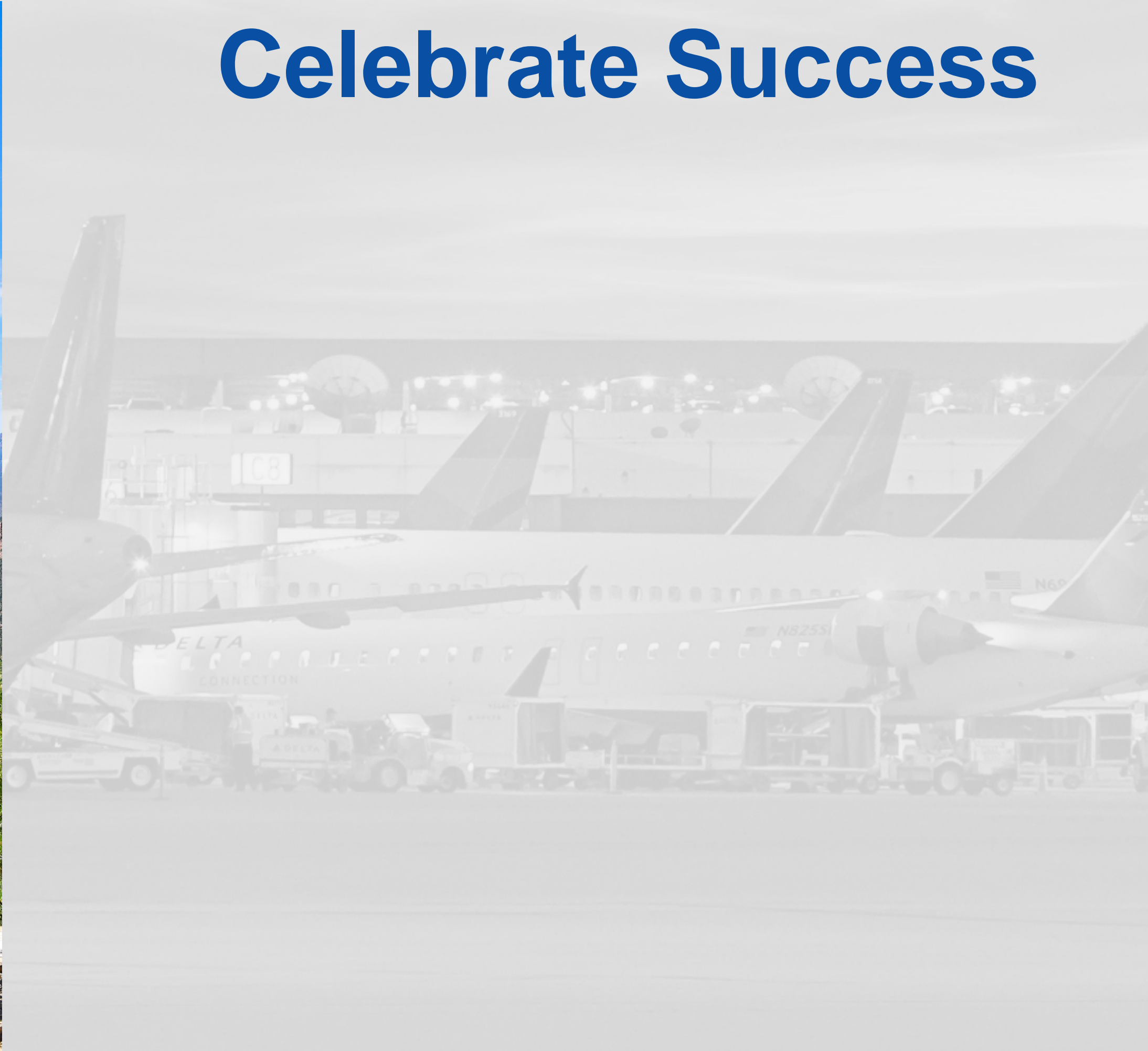
Teamwork



SLC Project Details



Celebrate Success



SLC Project Details

