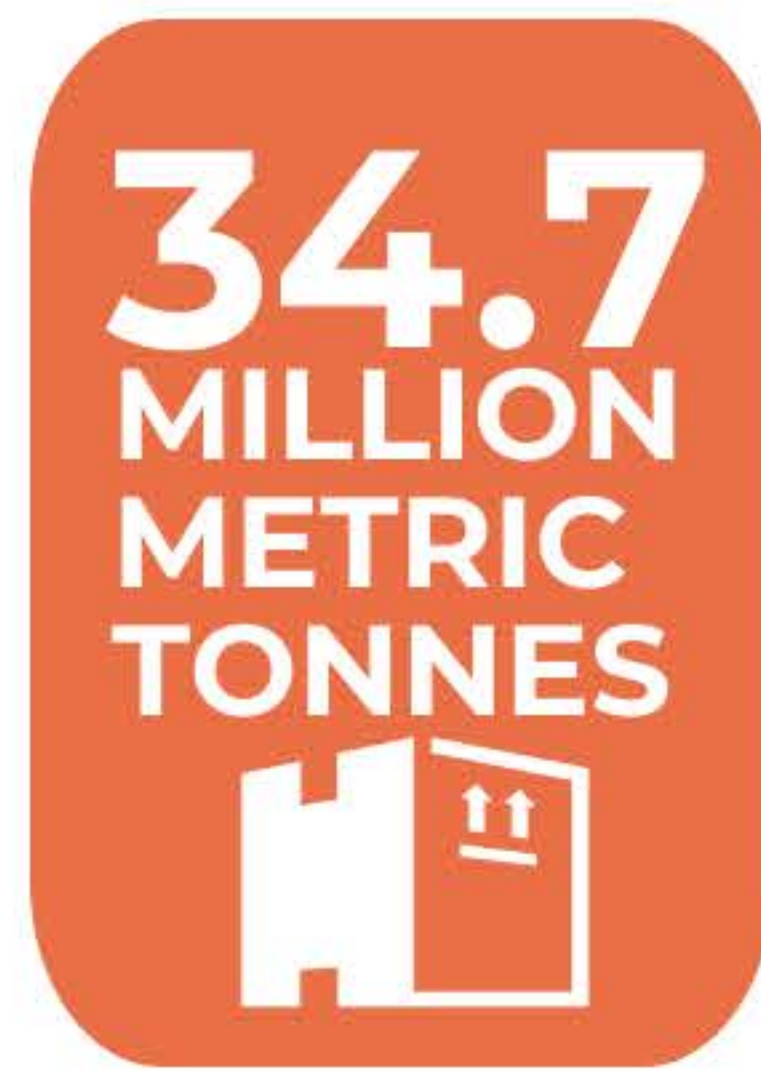
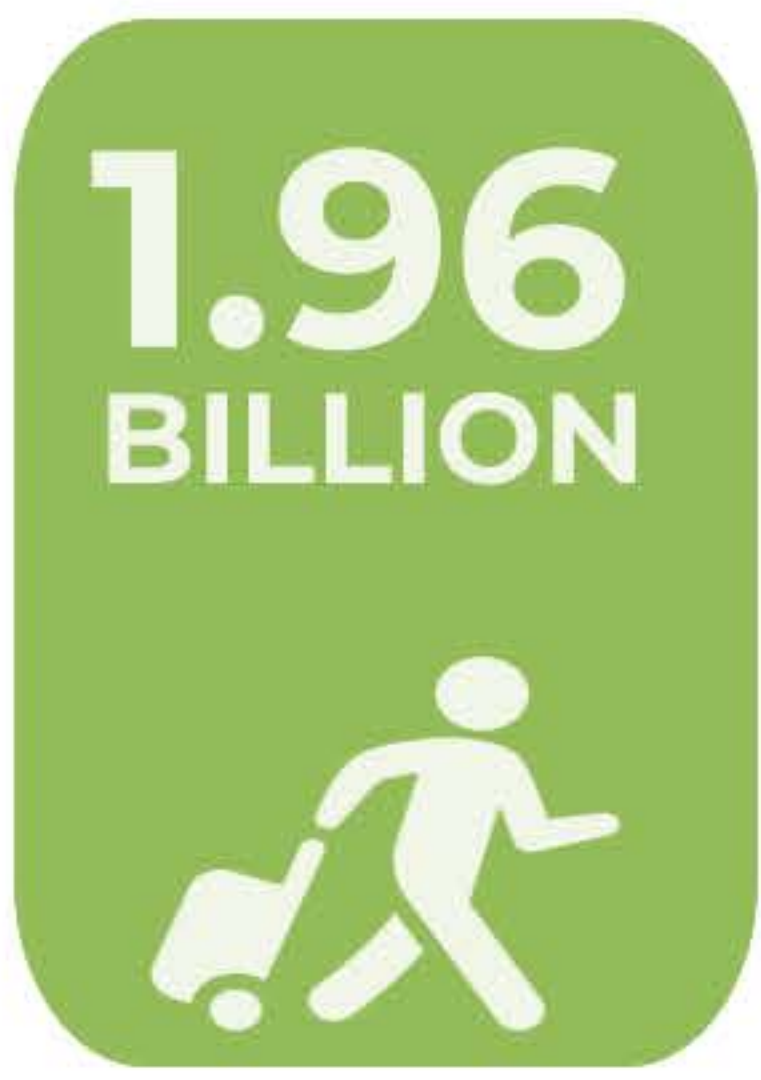


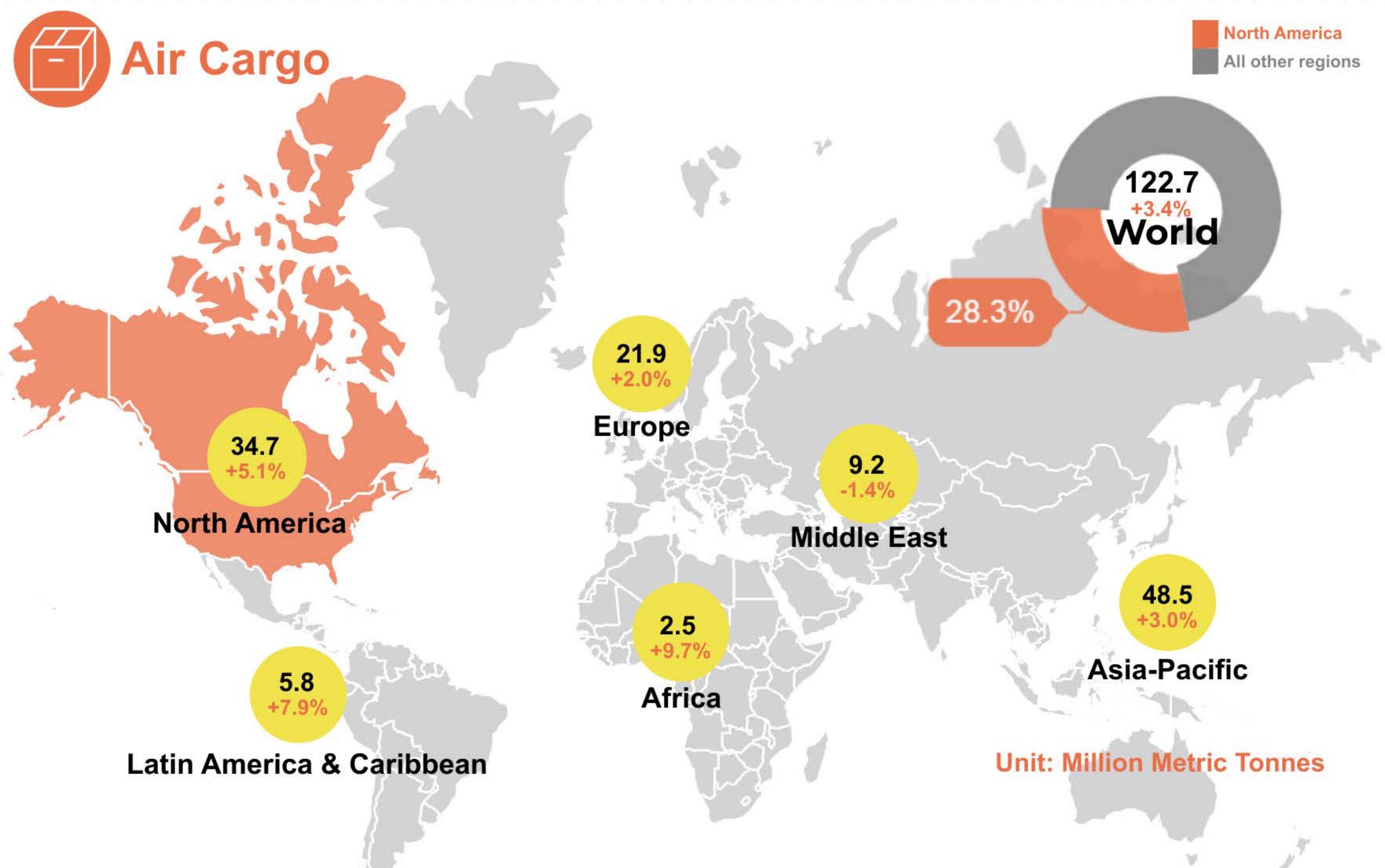
# 2018 NORTH AMERICA AIRPORT TRAFFIC SUMMARY

North American airports have continued their steady growth in passenger traffic, air cargo and aircraft movement in 2018. Passenger traffic growth rate was 5.0%, indicating a significant increase of passengers travelling through North American airports. Air cargo traffic increased at an overall rate of 5.1%, with domestic freight growing slightly faster than international freight.



**2017-2018**

	Passenger Traffic	Air Cargo	Aircraft Movements
	+5.0%	+5.0%	+1.8%
	+5.9%	+6.6%	+2.0%
	+5.0%	+5.1%	+1.8%

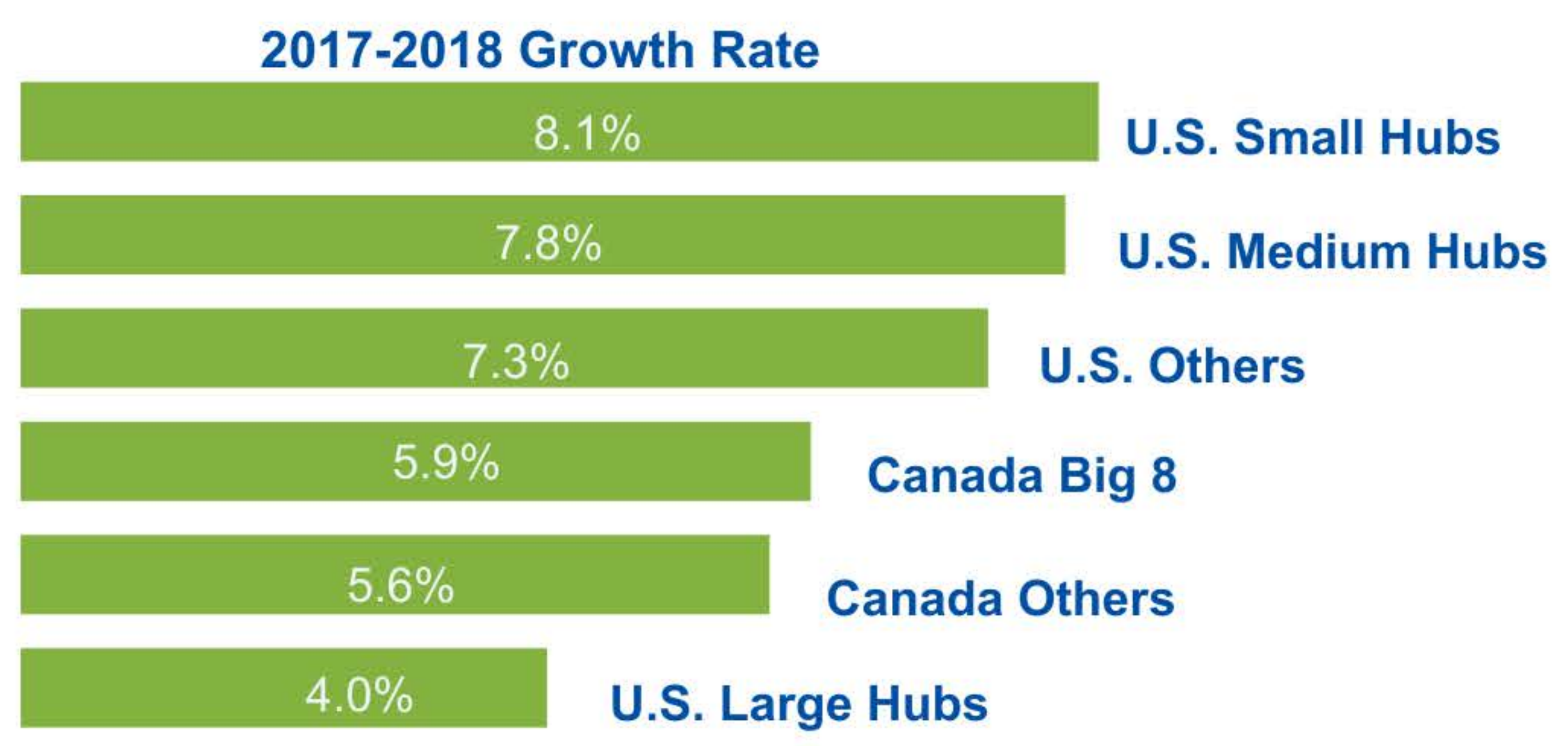


In 2018, most regions experienced growth in air cargo. North American airports handled 28.3% of the world air cargo volume, 2nd to Asia-Pacific.

## Passenger Traffic

All airport categories in North America have seen increases in 2018, with U.S. small and medium hub airports leading in growth.

U.S. Hubs: FAA CY 2018 Passenger Boarding Data  
Canada Big 8: YYZ, YVR, YUL, YYC, YEG, YOW, YWG, YHZ.



## Aircraft Movements

North American remained the world's busiest region, accounting for **33.4%** of the world's aircraft movements.



- Total Passengers: arriving + departing passengers + direct transit passengers counted once
- Total Cargo: loaded + unloaded freight + mail in metric tonnes. Data includes transit freight.
- Total Movements: landing + take-off of an aircraft



# BUSIEST & FASTEST GROWING AIRPORTS IN 2018



## PASSENGER TRAFFIC

## AIR CARGO

## AIRCRAFT MOVEMENTS

Busiest Airports

**Hartsfield-Jackson**  
Atlanta International Airport®

**LAX**  
Los Angeles  
World Airports

**O'HARE**  
INTERNATIONAL AIRPORT

**Memphis**  
INTERNATIONAL AIRPORT

**Louisville**  
INTERNATIONAL AIRPORT

**Ted Stevens Anchorage**  
International Airport  
AeroNexus®

**O'HARE**  
INTERNATIONAL AIRPORT

**Hartsfield-Jackson**  
Atlanta International Airport®

**LAX**  
Los Angeles  
World Airports

Fastest Growing Airports

Large Hub	(FLL) Fort Lauderdale FL, United States	10.6%
	(SAN) San Diego CA, United States	9.3%
	(TPA) Tampa FL, United States	8.5%

Medium Hub	(JAX) Jacksonville FL, United States	15.6%
	(SJC) San Jose CA, United States	14.7%
	(AUS) Austin TX, United States	13.9%

Small & Non Hub	(LBF) North Platte NE, United States	330.8%
	(DDC) Dodge City KS, United States	277.8%
	(LWB) Lewisburg WV, United States	153.5%

Canada	(YXH) Medicine Hat AB, Canada	56.9%
	(YXC) Cranbrook BC, Canada	29.8%
	(YXX) Abbotsford BC, Canada	24.3%

Large Cargo	(PHL) Philadelphia PA, United States	20.0%
	(CVG) Cincinnati OH, United States	19.1%
	(IAH) Houston TX, United States	17.1%

Medium Cargo	(RFD) Rockford IL, United States	56.6%
	(SMF) Sacramento CA, United States	56.6%
	(TPA) Tampa FL, United States	35.8%

Small Cargo	(HVN) New Haven CT, United States	400.0%
	(BTR) Baton Rouge LA, United States	328.6%
	(TRI) Blountville TN, United States	240.0%

Canada	(YOW) Ottawa ON, Canada	46.3%
	(YMX) Montreal QC, Canada	12.9%
	(YUL) Montreal QC, Canada	10.9%

Large Hub	(SAN) San Diego CA, United States	7.5%
	(FLL) Fort Lauderdale FL, United States	6.6%
	(TPA) Tampa FL, United States	5.9%

Medium Hub	(SJC) San Jose CA, United States	11.2%
	(ABQ) Albuquerque NM, United States	10.2%
	(SMF) Sacramento CA, United States	9.4%

Small & Non Hub	(PIH) Pocatello ID, United States	26.7%
	(MLB) Melbourne FL, United States	26.5%
	(CHO) Charlottesville VA, United States	24.6%

Canada	(YXC) Cranbrook BC, Canada	37.7%
	(YXH) Medicine Hat AB, Canada	23.2%
	(YXY) Whitehorse YT, Canada	21.2%

Note:  
**Large Cargo** ≥ 500,000 metric tonnes  
**Medium Cargo** 100,000-499,999 metric tonnes  
**Small Cargo** < 100,000 metric tonnes

- Total Passengers: arriving + departing passengers + direct transit passengers counted once
- Total Cargo: loaded + unloaded freight + mail in metric tonnes. Data includes transit freight.
- Total Movements: landing + take-off of an aircraft

