



Beyond Preclearance: The “now” for Future Airports

Solomon Wong President & CEO, InterVISTAS
May 31, 2019 Airports Canada Conference



Every 5-7 Years

Canada-US Border Cooperation Agenda Set ...

.....But Where is the Future Vision?



COALITION PARTNERS



COALITION PARTNERS (cont'd)



THE CANADIAN
CHAMBER
OF COMMERCE



U.S. Chamber of Commerce



Airlines for America®
We Connect the World



Business Council
of Canada



CROSSING PATHS BUILDING FUTURES
THE PEACE BRIDGE



U.S. TRAVEL
ASSOCIATION



BEYOND
PRECLEARANCE



TIAC AITC

FedEx



ASSOCIATION OF CANADIAN PORT AUTHORITIES
ASSOCIATION DES ADMINISTRATIONS PORTUAIRES CANADIENNES



CANADIAN AMERICAN
CABC
BUSINESS COUNCIL

Canadian Global
Cities Council 

CHAIR



GREATER VANCOUVER
BOARD OF TRADE

Calgary
Chamber



Edmonton
Chamber
of Commerce

The Chamber
The Winnipeg Chamber of Commerce



BRAMPTON
BOARD OF TRADE



TORONTO
REGION
BOARD OF TRADE



The Chamber of Commerce
of Metropolitan Montreal

HALIFAX
CHAMBER OF
COMMERCE



Western
Logistics



IATA



Canadian Trucking Alliance
Alliance Canadienne du Camionnage



OMCA
BETTER TOGETHER



COUNCIL OF THE GREAT LAKES REGION
REIMAGINING OUR FUTURE TODAY



\$28
trillion economy

460
million residents

2.5x
international
traffic forecasts

New Border Vision

 Predictable

 Secure

 Integrated



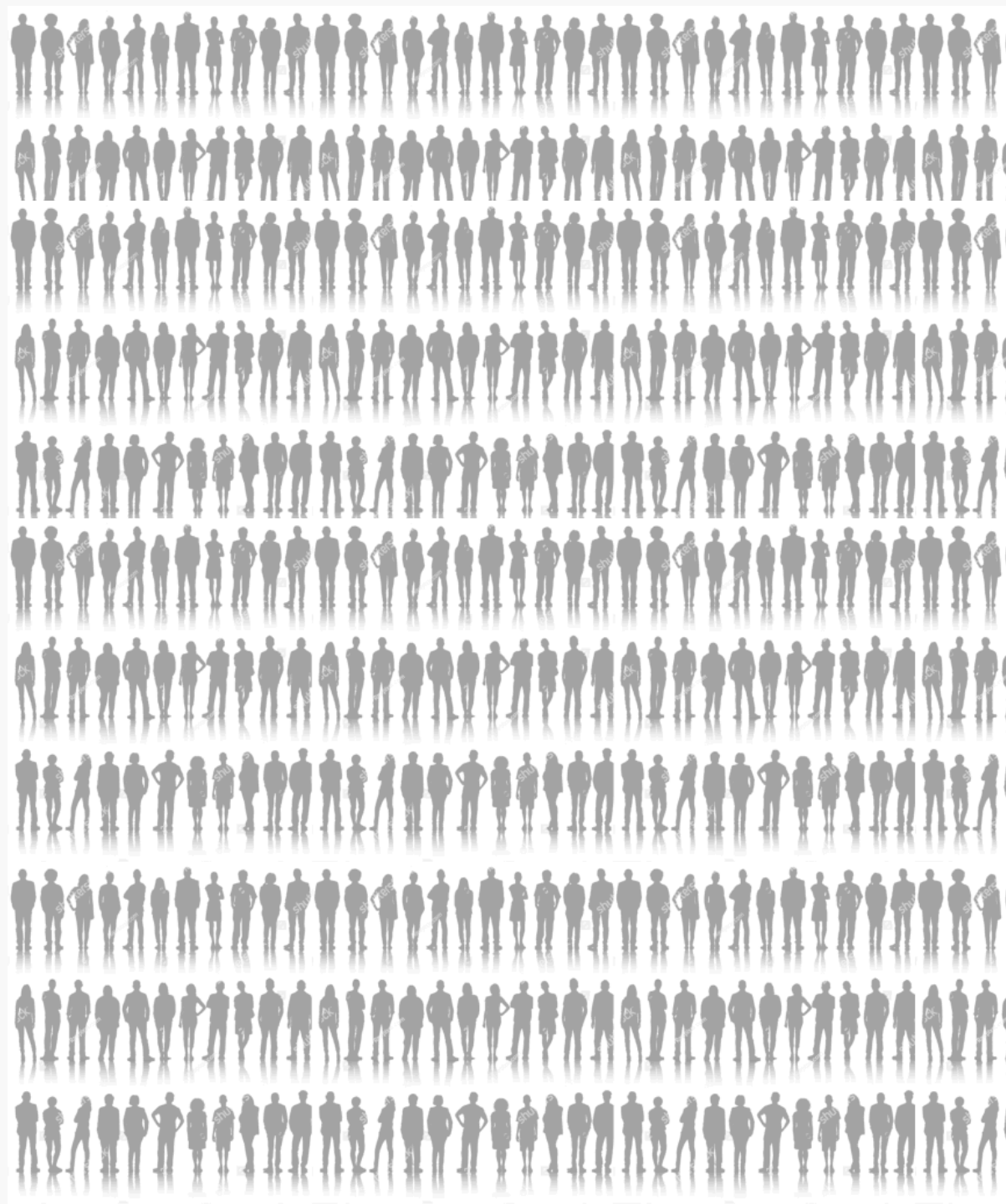
BEYOND PRECLEARANCE

The Next Generation Canada–U.S. Border

October 5, 2018




**Download the White Paper:
www.beyondpreclearance.org**



84,000

officers in 2018

processing people/goods
(US-Canada)


A background pattern of numerous small, white silhouettes of people in various poses, arranged in a grid-like fashion across the left side of the image. A dark blue speech bubble points from the text on the left towards the green area on the right.

**what do we need
in 20 years?**

84,000

officers in 2018

processing people/goods
(US-Canada)

A vertical strip of silhouettes of people in various poses, running down the left side of the slide. Two dark blue speech bubble shapes point from the text on the left towards the right.

**what do we need
in 20 years?**

**shortfall of
38,000 officers**

84,000

officers in 2018

processing people/goods
(US-Canada)

EVOLUTION: TRAVEL

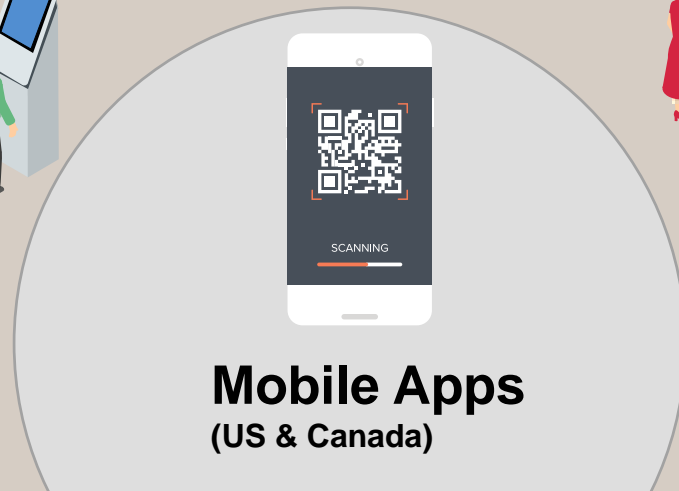
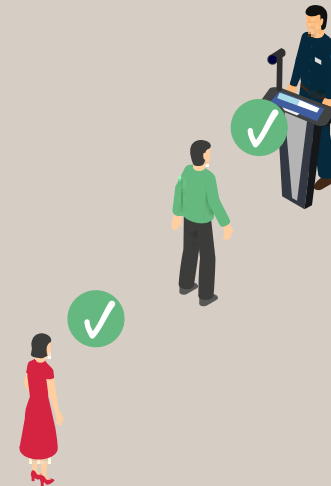
1971-
Primary Booths
(Canada & US)

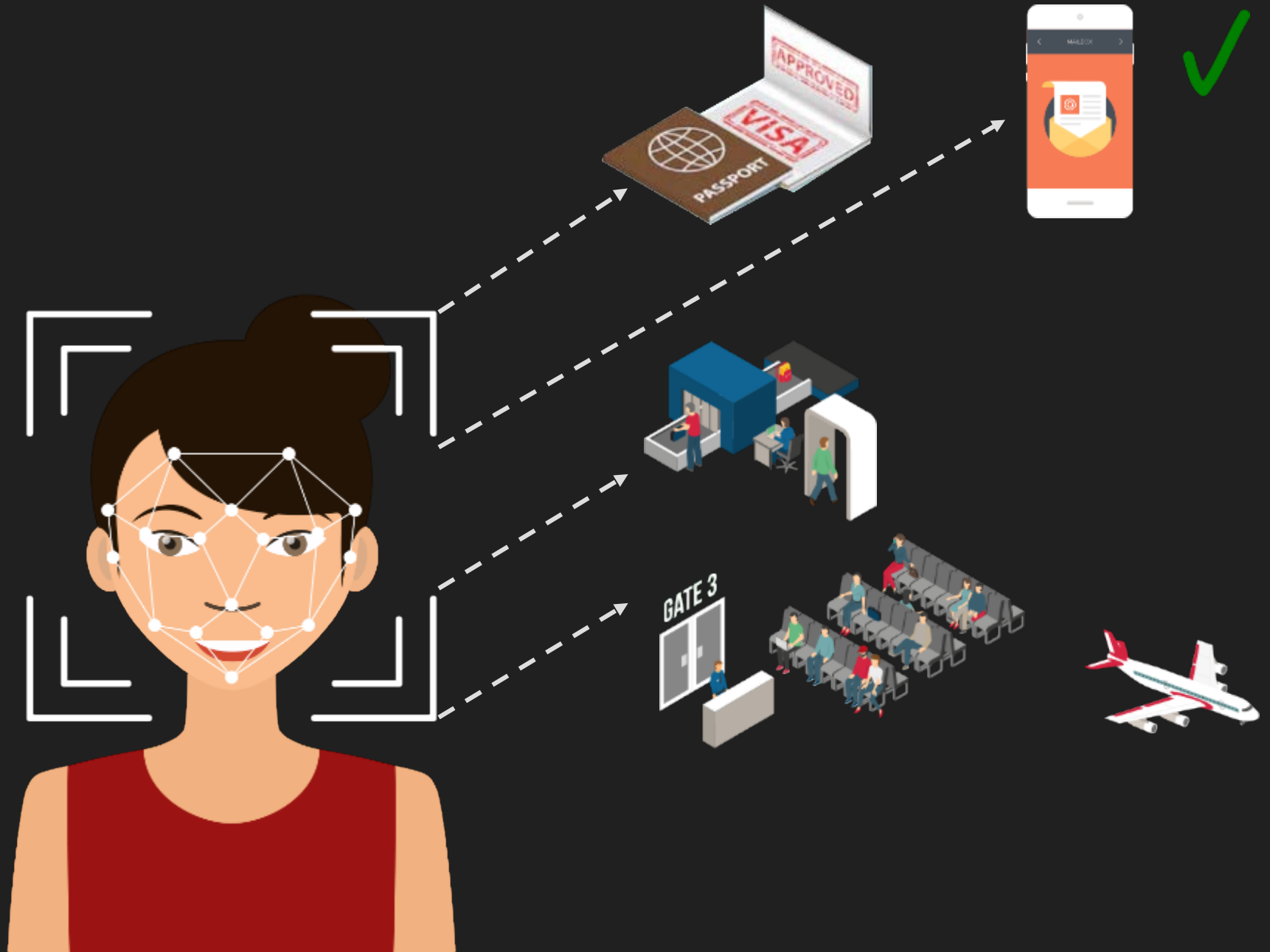


2006/12-Present
Border Kiosks
(US & Canada)

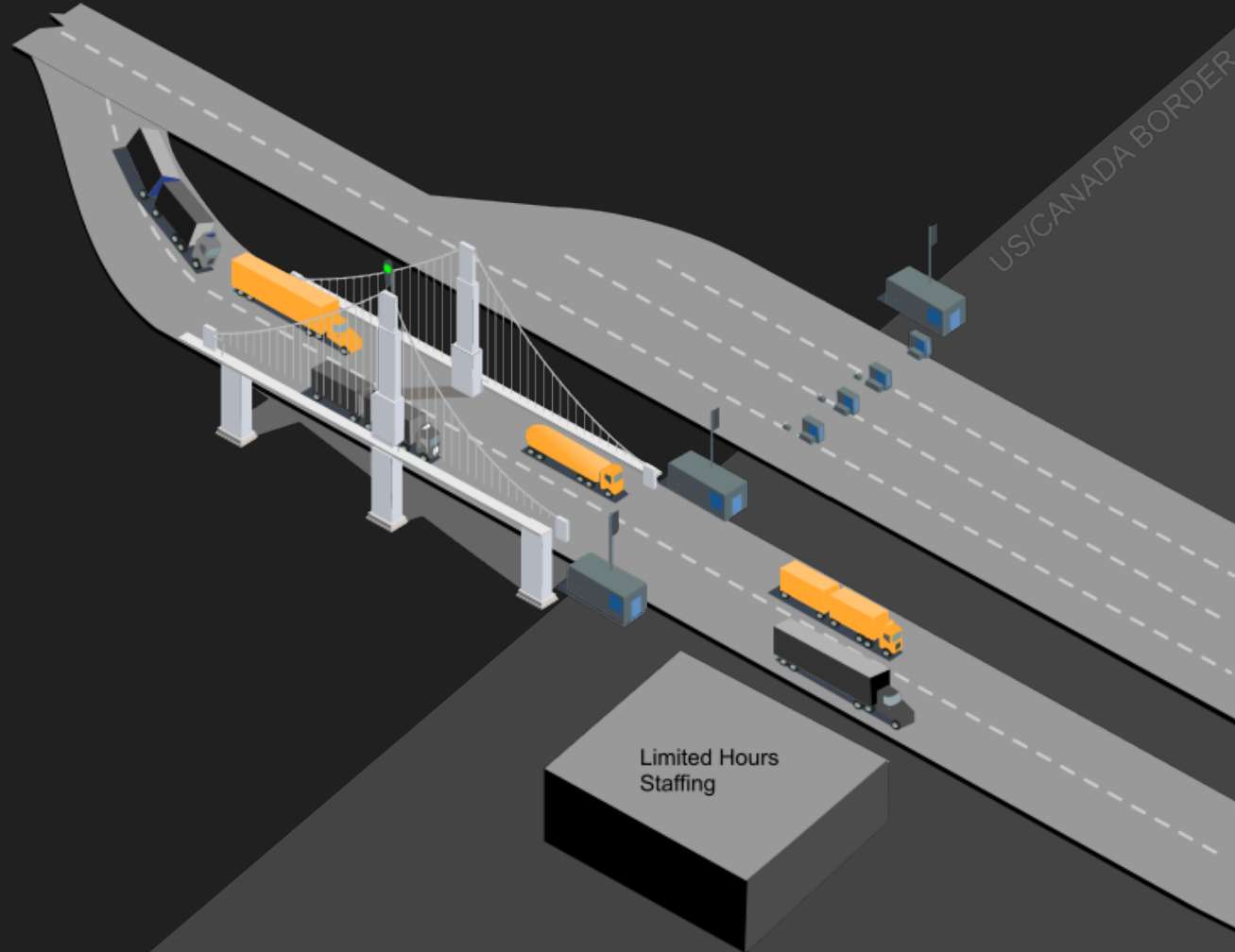


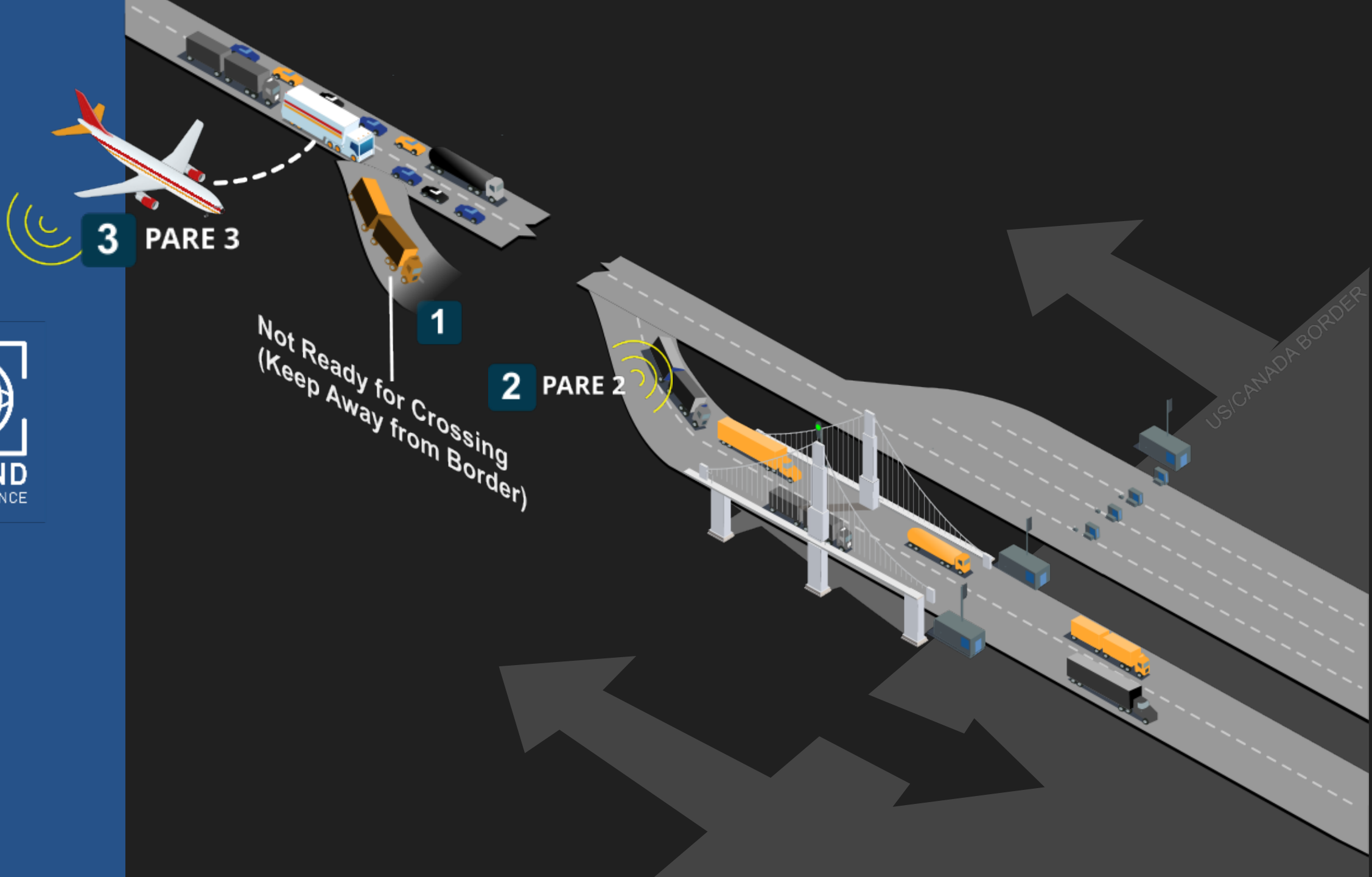
Today:
Biometric
Implementation



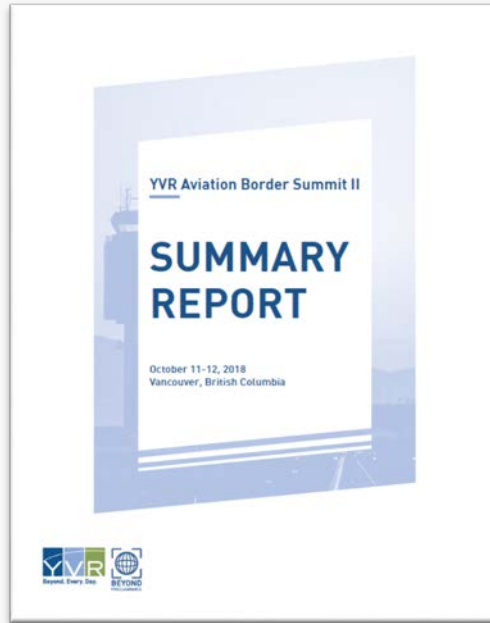


Mixed Flows of Vehicles





Border Summits October 2018/April 2019



- Organized by YVR, Beyond Preclearance Coalition: Aviation Summit II
- Keynote Speakers, Panels & Break Out Groups
- Agreement on Working Groups



12 Working Groups: Key Pilot Project Areas

- Facial biometric pilot expansion + identity management
- ESTA/eTA Single Window
- Research to support policy + applied research
- Remote screening of goods & facilities co-location
- Trusted Traveller program integration
- Security rescreening elimination
- Short-term policy & process changes
- Intermodal transfer (passengers/baggage)
- Preclearance facilities of the future/Flexible Facilitation Model
- Regulatory alignment (input to RCCC)
- Agricultural exams away from the border
- Communications



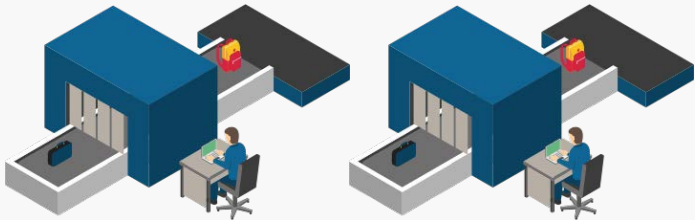
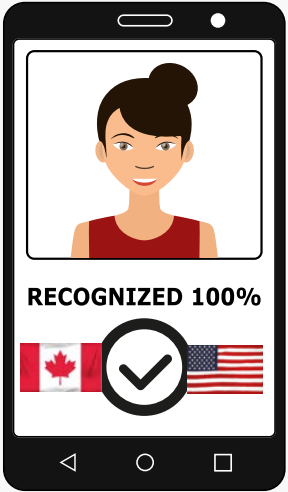
Key Areas

1. Adopt a Remote Clearance Approach



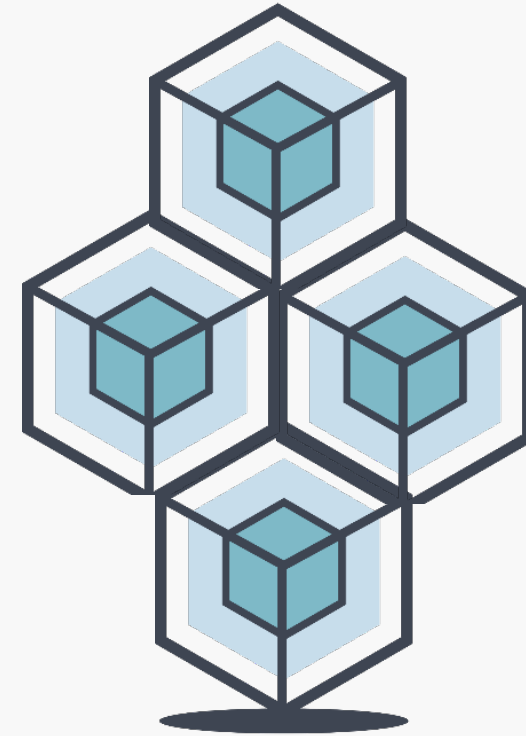
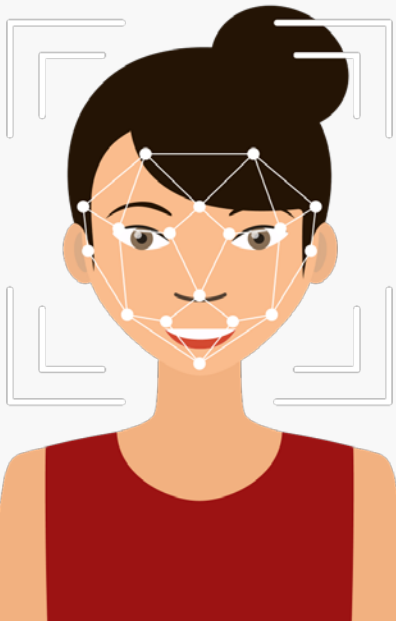
Key Areas

2. Screen Once, Accept Multiple Times



Key Directions

3. Trusted Secure Token



Key Directions

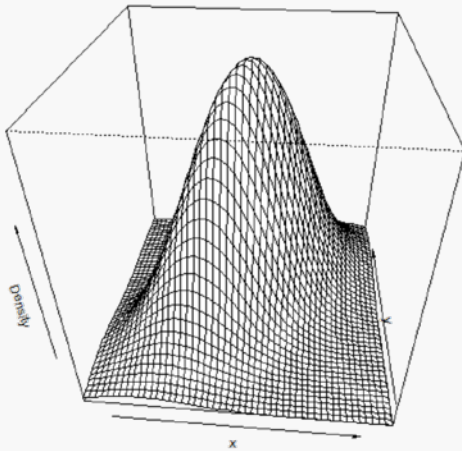
4. Move Away from Fixed Checkpoints to Clearing Flows



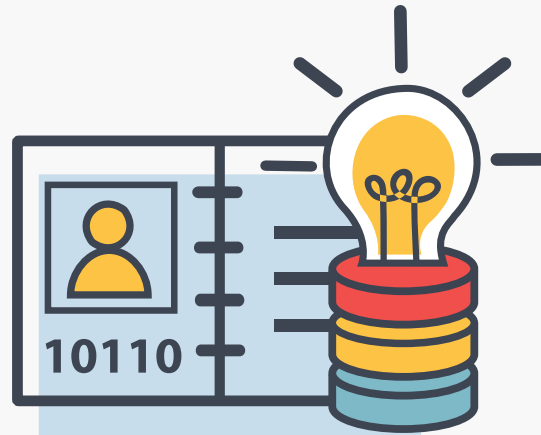
**Facial Recognition Pilot
Under Way at Peace Bridge**

Key Directions

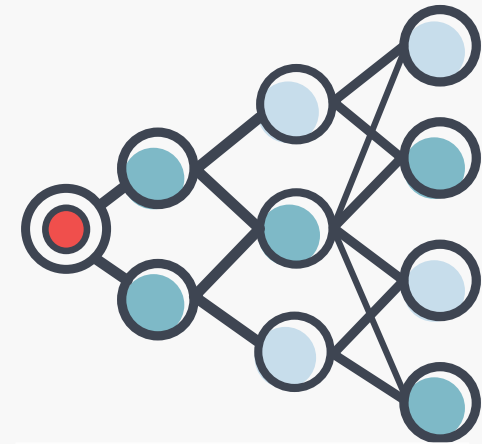
5. Harness Big Data for Risk Management



Travel History
Trade History



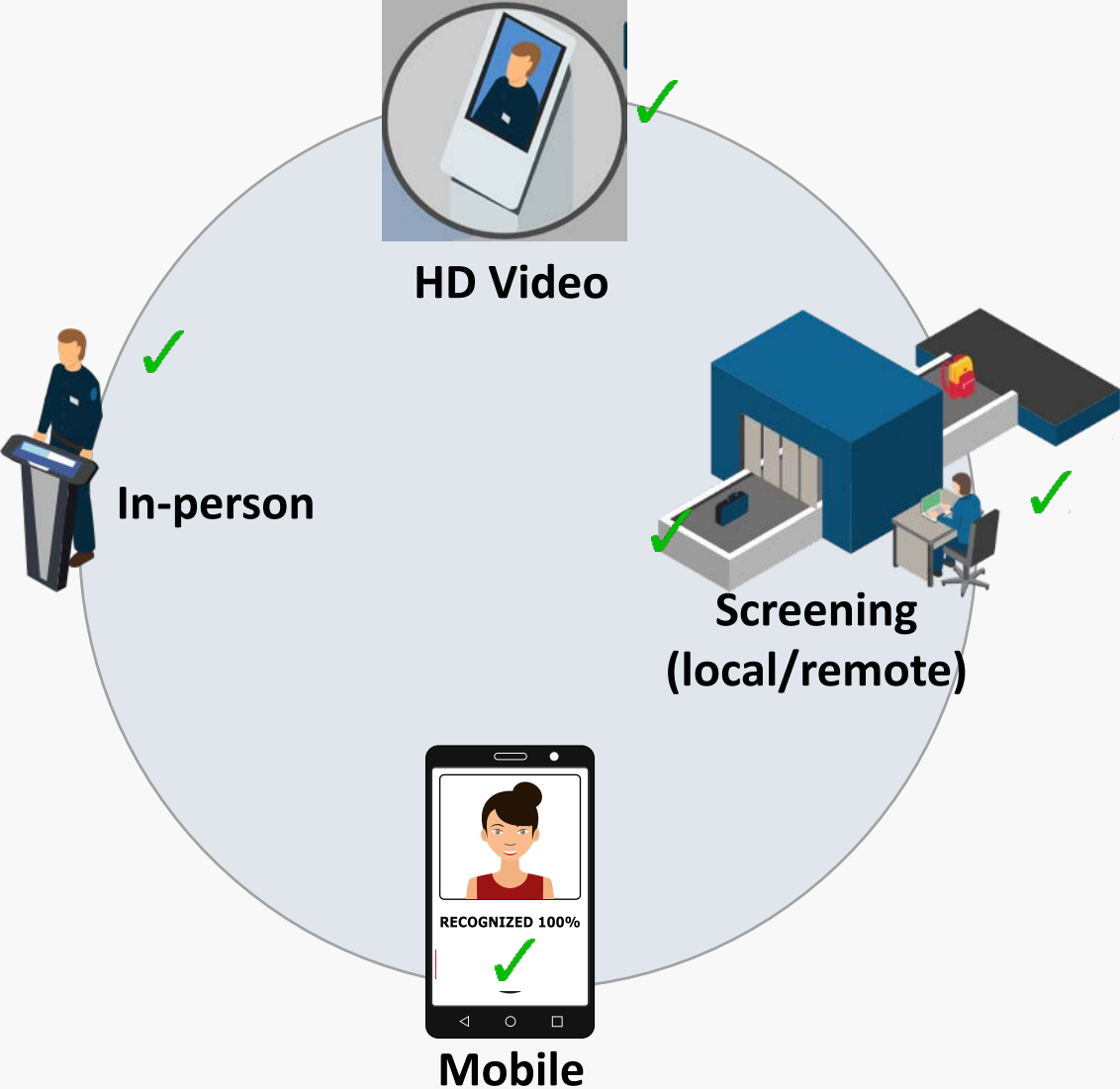
Better Risk
Management



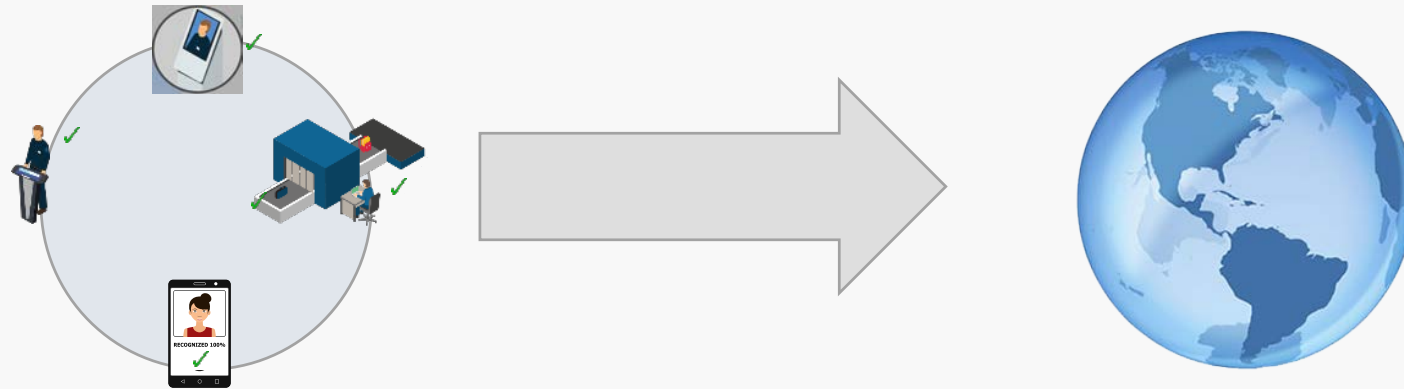
Precleared Low Risk



Multi-Channel Preclearance



Preclearance for More Than One Country or Transportation Mode



**Different Methods
to Clear**
(tied to biometrics)

**Clearance to One Country
OR
Clearance to Multiple Countries**



INFORMATION/COALITION CONTACTS:

MATT MORRISON

Pacific Northwest Economic Region

T: 206.443.7723

E: Matt.Morrison@pnwer.org

GERRY BRUNO

Vancouver Airport Authority

T: 604.762.1444

E: Gerry_Bruno@yvr.ca

SOLOMON WONG

InterVISTAS Consulting Inc.

T: 604.808.0107; 202.709.4638

E: Solomon.Wong@intervistas.com

BRANDEN HARDENBROOK

Pacific Northwest Economic Region

T: 206.443.7723

E: brandon@pnwer.org

ALANA LAWRENCE

Vancouver Airport Authority

T: 604.276.7752

E: Alana_Lawrence@yvr.ca

JIM PHILLIPS

Can/Am Border Trade Alliance

T: 716.754.8824

E: canambta@aol.com

Download White Paper/Summit Report:

<https://www.beyondpreclearance.org>

