



pour un avenir durable

NOISE BARRIER – YUL AIRPORT



ACI-NA Airports@Work
Salt Lake City, Utah
April 3, 2019

AÉROPORTS DE
MONTREAL

AÉROPORTS DE MONTRÉAL

- ☐ ADM is a private, not-for-profit corporation without share capital
- ☐ Created in 1992 as part of the Airport Transfer Program with the mandate to manage, operate and develop Montreal's international airports
- ☐ Under a long-term lease with Transport Canada extending from 1992 to 2072.
- ☐ 2 sites : YUL and YMX

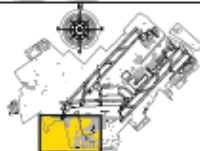
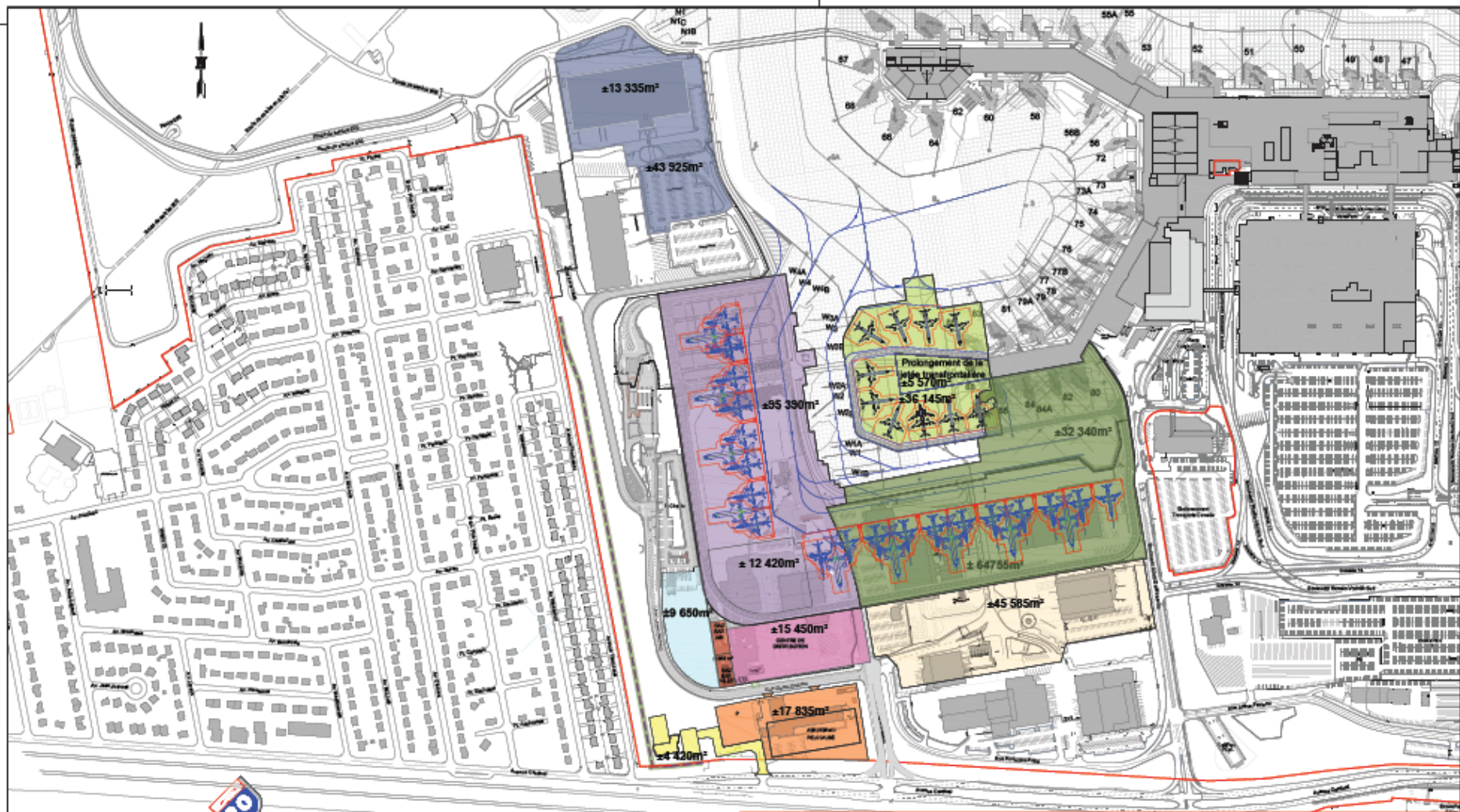
MISSION

- ☐ Provide quality airport services that are safe, secure, efficient and consistent with the specific needs of the community.
- ☐ Foster economic development in the Greater Montréal Area,
- ☐ Co-exist in harmony with the surrounding environment

YUL

- ❑ Initially opened in 1941
- ❑ Located on the island of Montréal, Canada
- ❑ Exclusivity over the Montreal region, Canada's 2nd largest metropolitan area with a population of 3.9 million
- ❑ Third airport in Canada
- ❑ Passenger Traffic:
 - ❑ 19.4 million passengers in 2018
 - ❑ More than 37 carriers and 150 scheduled and seasonal destinations
- ❑ Infrastructure / Facilities:
 - ❑ Runway capacity beyond 2072
 - ❑ World-class terminal: expanded and modernized
 - ❑ 1 terminal; 2 main runways

YUL'S DEVELOPMENT PLAN



PRÉLIMINAIRE

N.B. : Le ou les plans ne sont fournis par ADM qu'à titre indicatif seulement. ADM ne peut garantir leur exactitude de sorte que le destinataire doit les utiliser avec réserve, il lui incombe d'en vérifier le contenu et d'effectuer les relevés supplémentaires appropriés.

MONTRÉAL
TRUDEAU

Titre de dessin
Développement du tablier Sud-Ouest et du lot 7
Aménagement 2016-2030

Conçu par S. Talbot, E. Maréchal, D. Frenette, F. Chevalier, ing.	Dessiné par O. Louis-Jacques/ O. Rioux	Projet no.
Vérifié par S. Talbot, E. Maréchal, D. Frenette, F. Chevalier, ing.	Date 22 août 2016	Nombre de plan Y503N0745

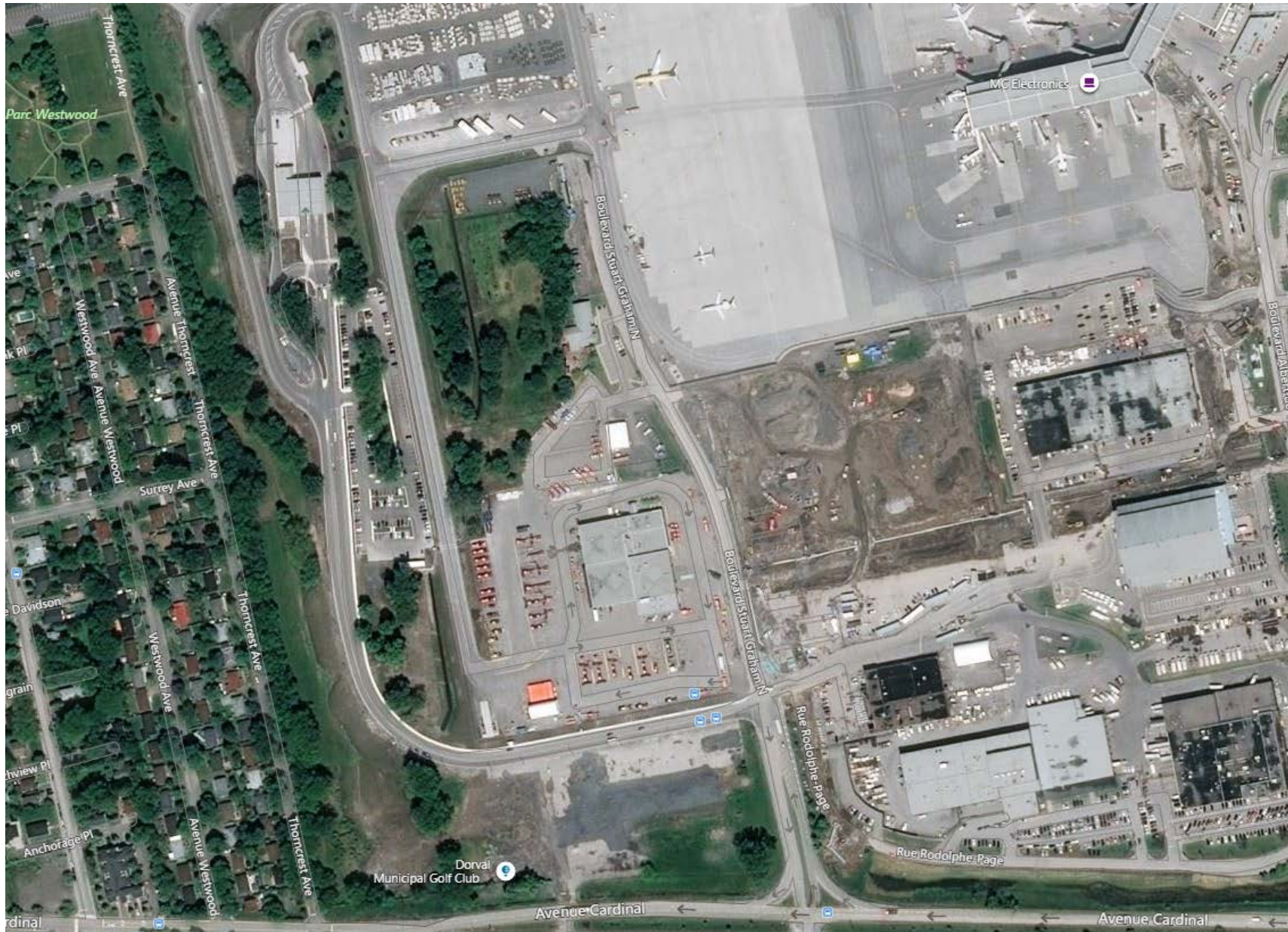
Not to scale

Non à l'échelle

BEFORE...



AFTER...



DEVELOPMENT OF LOT 7

- ☐ Lot 7 was required for security purpose in order to meet Transport Canada's obligations for the establishment of checkpoints where vehicles enter restricted areas at Canadian airports (non-passenger screening vehicles, or NPSV)
- ☐ ADM implemented mitigation measures as part of the development of lot 7:
 - ☐ Preservation of a 25-metre wooded strip of land in the residential sector of Thorncrest Ave.
 - ☐ Urban furniture made from trees in partnership with NPO Groupe Info Travail.

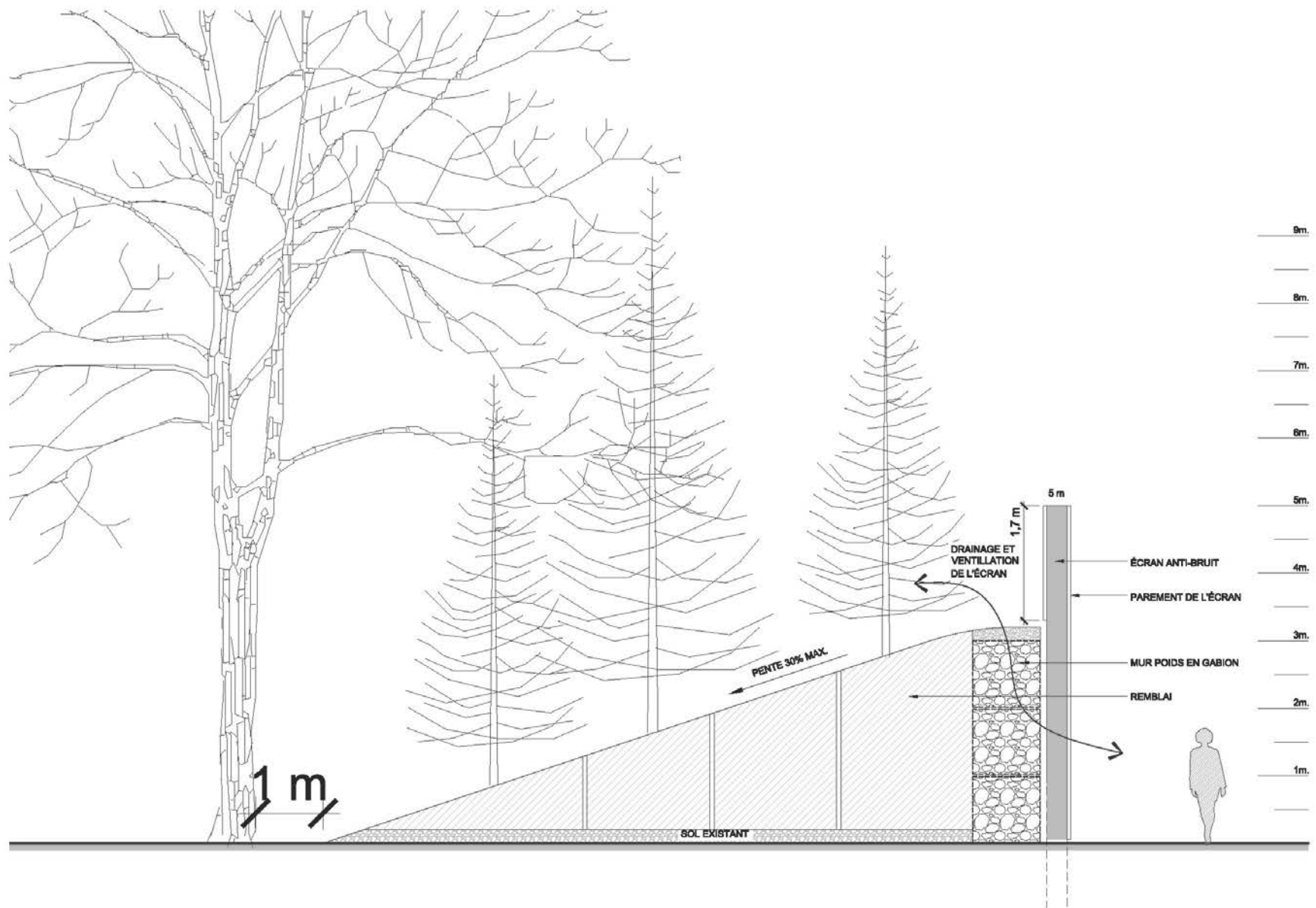
DEVELOPMENT OF LOT 7 - PROTECTION OF TREES

- ❑ To protect the trees and minimize tree cutting:
 - ❑ ADM took an inventory and assessed the ecological value of the trees
 - ❑ Plan developed to minimize tree cutting and to protect trees with the highest ecological value
 - ❑ Underground services located in a way to protect tree roots
 - ❑ Adjustment of positioning of the Hydro-Québec line
 - ❑ Construction of elevated roads and parking

NOISE BARRIER - ANALYSIS OF NOISE IMPACTS

- ☐ This development of the west sector of the airport site may lead to an increase in noise levels
- ☐ To determine the characteristics of the noise barrier, noise levels were measured at the airport site and in the residential area to establish the current scenario
 - ☐ Increased noise levels expected until 2040

NOISE BARRIER



GREEN SCREEN

- ❑ Proposed mitigation measure: 5m (16 feet) high noise barrier insulated with rock wool and cover by plaited willow covering, built on a mound of earth.
- ❑ Made from 100% recyclable materials
- ❑ 850 m (2,789 feet) length



NOISE BARRIER - AFTER TREE PLANTING



LANDSCAPING

- ☐ The project included landscaping and the planting of 500 trees.
- ☐ The choice of plants is restricted at the airport site because of bird hazard.
- ☐ The recommendation was 70% deciduous trees and 30% conifers.
- ☐ Citizens were consulted for the choice of plants for landscaping.

CITIZEN CONSULTATION

FOR YOUR INFORMATION

Installation of a noise barrier on lot 7

Landscaping consultation

AÉROPORTS DE
MONTREAL
admtl.com

pour un avenir durable

CONTRIBUEZ AU VERDISSEMENT CONTRIBUTING TO THE GREENING

Le projet inclut également un aménagement paysager et la plantation de 400 arbres.

Le choix des végétaux est restreint sur le site aéroportuaire en raison du péril aviaire. Cependant, nous vous invitons à nous indiquer votre préférence pour le choix des végétaux dans l'aménagement paysager. L'architecte paysager intégrera vos choix dans l'aménagement. La recommandation est une proportion de 70 % d'arbres feuillus et pour 30 % de conifères.

Veuillez nous indiquer vos préférences parmi les choix suivants (cocher vos choix).

The project also includes landscaping and the planting of 400 trees.

The choice of plant species is restricted on the airport site due to the bird hazard. However, we invite you to inform us of your preferences with regard to landscaping plant material choices. The landscape architect will integrate your choices into the landscaping. The recommendation is a proportion of 70% deciduous trees and 30% conifer trees.

Please select your choices from the following list:



**Arbres
feuillus**
Deciduous Trees



☐ Érable rouge «Armstrong»
Red Maple



☐ Érable à sucre «Green Mountain»
Sugar Maple



☐ Tilleul d'Amérique
«Redmond»
American Basswood



☐ Orme «Pioneer»
Pioneer® Hybrid Elm



**Conifères
Conifers**



☐ Épinette blanche
White Spruce



☐ Pin blanc
White Pine



☐ Thuya de l'Est
White Cedar



**Arbustes
feuillus**
Deciduous Shrubs



☐ Cournoulier stolonifère «Kelsey»
"Kelsey" Dwarf Red Osier Dogwood



☐ Dièreville chèvrefeuille «Copper»
"Copper" Low Bush Honeysuckle



☐ Physocarpus à feuilles
d'obier «Coppertina»
"Coppertina" Common Ninebark



**Graminées, vivaces
et plantes grimpantes**
Grass Family, Perennials, Vines



☐ Hémerocalle «Franz Hall»
Daylily



☐ Panic raide «Shenandoah»
Switchgrass



☐ Vigne de Boston
Boston Ivy

Veuillez retourner d'ici le 7 avril vos choix par courrier avec l'enveloppe ci-jointe, par courriel (info@admtl.com) ou en ligne : <http://www.admtl.com/fr/adm/collectivites/lot7>
Please return by April 7 your choices by mail with the attached envelope, by e-mail (info@admtl.com) or on line: <http://www.admtl.com/en/adm/communities/lot7>

COMMUNICATION TOOLS AND ACTIVITIES

- ☐ Newsletters distributed directly to citizens' homes
- ☐ Dedicated email address for this project
- ☐ Consultation for the choice of plants
- ☐ BBQ with the community
- ☐ Support of the Mayor and the Councillor







NEWSLETTERS

Information on the noise barrier

OCTOBER 19, 2018

We'd like to thank you for attending the September 27 barbecue. We were very pleased to meet you!

Because several people had questions on the noise barrier design, following is some technical information about it:

- The noise barrier technology was developed by Salix Factory (Les Écrans Verts).
- Unlike concrete walls, which can actually amplify noise on the opposite side of the barrier due to noise reflection, Salix Factory's acoustic fencing absorbs the noise without reflecting sound.
- The barrier is 5 metres high for its entire 850-metre length. In order to determine the noise barrier's features, we established noise-level forecasts until the year 2030. This assessment of the increase in noise levels related to airport development was conducted using modelling software based on Health Canada's sound-impact evaluation methodology.
- The wall is insulated with Rockdelta rock wool, which serves as soundproofing and is especially designed for outdoor conditions.
- Rock wool offers incomparable acoustical properties, with its density of 25 kg/m².

For more information:

<http://salixfactory.com/noise-barriers/>.



CONCLUSION

- ❑ The development of lot 7 was essential to the growth of Montréal-Trudeau.
- ❑ Some residents and environmental groups were opposed to the development of this «*green*» area.
- ❑ ADM has carried out this project in compliance with the principles of sustainable development.
- ❑ Consultation (and communication) with the community was key to the success of this project.



