



# Airport Biometric Exit Pilots ACI-NA BIT SLC

Jeff Williams  
Business Relationships and Innovations  
Metropolitan Washington Airports Authority



# A *different approach* to Biometric Compliance

## Foundational Changes

- Insource Thought Leadership
- Cloud First
- Internal First Mover Advantage
- And...







**Use Our Airports As Labs**



# MWAA Labs

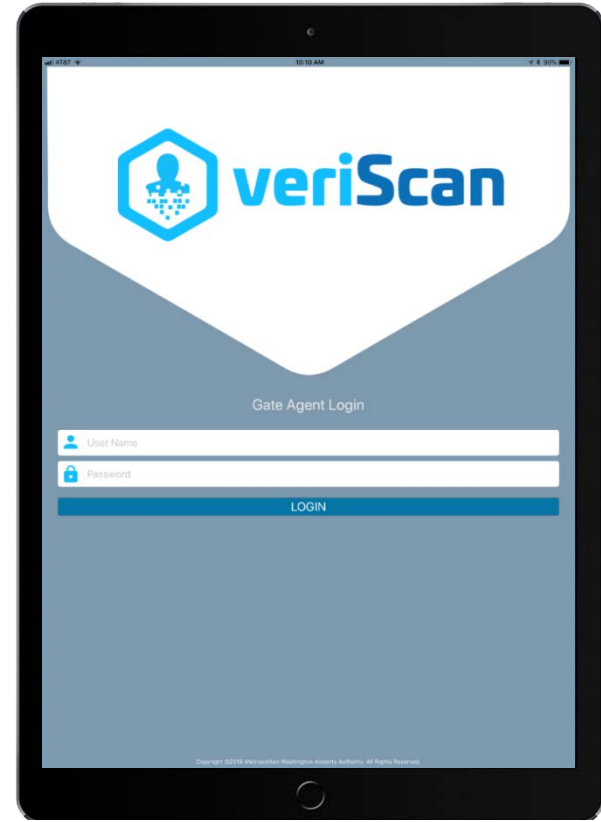
Born out of necessity for innovative, cost effective **technology solutions** for our airports

- Airport Directory
- Maintenance Inspection App
- Ticket Counter Display System
- FAR 139 App
- Dual-Screen Information Desk Kiosks
- Mobile Lounge Dispatch
- **veriScan**



# veriScan

- Built on Apple Vision Framework, Amazon Web Services, and Google Firebase
- Fast, secure, cost effective
- Non-disruptive, versatile, and frictionless



# Biometric Exit Challenges

# Challenges: Cost

## Biometric Technology

- Hardware
- E-Gates

## Infrastructure

- Power Installs
- Cabling
- Conduit
- Core Drilling





# Challenges: Different Gate Configurations



IAD Concourse A



IAD Concourse C

# Challenges: Unique Airline Operations



IAD: Air France  
Airbus 380



DFW: Japan Airlines  
Boeing 777



JFK: JetBlue  
Airbus 321

# Successes with veriScan



# Biometrics at Entry



# 27

Airlines

# 76,979

Passengers

# 523

Flights

# 98.5%

Successful  
Match Rate

## Airports



DFW



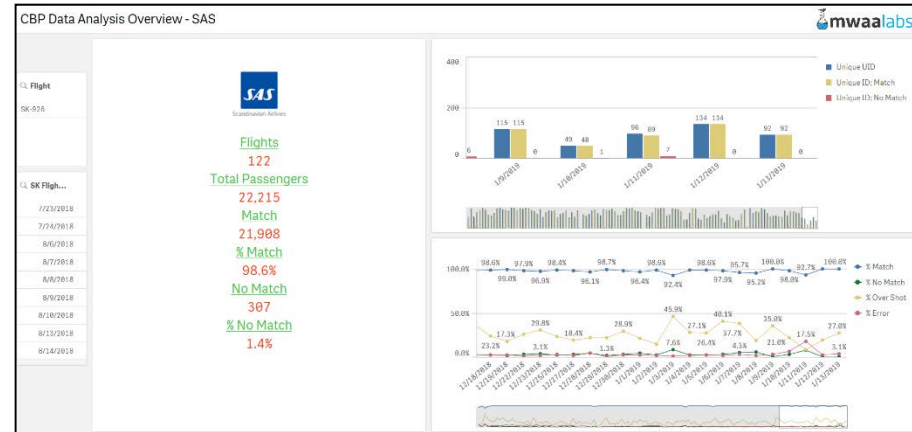
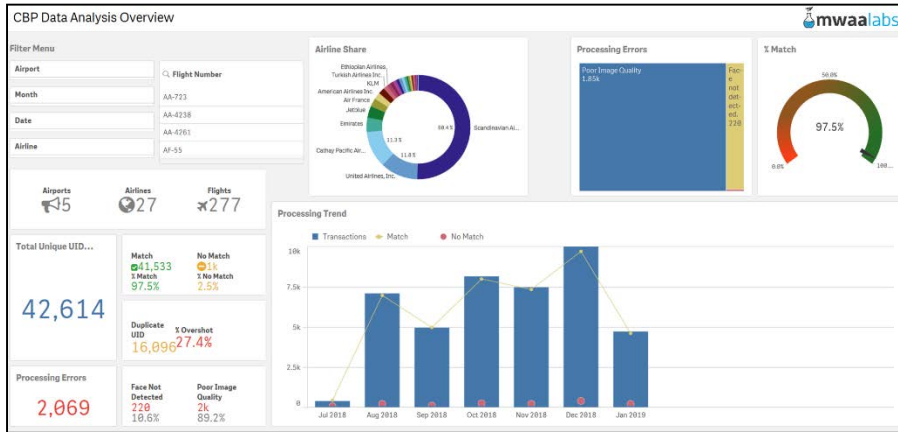
## Airline Partners



الخطوط الملكية المغربية  
royal air maroc



# Helping Improve Airline & Airport Efficiency



# Airline DCS Integration



It was an honor just to be nominated...



2019 South by Southwest  
Conference and Festival

Interactive Innovation Awards  
Speculative Design: *Finalist*



# Building Upon Our Community



# veriScan Future Strategy

# veriScan Passenger Journey





Jeff Williams  
Business Relationships  
Office of Technology

