

10/8/2018

# TECTONIC DML

Distributed  
Mode  
Loudspeaker

---



# TECTONIC DML

- WHAT IS A DML
- COVERAGE
- FREQUENCY RESPONSE
- POWER HANDLING AND SENSITIVITY



# Distributed Mode Loudspeaker

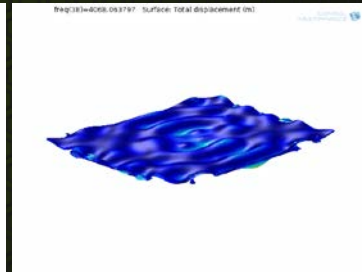
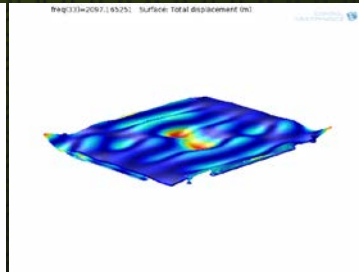
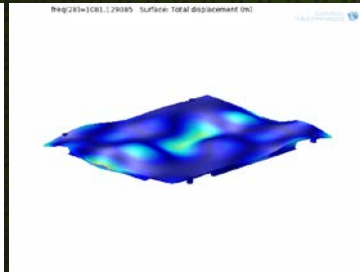
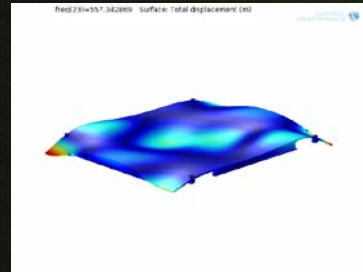
## Panel Simulation

557Hz

1081Hz

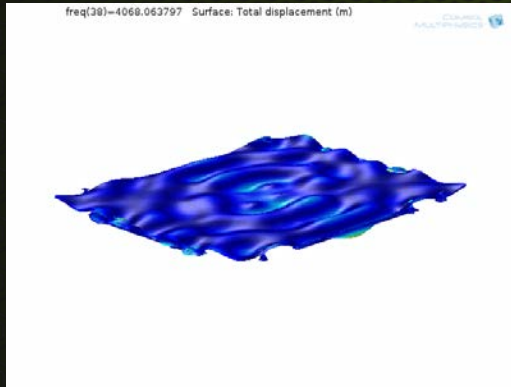
2097Hz

4068Hz



# DML VS CONVENTIONAL

DML



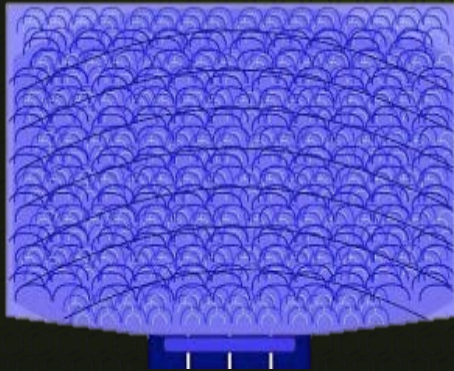
Piston



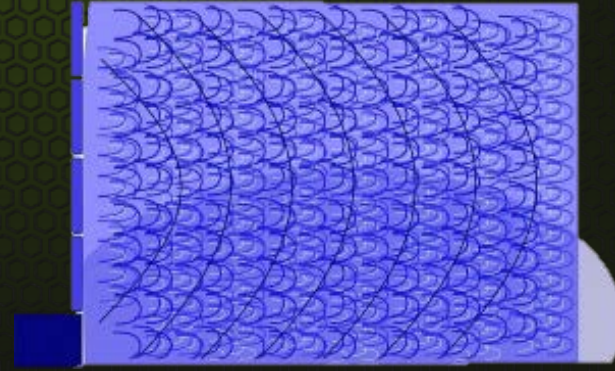
# Distributed Mode Loudspeaker

Propagation of acoustic energy

Horizontal

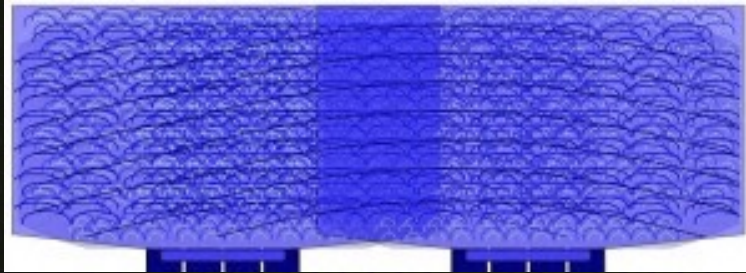


Vertical



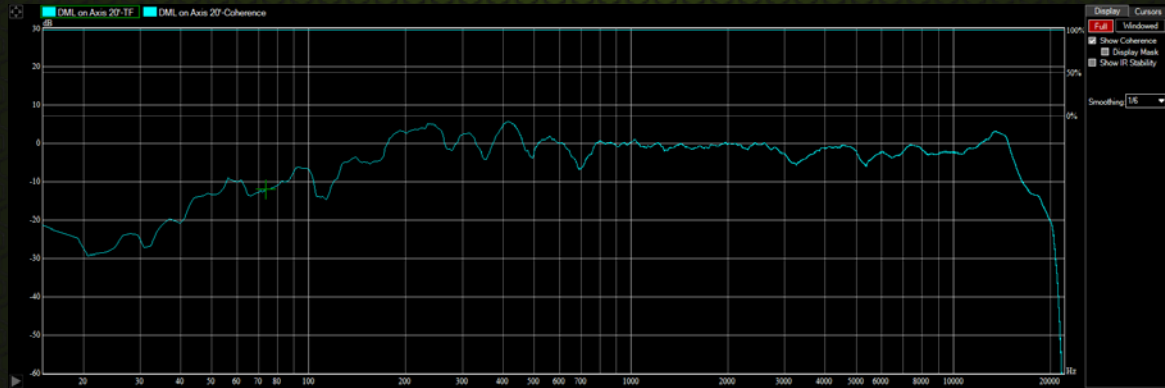
# DML COVERAGE

- 165° IN ALL DIRECTIONS



# FREQUENCY RESPONSE

- 120HZ – 16KHZ



# DML POWER HANDLING

- 300W AES LONG TERM 100HRS (6DB CREST FACTOR BANDWIDTH LIMITED)
- 600W PROGRAM
- RECOMMENDED AMP 800W PROGRAM  
1200W PEAK @ 8 OHM





# DISCUSSION POINTS

- DIFFUSE OUTPUT
- RESONANT MODE NOT RESONATING
- ARE ECHOS IMPOSSIBLE WITH A DML
- MODELING SOFTWARE



