

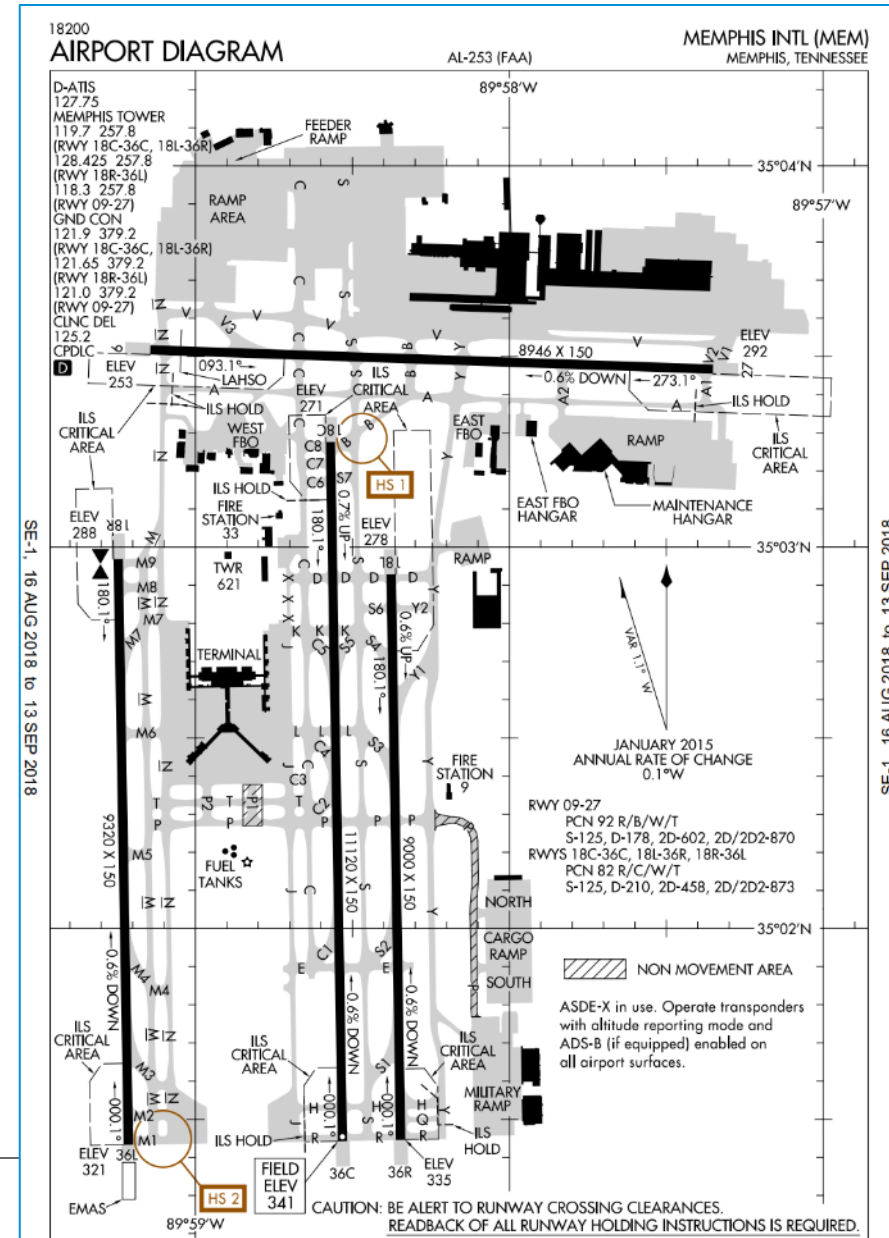


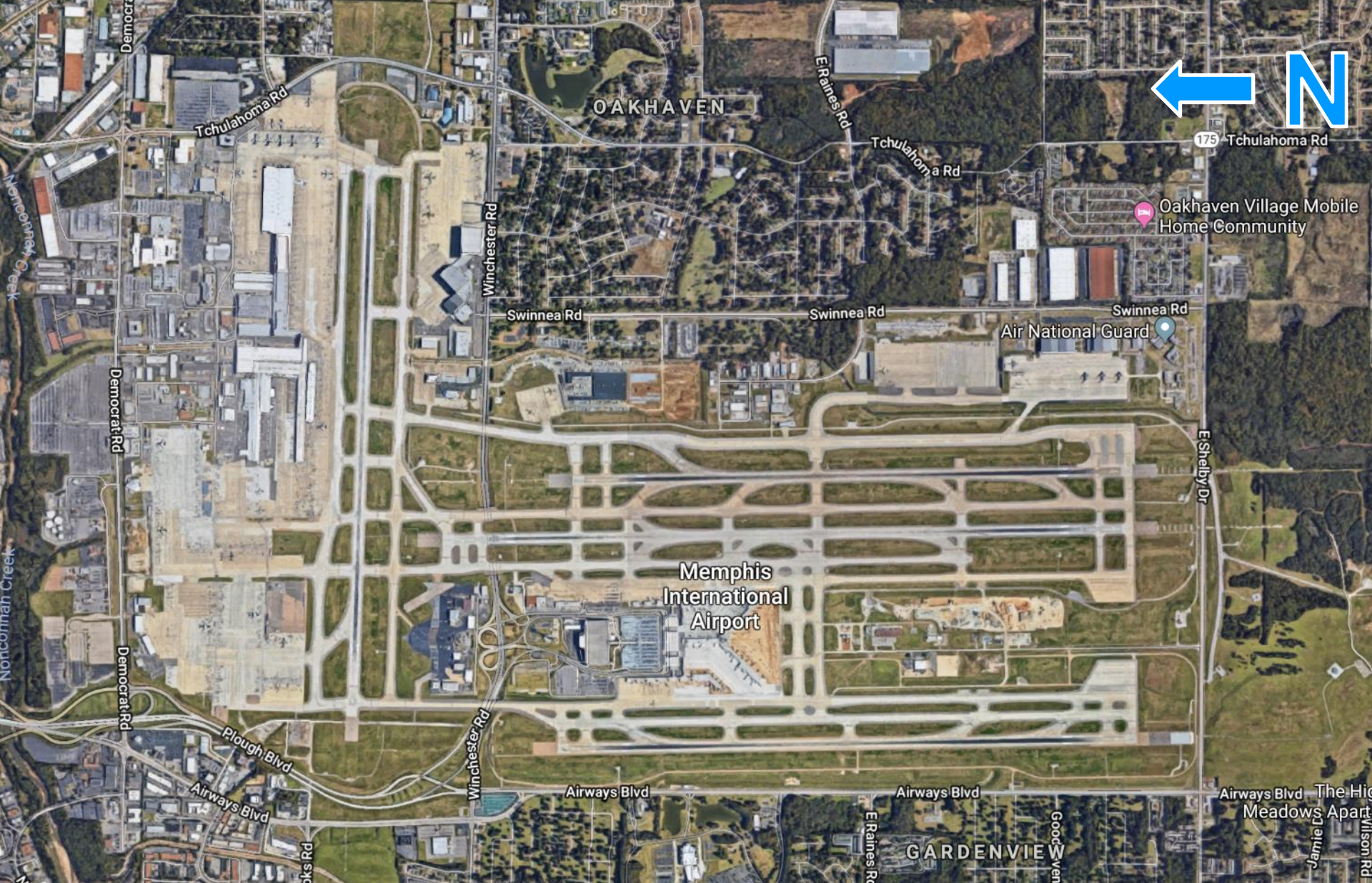
2018 ACI-NA Annual Conference

Visual NOTAMS

MEM Airport Profile

- **FAA Class 1, Small Hub**
- **4.2M Total Passengers**
- **4.3M Metric Tons Cargo**
 - **World #2 (HKG)**
- **222,427 Annual Operations**
- **Typical Aircraft Mix:**
 - **Airline: RJ's, A-320, B-737, MD-88**
 - **Cargo: B-757/67/77, MD-10/11**





Visual NOTAMs



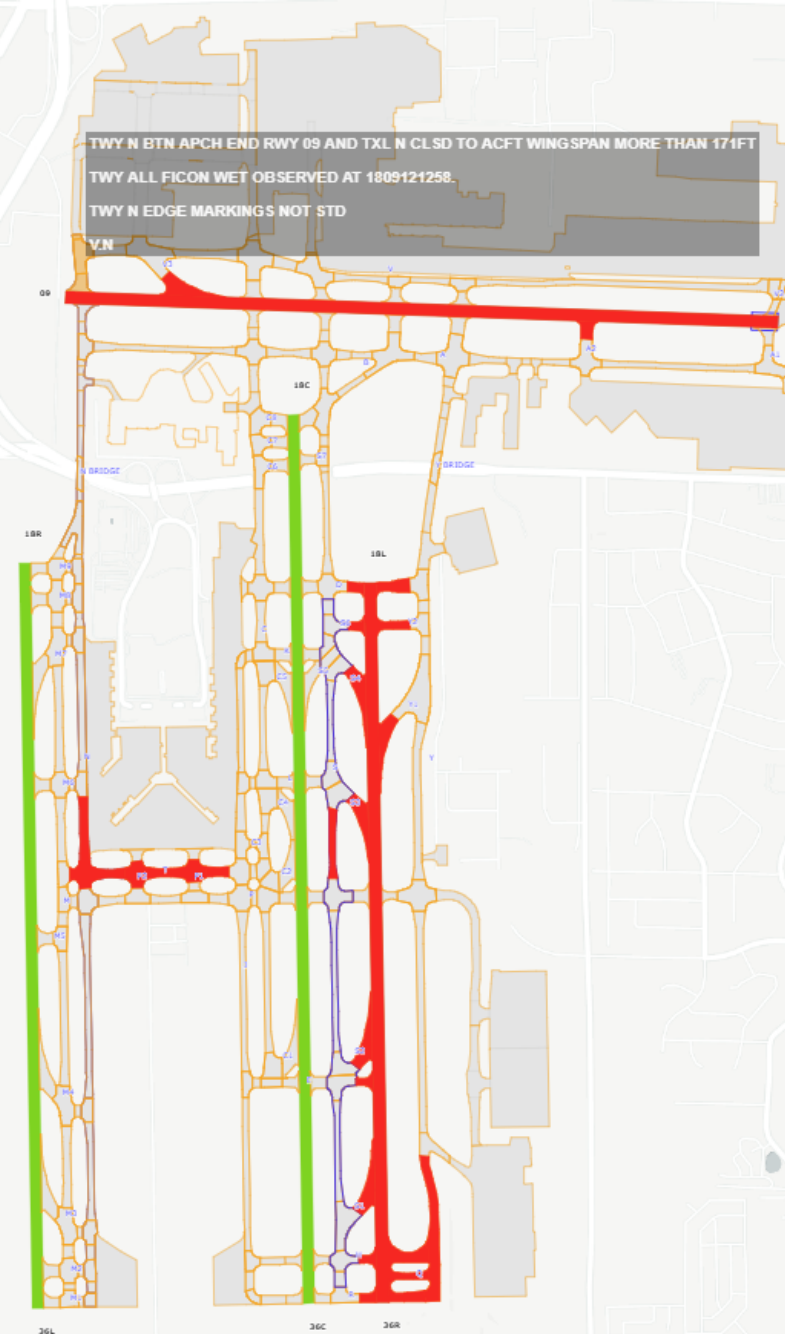
Visual NOTAMs

- MEM Operations was searching for a way to better visualize and track surface status during periods of construction and/or winter operations
- Research identified potential vendors
- Quotes sought for:
 - Hosted web-based system designed to display NOTAM and FICON information from the FNS visually in map format in near real-time.
 - Preferable that Ops be allowed to correct potential inaccuracies
 - KMEM allowed to publicly share a web-link of the system for multiple users

Typical Day

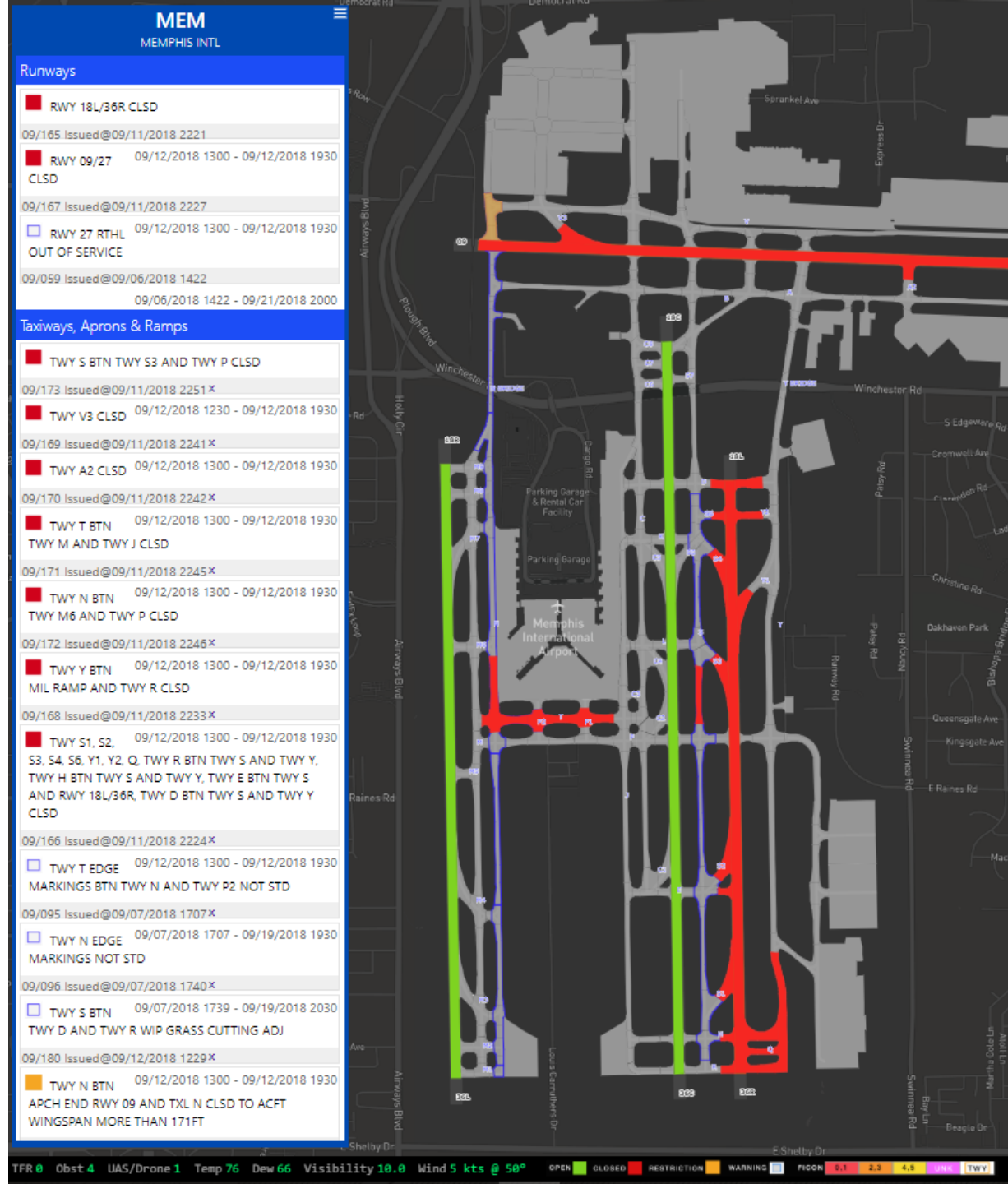
- Open Runways green
- FICONS yellow
- Closures in red
- Restrictions in orange
 - (i.e. – wingspan restrictions)
- FICONS outlined
 - Blue on runways
 - Orange on taxiways/aprons
- Work in Progress and non-standard NOTAMs
 - Blue outline

MEM MEMPHIS INTL	
Runways	
■ RWY 18L/36R CLSD	
09/165 Issued@09/11/2018 2221	
■ RWY 09/27	09/12/2018 1300 - 09/12/2018 1930
CLSD	
09/167 Issued@09/11/2018 2227	
□ RWY 27 RTHL	09/12/2018 1300 - 09/12/2018 1930
OUT OF SERVICE	
09/059 Issued@09/06/2018 1422	
	09/06/2018 1422 - 09/21/2018 2000
Taxiways, Aprons & Ramps	
■ TWY S BTN TWY S3 AND TWY P CLSD	
09/173 Issued@09/11/2018 2251X	
■ TWY V3 CLSD	09/12/2018 1230 - 09/12/2018 1930
09/169 Issued@09/11/2018 2241X	
■ TWY A2 CLSD	09/12/2018 1300 - 09/12/2018 1930
09/170 Issued@09/11/2018 2242X	
■ TWY T BTN	09/12/2018 1300 - 09/12/2018 1930
TWY M AND TWY J CLSD	
09/171 Issued@09/11/2018 2245X	
■ TWY N BTN	09/12/2018 1300 - 09/12/2018 1930
TWY M6 AND TWY P CLSD	
09/172 Issued@09/11/2018 2246X	
■ TWY S1, S2,	09/12/2018 1300 - 09/12/2018 1930
S3, S4, S6, Y1, Y2, Q, TWY R BTN TWY S AND TWY Y,	
TWY H BTN TWY S AND TWY Y, TWY E BTN TWY S	
AND RWY 18L/36R, TWY D BTN TWY S AND TWY Y	
CLSD	
09/166 Issued@09/11/2018 2224X	
■ TWY Y BTN	09/12/2018 1300 - 09/12/2018 1930
MIL RAMP AND TWY R CLSD	
09/168 Issued@09/11/2018 2233X	
□ TWY T EDGE	09/12/2018 1300 - 09/12/2018 1930
MARKINGS BTN TWY N AND TWY P2 NOT STD	
09/095 Issued@09/07/2018 1707X	
□ TWY N EDGE	09/07/2018 1707 - 09/19/2018 1930
MARKINGS NOT STD	
09/096 Issued@09/07/2018 1740X	
□ APRON ALL	09/07/2018 1739 - 09/19/2018 2030
FICON WET OBSERVED AT 1809121257.	
09/183 Issued@09/12/2018 1258X	
□ TWY ALL	09/12/2018 1257 - 09/13/2018 1257
FICON WET OBSERVED AT 1809121258.	
09/184 Issued@09/12/2018 1258X	



Key Features


- Displays all MEM Notams in the FNS
- 1-3 day look ahead
- Multiple layers include aerial map, streets, nighttime mode (dark)
- UTC date/time feature in lower right hand corner.
- Hover over and highlight ability



Benefits

- Visual depiction of airport's NOTAM status (real-time).
- Ability to visualize multiple NOTAMs (especially helpful in winter ops).
- System allows users to correct any errors. Ops can “teach” the system. No waiting on Tech Support.
- Test site allows Ops to determine impacts/feasibility of future closures.
- Public website that allows all tenants to view NOTAM status

Link available at: flymemphis.com



FLIGHTS PARKING & TRANSPORTATION PASSENGER GUIDE ABOUT MEM CONNECT



[Fitch Bond Rating August 2016](#)

[Moody's Investors Service Bond Rating March 2017](#)

[Standard and Poor's Bond Rating March 2017](#)

Visual NOTAMs

Other Reports and Notices

[FAA Environmental Assessment Report 12-2017](#)

[FedEx EA FAA/DOT Public Notice 12-2017](#)

AOA Driving References

[AOA SMGCS Study Guide](#)

[AOA Class 2 Study Guide](#)

[AOA Class 3 Study Guide](#)

[ID Badge Application](#)

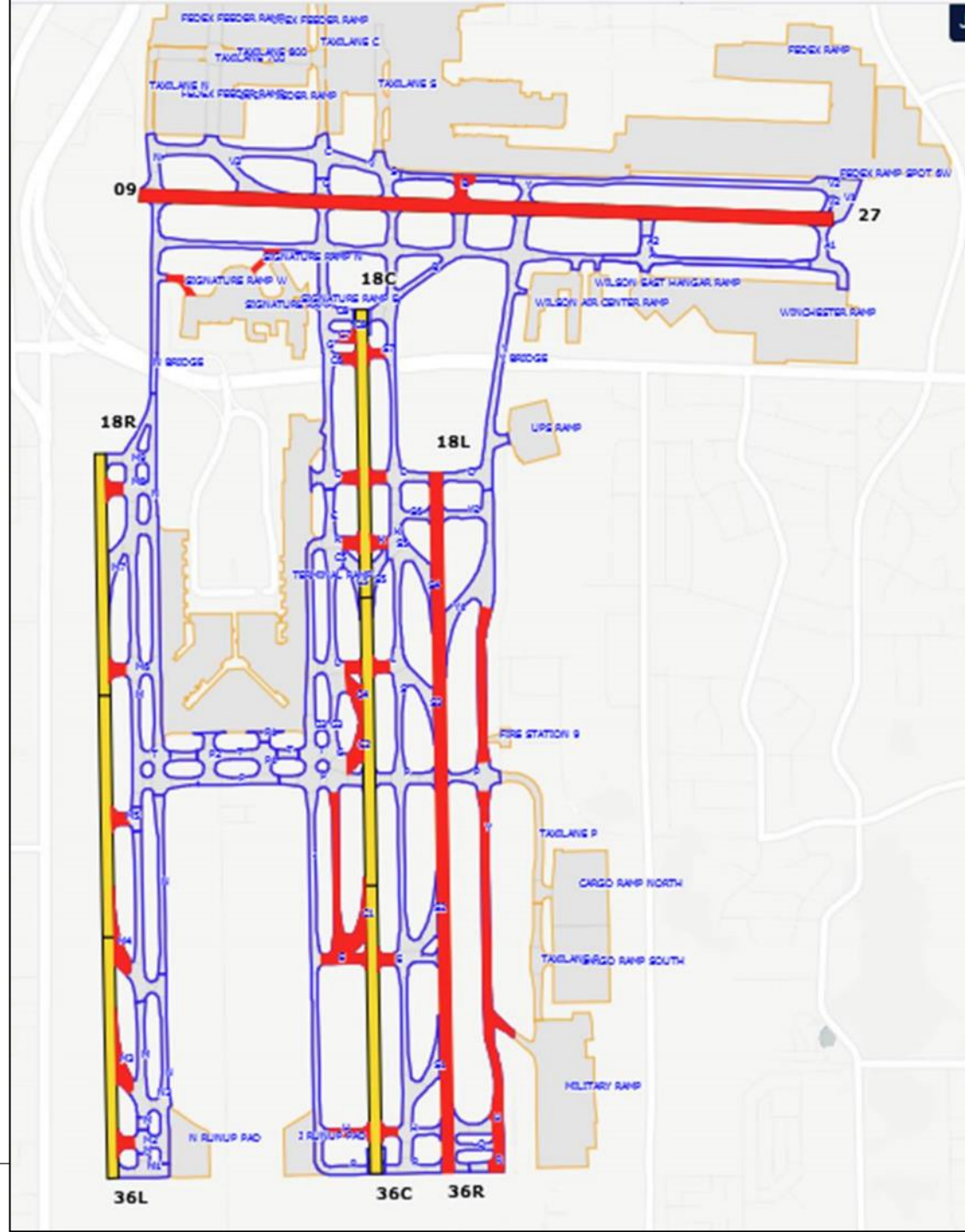
GET INFO ON NEW FLIGHTS AT MEM. SUBSCRIBE NOW.



Winter Storm January 2018

- ☐ !MEM 01/180 (KMEM A0300/18) MEM RWY 36C FICON 5/5/5 100 PRCT WET DEICED LIQUID OBSERVED AT 1801121811. 1801121811-1801131811
- ☐ !MEM 01/178 (KMEM A0299/18) MEM APRON SIGNATURE RAMP CLSD NORTH ENTRANCE 1801121809-1801122300
- ☐ !MEM 01/177 (KMEM A0298/18) MEM APRON SIGNATURE RAMP CLSD WEST ENTRANCE 1801121808-1801122300
- ☐ !MEM 01/176 (KMEM A0295/18) MEM RWY 36L FICON 5/5/5 100 PRCT WET DEICED LIQUID OBSERVED AT 1801121653. 1801121653-1801131653
- ☐ !MEM 01/172 (KMEM A0289/18) MEM TWY Y CLSD SOUTH OF TWY P 1801121502-1801122300
- ☐ !MEM 01/171 (KMEM A0288/18) MEM RWY 18L/36R CLSD 1801121501-1801122300
- ☐ !MEM 01/170 MEM TWY ALL SFC MARKINGS OBSC 1801121448-1801122300
- ☐ !MEM 01/168 (KMEM A0286/18) MEM TWY ALL FICON 1/4IN SLUSH OVER ICE OBSERVED AT 1801121427. 1801121427-1801131427
- ☐ !MEM 01/167 (KMEM A0283/18) MEM TWY M8, M6, M4, M5, M3, M2 CLSD 1801121419-1801122300
- ☐ !MEM 01/166 (KMEM A0284/18) MEM RWY 27 FICON 2/2/2 100 PRCT 1/4IN SLUSH OBSERVED AT 1801121414. 1801121414-1801131414
- ☐ !MEM 01/164 (KMEM A0280/18) MEM TWY C1, C2, C4, C7, C6, S7, TWY H BTN TWY J AND TWY S, TWY E BTN TWY J AND TWY S, TWY D BTN TWY C AND TWY S, TWY K BTN TWY C AND TWY S, TWY L BTN TWY C AND TWY S, TWY C BTN TWY P AND TWY E CLSD 1801121356-1801122300
- ☐ !MEM 01/162 (KMEM A0275/18) MEM TWY Y BTN TWY Y1 AND TWY P CLSD 1801121339-1801122300
- ☐ !MEM 01/157 (KMEM A0271/18) MEM NAV ILS RWY 36C CAT II/III NA 1801151300-1801152300
- ☐ !MEM 01/156 (KMEM A0270/18) MEM NAV ILS RWY 36L CAT II/III NA 1801151300-1801182300
- ☐ !MEM 01/152 (KMEM A0263/18) MEM APRON ALL FICON 1/8IN SLUSH OBSERVED AT 1801121236. 1801121236-1801131236
- ☐ !MEM 01/136 (KMEM A0232/18) MEM TWY B BTN RWY 09/27 AND TWY V CLSD 1801120730-1801132359

- **Airport
maintaining
Priority 1 surfaces
per Snow & Ice
Control Plan
(SICP)**



Tracking it all in the EOC



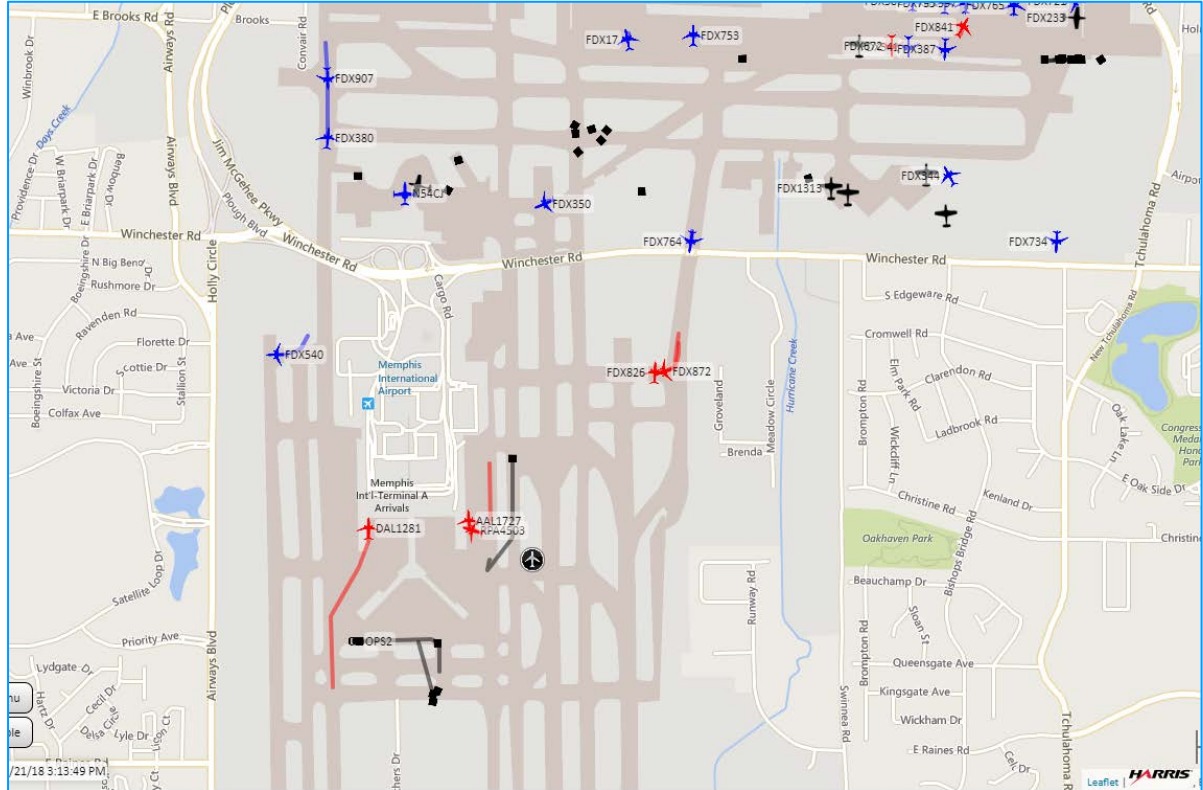
How received / the future

- FedEx ramp tower uses daily
- Weblink sent out in daily airfield closure email to all stakeholders (Maintenance, Development, Airlines, ATC, Tech Ops)
- Future ability to view NOTAM status on an earlier date
- Hoping to incorporate ADS-B tags into system.
 - Will allow users to track aircraft and vehicle movements using same system.



Looking ahead?

- Perhaps someday the complete picture: combination of surface information AND flight information?



Thank you!



Direct link

- <https://public.falconcdm.com/public/?airportuid=100f1c4e-caf1-4e26-adc7-d9d60b92be20>