

Miami-Dade Aviation Department



Rates, Fees & Charges

Finance & Strategy Group:

**Financial Planning &
Performance Analysis
Division**

FY 2014-15



**MIAMI-DADE AVIATION DEPARTMENT
RATES, FEES AND CHARGES FOR FISCAL YEAR 2015
TABLE OF CONTENTS**

1.	SUMMARY	1
	Summary of Airline Charges	2
	Airline Cost per Enplaned Passenger.....	3
	Airline Rates and Charges Methodology	4
	Residual Landing Fee.....	4
	Terminal Rentals	5
	Terminal User Fees	6
2.	AIRSIDE.....	7
	Landing Fee Calculation	8
	Aircraft Parking Fees	9
	Derelict or Non-Operating Aircraft.....	10
	New Fees for Charter Airlines	10
	VIP Ramp Escort	10
	Handling by FBO	11
	Handling by Authorized Ground Handler	11
	Ground Support Charges.....	12
	Pre-Conditioned Air Fee	12
	MDAD Loading Bridge Fee.....	12
	MDAD Stair Truck Usage Fee.....	12
	Aircraft Escort Fee	12
	Delivery Vehicles or Non-Passenger Vehicle Escort Fee	12
	Vehicle Escort for VIP Pickup at General Aviation Aircraft.....	12
	Fuel Stop Fees	12
	General Aviation Center (GAC) Facility Fee	12
	Activity Fees by Aircraft Type	12a-e
3.	TERMINAL	13
	Airline Activity Based Fees	14
	Concourse Use Fee.....	14
	Baggage Claim Fee	14
	Screening Use Fee.....	14
	International Facilities Use Fee.....	14
	Terminal Rental Rates.....	15
	Average (Class III) Terminal Rental Rates	15
	Weighted Rental Rates.....	15
	CUTE Rates (Common Use Terminal Equipment)	16
	CUTE Gate Rates	16
	Ticket Counter Usage Fee	16
	CUTE Dynamic Signage (Back-wall Display)	16
	CUTE Back-office / Operations / Educational Equipment	16
	Manual CUTE Ticket Counter Rates	16
	Miscellaneous CUTE Charges	17
	CUTE Charge Based on Departing Seat	17
	CUSS Charges (Common Use Self-Service)	17
	CCTV Charges (Closed-Circuit Television).....	17
	CUTE Rate Summary and Prior Year Comparison	18

TABLE OF CONTENTS (continued)

4.	LANDSIDE	19
	Public and Employee Parking	20
	Public Parking	20
	Standard Rates	20
	Valet Parking	20
	Parking Space Reservation	20
	Employee Parking	21
	Employee Parking Decals	21
	Motorcycle Parking Decals.....	21
	Long-Term Parking Magnetic Cards	21
	Contractor Parking	21
	Towed Vehicles.....	21
	Ground Transportation Fees	22
	Mobile Food Truck Vendor Fee.....	23
	Taxicab Operation Fee	23
	Ground Transportation Annual Permit Renewal Fee	23
	Ground Transportation Permit Late Renewal Fee.....	23
	Authority to Revise or Adjust Building Rental Rates.....	23
	Land Rental and Apron Paving Rates	24
	Building Rental Rates (Miami International Airport).....	25
	Land Zone Map (Zones 1 – 4, 7)	32
5.	FUEL FARM	33
	Fuel Flowage Fees and Calculation Explanation	34
6.	GENERAL AVIATION	35
	General Aviation Airport Fees and Charges	36
	Operational Closure Fee.....	36
	Aerial Advertising Fee	36
	Aircraft Parking at General Aviation Airports	36
	Conference Room Rental Fee (Miami Executive and Opa-Locka Airports)	36
	Off-Road Vehicle Parking Fee at Training & Transition Airport	36
	Fuel Flowage Fee at General Aviation Airports	36
	Training & Transition Approach Fee	36
	AOA (Aircraft Operating Area) Decal for Commercial Vehicles and Equipment	36
	AOA Decal for Privately Owned Vehicles and Equipment	36
	AOA Decal Replacement Fee for Vehicles and Equipment	36
	AOA Decal Late Application Fee	36, 45
	Building Rental Rates (Opa-Locka Airport - OPL)	37
	Building Rental Rates (Miami Executive Airport - TMB)	38
	Building Rental Rates (Homestead General Aviation Airport – X51).....	39

TABLE OF CONTENTS (continued)

7.	TELECOMMUNICATIONS	40
	Telecommunication Fees	41
	Wireless Service Providers	41
	Cable Television (CATV) Recovery Fee	41
	Coaxial Cable Recovery Fees	41
	Wifi Internet Access Fee	41
	Wireless Network Access Fee.....	41
	Offsite FIDS Rate.....	41
	Network Port Costs.....	41
	Equipment Rental Costs	41
	STS (Shared Tenant Services) Fees	42
8.	MISCELLANEOUS	43
	Miscellaneous Fees and Charges	44
	Opportunity Fee for Third Party Vendors	44
	Penalty Fee for Employing Unpermitted Service Vendors	44
	Miscellaneous Air Carrier Fees.....	44
	Disruptive Passenger Fee.....	44
	Ground Service Equipment (GSE) Impound Fee	44
	Aircraft Handling Chock Fee.....	44
	Employee (MDAD Tenant) ID Badge Fees	45
	Employee Identification Badge Fee.....	45
	Lost or Unaccounted Employee ID Badge Fee	45
	Failure to Notify and Return Terminated Employee ID Badge Fee	45
	TSA 5% Rule Violation Fee	45
	Fingerprinting Fee	45
	Airside Vehicle Decal, Training Decal and Decal/Permit Replacement Fees	45
	AOA Decals.....	45
	AOA Decals (Lost or Unaccounted).....	45
	AOA Driver Training	45
	AOA Movement Area Training	45
	Loading Bridge Training	45
	Decal/Permit Replacement Fee.....	45
	AOA Decal Late Application Fee.....	36, 45
	Into-Plane Fueling Recommended Fees (Non-Commercial Aircraft)	45
	Airline VIP Clubs.....	45
	Opportunity Fee	45
	Concession Fee	45
	Letter of Determination Fee (Height Restriction)	46
	Letter of Determination Fee (Land Use Zoning Analysis).....	46
	MDAD Technical Reviews and Written Comments	46
	Cell Towers and Other Structures Under 200 Feet Above Mean Sea Level	47
	Request for Written Comments	47
	Request for Written Comments – Revised Plans	47
	Development Impact Committee or Equivalent Large-Scale Hearing Application.	47
	Permissible Crane (or Equipment) Height Determination.....	47
	Permissible Crane (or Equipment) Height Determination–Additional Coordinates.	47
	Request for New Letter of Determination Due to Expiration.....	47
	Passenger Facility Charge (PFC)	47

TABLE OF CONTENTS (continued)

Other Fees	47
Auditorium Use Fee (Miami International Airport)	47
Conference Room Use Fee (Miami International Airport – Non Terminal)	47
Consular Lounge Annual Membership	47
Consular Lounge Rental Fee for Non-Member Organizations	47
Late Revenue Reporting Fee	47
Wheelchair Lift Fee	47
Security Violation Fee	47
Permit Application Fee for Provider of Goods and Services	47
Permit Extension Fee	48
Aircraft Demolition Fee	48
Baggage or Property Impound Fee	48
Background Check Fee	48
Animal Inspection Facility User Fees	48
Average Electrical Consumption per Kilowatt Hour	48
Airside Enforcement Processing Fee	48
Violation Fees for Airport Concessionaires or Tenants	48
Violation of Permitted Use of a Location	48
Failure to Maintain Required Hours of Operation	48
Unauthorized Advertising	48
Failure to Maintain Premises in a Clean State	48
Failure to Maintain Pricing or Conduct Surveys	48
Installation of Unapproved Items	48
Violation of Other Terms and Conditions	48

APPENDICES

Appendix A	49
Terminal Rental Calculation—Allocation of Expenses by Cost Center	A-1 to A-6
Appendix B	50
CUTE / CUSS Exhibits	B-1 to B-6
Appendix C	51
Airport Traffic Report	C-1

SUMMARY TAB

SUMMARY OF AIRLINE CHARGES
MIAMI INTERNATIONAL AIRPORT
FY 2014-15

Rate Type	Actual FY 2012-13	Actual FY 2013-14	Adopted FY 2014-15	Variance Adopted vs. FY 2014	
				Amount	Percentage
AIRFIELD					
Landing Fees	\$1.75	\$1.75	<i>\$1.58</i>	(\$0.17)	-9.9%
Loading Bridge	\$35.00	\$35.00	<i>\$35.00</i>	\$0.00	0.0%
Preconditioned Air:					
Narrow-body	\$18.34	\$18.34	<i>\$18.34</i>	\$0.00	0.0%
Wide-body	40.58	40.58	<i>40.58</i>	0.00	0.0%
Jumbo-body	54.15	54.15	<i>54.15</i>	0.00	0.0%
TERMINAL					
Domestic Arriving Seat					
Concourse	\$4.15	\$4.32	<i>\$4.32</i>	\$0.00	0.0%
Baggage Claim	<u>1.49</u>	<u>1.47</u>	<u><i>1.47</i></u>	<u>0.00</u>	0.0%
	\$5.64	\$5.79	<i>\$5.79</i>	\$0.00	0.0%
Domestic Departing Seat					
Concourse	\$4.15	\$4.32	<i>\$4.32</i>	\$0.00	0.0%
Screening	0.50	0.49	<i>0.46</i>	(0.03)	-6.1%
Baggage Make-up Maintenance (1)	0.76	0.74	<i>0.76</i>	0.02	2.7%
Baggage Make-up Capital (4)	<u>0.49</u>	<u>0.39</u>	<u><i>0.37</i></u>	<u>(0.02)</u>	-5.1%
	\$5.90	\$5.94	<i>\$5.91</i>	(\$0.03)	-0.5%
International Arriving Seat					
Concourse	\$4.15	\$4.32	<i>\$4.32</i>	\$0.00	0.0%
International Facilities	<u>1.62</u>	<u>1.90</u>	<u><i>1.87</i></u>	<u>(0.03)</u>	-1.6%
	\$5.77	\$6.22	<i>\$6.19</i>	(\$0.03)	-0.5%
International Departing Seat					
Concourse	\$4.15	\$4.32	<i>\$4.32</i>	\$0.00	0.0%
Screening	0.50	0.49	<i>0.46</i>	(0.03)	-6.1%
Baggage Make-up Maintenance (1)	0.76	0.74	<i>0.76</i>	0.02	2.7%
Baggage Make-up Capital (4)	<u>0.49</u>	<u>0.39</u>	<u><i>0.37</i></u>	<u>(0.02)</u>	-5.1%
	\$5.90	\$5.94	<i>\$5.91</i>	(\$0.03)	-0.5%
Terminal Rent					
Class I	\$153.54	\$159.84	<i>\$83.05</i>	(\$76.79)	-48.0%
Class II	115.16	119.88	<i>124.58</i>	4.70	3.9%
Class III	76.77	79.92	<i>83.05</i>	3.13	3.9%
Class IV	38.39	39.96	<i>41.53</i>	1.57	3.9%
Class V	19.19	19.98	<i>20.76</i>	0.78	3.9%
Class VI	76.77	79.92	<i>83.05</i>	3.13	3.9%
CUTE Rates					
Infrastructure Fee per Departing Seat (2)	\$0.05	\$0.05	<i>\$0.02</i>	(\$0.03)	-60.0%
Gate Usage Fee per Departing Seat	0.14	0.16	<i>0.19</i>	0.03	18.8%
CUTE Equipment Rental (3)	\$3.80	\$4.69	<i>\$0.57</i>	(\$4.12)	-87.8%
Class I Rental (3)	8.24	6.41	<i>0.37</i>	(6.04)	-94.2%
Class IV Rental (3)	7.98	8.30	<i>0.80</i>	(7.50)	-90.4%
Common Use Display (3)	0.29	0.29	<i>0.03</i>	(0.26)	-89.7%
Ticket Counter Usage Fee (3)	\$20.31	\$19.69	<i>\$1.77</i>	(\$17.92)	-91.0%

(1) American Airlines is excluded from this charge because this airline maintains its own baggage system.

(2) Fee is paid by all MIA passenger air carriers as an increase in the concourse use fee.

(3) CUTE equipment rental, space rental and backwall display charges are based on departing seats effective Oct. 1, 2014

(4) The capital recovery portion of Baggage Make-up is charged to all airlines.

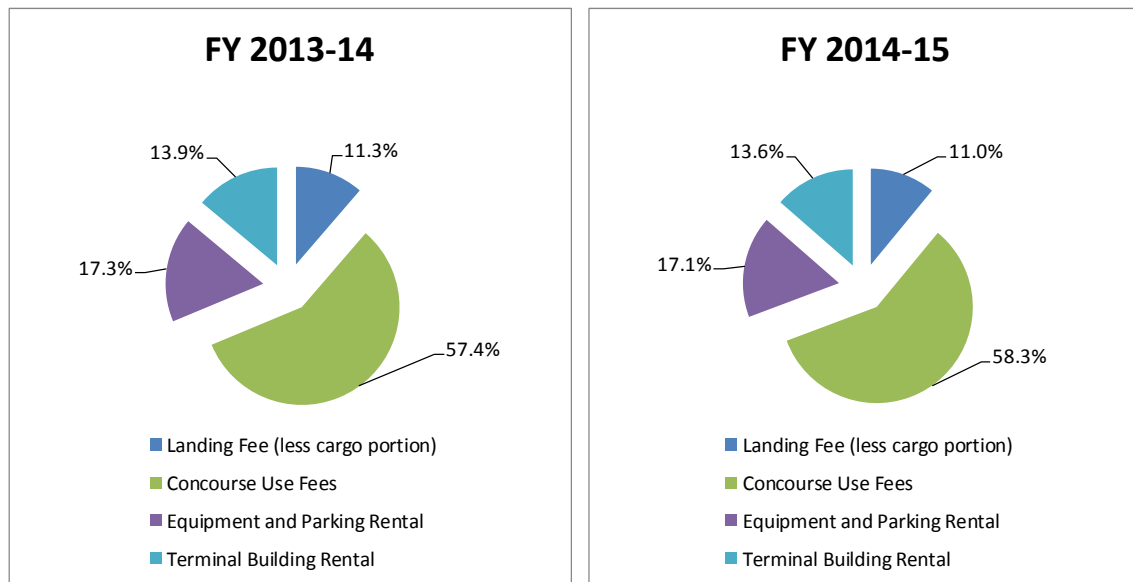
FINAL

AIRLINE COST PER ENPLANED PASSENGER
Miami-Dade County Aviation Department
Miami International Airport
FY 2014-15

		FY 2013-14	FY 2014-15
Landing Fee (less cargo portion)		\$46,262,705	\$45,920,667
Concourse Use Fees		234,520,819	243,958,849
Equipment and Parking Rental		70,870,244	71,707,756
Terminal Building Rental		56,969,163	56,794,184
<hr/>			
Total Airline Payments	[A]	\$408,622,931	\$418,381,456
Enplaned Passengers	[B]	20,100,000	20,775,000
Airline Cost per Enplaned Pax.	[A/B]	\$20.33	\$20.14
Airline Cost per Enplaned Pax per Traffic Engineers (a)		\$20.81	\$20.14

Notes:

(a) FY 2013-14 and FY 2014-15 represent the estimated airline cost per enplaned passenger contained in the 2012 Official Statement and report titled Update: Traffic & Financial Outlook draft dated July 2014, respectively.



AIRLINE RATES AND CHARGES METHODOLOGY AT MIAMI INTERNATIONAL AIRPORT

RESIDUAL LANDING FEE

- MDAD employs an “**airport system residual**” formula to calculate MIA landing fees.
- MDAD typically calculates landing fees effective October 1 based upon budget estimates and, if necessary, adjusts landing fees effective April 1 based upon revised estimates.
- Each year MDAD calculates MIA landing fees in such a way as to insure that revenues from landing fees together with revenues from all other sources will be at least sufficient to meet the requirements of the PAP Rate Covenant.

Landing Fee Calculation

Revenue Requirement

- + Principal and Interest Requirements
- + 20 percent coverage margin
- + Current Expenses
- + Changes in operating reserve
- + Deposit to Bond Reserve Account
- + Deposit to Reserve Maintenance Fund
- + Debt service on commercial paper
- + Debt service on other indebtedness
- + Required deposits for commercial paper and other indebtedness
- + Interest earnings—Reserve Maintenance Fund
- + Interest earning—Improvement Fund
- = Total Revenue Requirement

Revenue Credits

- Aviation Fees
- Terminal Rentals
- Commercial Revenues
- Other Revenues
- Deposit from Improvement Fund
- PAP Revenues net of Landing Fees
- = Subtotal Revenue Credits
- + Revenues for September landings
- = Total Revenue Credits

Revenue Requirement less Revenue Credits = Landing Fee Requirement

Divided by Total Landed Weight (11 months October thru August)

= Landing Fee Rate

TERMINAL RENTALS

- MDAD calculates terminal rents using a cost recovery approach under an equalized rate methodology. This means that rates for space are uniform within a category regardless of when the facility was built. (Concourse space in Concourses A and H have the same rental rates as similar categories of space in Concourses F and G.)
- The terminal rental rates and terminal user fees are effective October 1 based upon the annual budget and are not adjusted at mid-year.
- Terminal rental rate is calculated using a weighted rate based upon space classification, which is determined based on the type of space being utilized. Detailed information regarding this calculation and the space classification definitions are contained in the appendix at the end of the presentation.

Classification of Terminal Space

Class I—all space related to airline regular and special passenger service facilities, including ticket and interline counters, passenger service centers, and the like.

Class II—airline club rooms and all air-conditioned office space in the main Terminal Building, including the office tower, baggage service rooms and excluding the concourses outboard of security screening.

Class III—all other air-conditioned operating space including baggage claim, hold rooms, group rooms, concourse office space and the like.

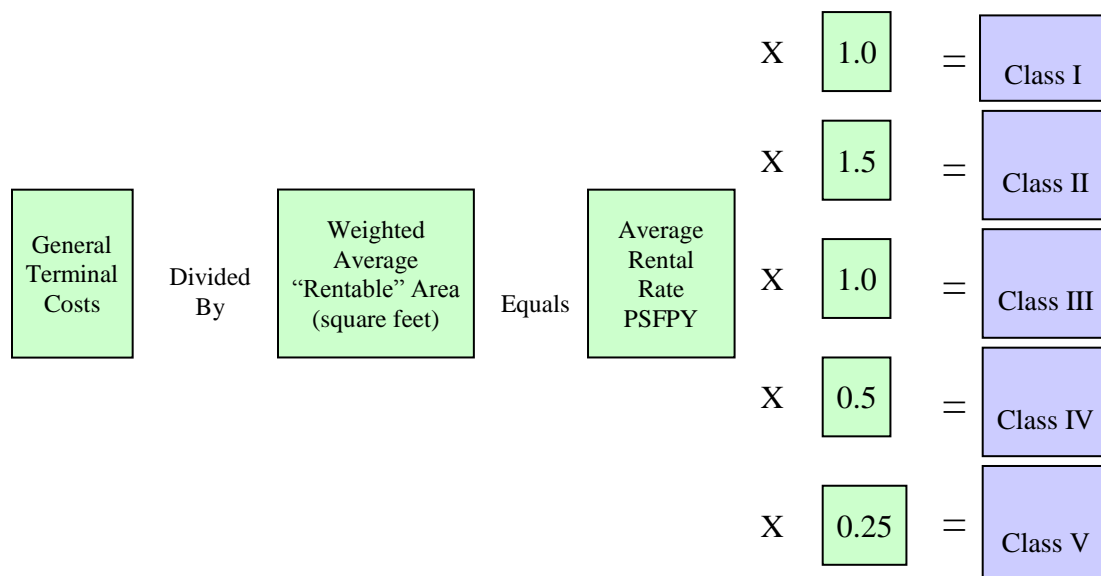
Class IV—all enclosed or semi-enclosed non-air-conditioned operating space including baggage make-up areas, parts storage and the like.

Class V—leased space created as part of the building shadow line, included in the Terminal pursuant to the definition of Terminal Building in the Lease.

Class VI—all other leasable revenue producing and concession space.

Nonrentable (support) space (**Class VII**) is apportioned to rentable areas.

Terminal Rental Rate Weighted Space Calculation



Terminal User Fees

- **Concourse Use Fee**—*Per arriving and per departing aircraft seat*
For the use of holdrooms, gate positions, and related passenger circulation areas that are made available to airlines on a common-use basis.
- **Domestic Baggage Claim Fee**—*Per arriving domestic aircraft seat*
For the use of terminal space and specialized terminal equipment dedicated to the domestic baggage claim function.
- **Screening Fee**—*Per departing aircraft seat*
For checkpoint security costs incurred by MDAD.
- **International Facilities Fee**—*Per arriving international aircraft seat*
For international capital and operational costs.
- **Outbound Baggage Fee**—*Per departing domestic and international seat (except for departing seats of airlines that operate and maintain their own outbound baggage system such as American)*
For outbound baggage systems equipment and operational costs.

Terminal User Fees Calculation

USE	Equals	RATE	Divided By	ACTIVITY
Concourse		Class III rental rate x Areas for holdrooms, domestic & int'l "sterile" circulation, FIS processing, & int'l baggage claim = Space costs (equivalent rental)		Arriving and departing seats
Domestic Baggage Claim		Space costs for domestic baggage claim + Cost of domestic claim equipment		Arriving domestic seats
Screening		Cost of screening equipment + Operating		Departing seats
International Facilities		Portion of costs of "E-satellite" shuttle + Int'l operations		Arriving international
Outbound Baggage – O&M		Operating expenses related to conventional system and to laser systems acquired from EA & PA		Departing seats (except AA)
Outbound Baggage – Capital		Amortization expense related to "conventional" portion of AA, EA, & PA laser systems		Departing seats

Airside Tab

LANDING FEE CALCULATION
MIAMI INTERNATIONAL AIRPORT
For Fiscal Years Ended September 30

	Budget Calculation		Variance	% Chg.
	FY 2013-14	FY 2014-15		
Landing Fee Calculation				
Airport System Requirement:				
Principal & Interest Requirement	\$374,328,000	\$375,107,000	\$779,000	0.2%
Less: PFC Revenue	(54,500,000)	(55,000,000)	(500,000)	0.9%
Net P & I Requirement	\$319,828,000	\$320,107,000	\$279,000	0.1%
Times Coverage Factor	<u>1.20</u>	<u>1.20</u>		
P&I Requirement Plus Coverage	\$383,793,600	\$384,128,400	\$334,800	0.1%
Current Expenses	442,121,987	457,971,325	15,849,338	3.6%
Increase/(Decrease) in O&M Reserve	4,322,975	4,904,997	582,022	13.5%
Deposit from Bond Service Account (Interest)	(3,000,000)	(3,000,000)	0	0.0%
Deposit to Reserve Maintenance Fund	15,000,000	17,000,000	2,000,000	13.3%
Subordinate Debt Payment	15,431,000	15,431,278	278	0.0%
Total Requirement [A]	\$857,669,562	\$876,436,000	\$18,766,438	2.2%
Less: Revenues Net of Landing Fees				
Aviation Fees	\$305,391,062	\$315,666,605	\$10,275,542	3.4%
Terminal Rentals	61,526,381	61,426,042	(100,340)	-0.2%
Structure & Other Rentals	60,832,504	58,565,313	(2,267,191)	-3.7%
Commercial Revenues	253,941,748	283,686,109	29,744,361	11.7%
Other Revenues	16,115,746	16,899,550	783,803	4.9%
G/A Airports	6,709,672	7,791,590	1,081,918	16.1%
Transfer from Improvement Fund (Deposit to RF)	95,000,000	75,000,000	(20,000,000)	-21.1%
Total Revenues [B]	\$799,517,114	\$819,035,208	\$19,518,094	2.4%
Amount Recovered from Landing Fees [A-B] [C]	\$58,152,448	\$57,400,792	(\$751,656)	-1.3%
Less: Sept. collections (prior yr) from Ldg. Fees [D]	\$4,383,834	\$4,532,661	148,827	3.4%
Net Amt Recovered from Landing Fees [C-D] [E]	\$53,768,614	\$52,868,131	(\$900,483)	-1.7%
Estimated Landed Weight in 1,000 lb. units (1) [F]	30,694,000	33,485,000	2,791,000	9.1%
Landing Fee Rate (per 1,000 lb. unit) [E/F] [G]	\$1.75	\$1.58	(\$0.17)	-9.9%
Total Landing Fee Revenue [G*F+D]	\$58,152,448	\$57,400,792	-\$751,656	-1.3%

(1) Represents estimated landed weight for 11 months.

AIRCRAFT PARKING FEES MIAMI INTERNATIONAL AIRPORT

(Policy last updated October 1, 2008 and is subject to change)

Regular Aircraft Parking – Passenger aircraft using terminal gates, hardstands or remote positions will accrue parking fees if any of the following conditions exist:

- (A) Aircraft that park on a hardstand or remote position will be charged after a two (2) hour grace period. Subsequent daily charges will apply every 24 hours.
- (B) Aircraft that park at a terminal gate will be charged the first day parking charge after a four (4) hour grace period. Subsequent daily charges will apply every 24 hours.

Regular aircraft parking charges will reflect (24 hour) daily rates for 1 to 5 days, 6 to 15 days, 16 to 30 days, and 31+ days. Minimum charge for M-1 type aircraft will be \$11.00 per day for 1 to 5 days and increase thereafter. An aircraft take-off and landing will allow the parking rate to revert back to day one (1). No aircraft parking at MIA shall exceed forty-five (45) consecutive days without express written consent from the Assistant Director of Airside Operations, or an Airside Division designee.

Overtime Parking - Aircraft and/or ground service equipment (GSE) that do not depart or are not removed from the terminal gates, hardstands and cargo spots at the agreed upon time, and cause another aircraft to hold for that gate, hardstand or cargo spot, or block its departure from that gate, hardstand or cargo spot, or causes a gate or spot change will be charged for overtime parking.

Overtime parking charges are assessed at the rate of \$100.00 per 30 minutes or fraction thereof in excess of one hour for deplanements, one hour for enplanements, and two hours for an arrival/departure turnaround.

Premium Charges - Per Resolution No R-730-80, regular commercial users who do not have an MDAD credit account in good standing and who have had more than six (6) landings during any 90-day period, will be assessed an additional premium charge. The premium charge amounts to 50% of all aviation fees and charges. Regular commercial users are defined as those who operate aircraft for compensation or hire. The premium charge will be assessed starting on the seventh (7th) landing and will be added to the total of all other aviation fees charged.

Major Maintenance - Aircraft on regular aircraft parking that are performing major maintenance will be charged a major maintenance fee separately from the storage parking fee.

Aircraft requiring major maintenance (other than regular turn-around maintenance) while parked at common use aircraft parking positions will be charged \$300.00 per 24-hour period.

AIRCRAFT PARKING FEES (continued)

Cargo Aircraft Parking Position Fees—payable whenever an aircraft uses a designated MDAD cargo position. Fees commence on the arrival of the aircraft at the cargo position. Charges are listed below.

- Aircraft 60,000 lbs and under in landed weight
 - First 4 hours \$60.00
 - Each additional hour \$15.00
 - 24 hour maximum \$360.00
- Aircraft between 60,001 and 270,000 lbs in landed weight
 - First 4 hours \$120.00
 - Each additional hour \$30.00
 - 24 hour maximum \$720.00
- Aircraft in excess of 270,000 lbs in landed weight
 - First 4 hours \$200.00
 - Each additional hour \$60.00
 - 24 hour maximum \$1,400.00

Derelict or Non-Operating Aircraft - Fee of up to \$500.00 per day for each day a tenant or airport user parks or stores a derelict or non-operating aircraft of any size or parts thereof on airport premises beyond the permitted sixty (60) day period.

New Fees for Charter Airlines (effective October 1, 2006)

VIP Ramp Escort Fee – MIA provides a premium service whereby passengers are escorted directly to or from the steps of the aircraft parked at an airfield location. The charter operator is responsible for providing the passenger ground transportation vehicle, which must be escorted onto the airfield by MDAD personnel.

All of the following fees apply to charter operators providing this service to their customers:

1. An escort/attendant fee associated with the mandatory escort of vehicle(s) to be used for transporting passengers on the airfield. Fee will be \$150.00 for each hour (2-hour minimum) to cover escort vehicles' operating costs and labor (escort/attendant).
2. A fee for the use of MDAD owned stair truck (if used) as listed in the Ground Support Charges schedule (page 12).
3. Landing Fee (for arriving charters) as shown on the Summary of Airline Charges (page 2) schedule.
4. Inspection Fees: charter operator will be responsible for arranging separately and paying for, applicable services required by Federal agencies including the Transportation Security Administration (TSA) for departing flights, and FIS for arriving international flights.

HANDLING BY FBO (Fixed Base Operator)

A charter operator may contract with an FBO to perform various ground handling services. Such services are provided on the premises of the FBO. In addition to landing fees and other charges that the FBO may be required to collect for the use of various Airport facilities and services, the FBO may establish its own charges for services rendered. Charter operators should contact the FBO for all charges.

HANDLING BY AUTHORIZED GROUND HANDLER

Authorized ground handlers compete for the services of charter and scheduled airline operators at MIA. Such ground handlers utilize the existing terminal facilities (check-in counters and gates) to process passengers, baggage and the aircraft. Charter operators contract directly with such ground handlers. In addition to landing fees and other charges that the ground handler may be required to collect for the use of various Airport facilities and services, the ground handler may establish its own charges for services rendered. Charter operators should contact the ground handler for all charges.

***SEE SCHEDULE AT THE END OF THIS SECTION FOR LANDED WEIGHT AND
AIRCRAFT PARKING COST BY AIRCRAFT TYPE***

GROUND SUPPORT CHARGES MIAMI INTERNATIONAL AIRPORT AS OF OCTOBER 1, 2014

Pre-conditioned Air All aircraft using a gate equipped with preconditioned air will be charged preconditioned air fees. The use for the aircraft preconditioned air supply equipment will continue to be assessed to all airlines using the system by aircraft type. The rates will remain as follows:

Narrow Body (N)	=	\$18.34 for any use (per arrival – no time limit)
Wide Body (W)	=	\$40.58 for any use (per arrival – no time limit)
Jumbo Body (J)	=	\$54.15 for any use (per arrival – no time limit)

MDAD account customers will report all preconditioned air system uses directly to the Finance Division on a monthly basis. The Finance Division will supply the correct form for reporting the usage.

MDAD Loading Bridges = **\$35.00 per arrival and/or \$35.00 per departure.** All aircraft using additional loading bridges (more than one) will be charged \$35.00 per arrival and/or \$35.00 per departure for each additional loading bridge used.

Stair Truck Usage Fee = **\$100.00 per hour** Note: This fee is only waived for use on United States military aircraft.

Escort Fee - Aircraft = **\$100.00 per escort**

Escort Fee - Delivery Vehicles or Non-Passenger Vehicles = **\$10.00 per escort**

Escort Fee - Vehicle Escort for VIP Pickup at General Aviation Aircraft = **\$20.00 per escort**

Fuel Stop Fees:

- Terminal Gate – Aircraft using a terminal gate for a fuel stop will be charged a terminal fuel stop fee equivalent to a concourse fee, and a one-way loading bridge fee for a maximum of two (2) hours. Any additional time will incur overtime parking fees.
- Remote Locations and General Aviation Center (GAC) – A fuel stop fee equivalent to a one-day parking charge per aircraft type will be charged at remote locations and the General Aviation Center for aircraft refueling operations up to a maximum of two (2) hours. Any additional parking time will incur parking fees.

General Aviation Center (GAC) Facility Fee

- GAC Domestic Fee – The fee shall be equal to the base concourse use fee for each inbound and each outbound domestic operation performed by commercial operators carrying passengers for hire that use the domestic portion of the GAC facility.
- GAC International Fee – The fee shall be equal to the base concourse use fee and international facility fee for each international arrival, and a base concourse fee for each international departure performed by commercial operators carrying passengers for hire that use the international portion of the GAC facility.

MIAMI-DADE AVIATION DEPARTMENT
AVIATION CHARGES AT MIAMI INTERNATIONAL AIRPORT
Effective October 1, 2014 - September 30, 2015
Based on \$1.58 per 1,000 Pounds of Nominal Gross Landed Weight

Aircraft Type		Landing Weight	Landing Charges	All Airlines Domestic Arrival	All Departing CUTE Gates	RENTAL FEE	All Airlines Departure	All Airlines International Arrival	GAC International Arrival	GAC DOMESTIC Arriv/Dep	GAC/Remote Fuel Stop	Terminal Fuel Stop	1-5 Days	6-15 Days	16-30 Days	31+ Days
A300	W	293,000	462.94	1,464.87	48.07	447.81	1,500.29	1,566.07	1,566.07	1,092.96	170.00	1,127.96	170.00	255.00	340.00	680.00
A300-600/600R	W	309,000	488.22	1,545.93	50.73	472.59	1,583.31	1,652.73	1,652.73	1,153.44	172.00	1,188.44	172.00	258.00	344.00	688.00
A310-200	W	261,000	412.38	1,175.37	38.57	359.31	1,203.79	1,256.57	1,256.57	876.96	145.00	911.96	145.00	217.50	290.00	580.00
A310-300	W	272,000	429.76	1,111.68	36.48	339.84	1,138.56	1,188.48	1,188.48	829.44	145.00	864.44	145.00	217.50	290.00	580.00
A318	N	124,000	195.92	579.00	19.00	177.00	593.00	619.00	619.00	432.00	76.00	467.00	76.00	114.00	152.00	304.00
A319	N	136,000	214.88	717.96	23.56	219.48	735.32	767.56	767.56	535.68	82.00	570.68	82.00	123.00	164.00	328.00
A319WINGLET	N	136,000	214.88	717.96	23.56	219.48	735.32	767.56	767.56	535.68	82.00	570.68	82.00	123.00	164.00	328.00
A320-100	N	142,000	224.36	851.13	27.93	260.19	871.71	909.93	909.93	635.04	91.00	670.04	91.00	136.50	182.00	364.00
A320-200	N	142,000	224.36	880.08	28.88	269.04	901.36	940.88	940.88	656.64	91.00	691.64	91.00	136.50	182.00	364.00
A320-200 WINGLET	N	142,000	224.36	874.29	28.69	267.27	895.43	934.69	934.69	652.32	95.00	687.32	95.00	142.50	190.00	380.00
A321	N	161,000	254.38	1,082.73	35.53	330.99	1,108.91	1,157.53	1,157.53	807.84	107.00	842.84	107.00	160.50	214.00	428.00
A321WINGLET	W	161,000	254.38	1,082.73	35.53	330.99	1,108.91	1,157.53	1,157.53	807.84	113.00	842.84	113.00	169.50	226.00	452.00
A330-200	W	402,000	635.16	1,534.35	50.35	469.05	1,571.45	1,640.35	1,640.35	1,144.80	251.00	1,179.80	251.00	376.50	502.00	1,004.00
A330-200-F		413,000	652.54	0.00	0.00	0.00	0.00	0.00	0.00	0.00	251.00	35.00	251.00	376.50	502.00	1,004.00
A330-300	W	413,000	652.54	1,644.36	53.96	502.68	1,684.12	1,757.96	1,757.96	1,226.88	272.00	1,261.88	272.00	408.00	544.00	1,088.00
A340-200	W	407,000	643.06	1,430.13	46.93	437.19	1,464.71	1,528.93	1,528.93	1,067.04	254.00	1,102.04	254.00	381.00	508.00	1,016.00
A340-300	W	423,000	668.34	1,644.36	53.96	502.68	1,684.12	1,757.96	1,757.96	1,226.88	272.00	1,261.88	272.00	408.00	544.00	1,088.00
A340-500	W	543,000	857.94	1,945.44	63.84	594.72	1,992.48	2,079.84	2,079.84	1,451.52	305.00	1,486.52	305.00	457.50	610.00	1,220.00
A340-600	W	585,000	924.30	1,922.28	63.08	587.64	1,968.76	2,055.08	2,055.08	1,434.24	338.00	1,469.24	338.00	507.00	676.00	1,352.00
A350-1000	W	515,000	813.70	2,026.50	66.50	619.50	2,075.50	2,166.50	2,166.50	1,512.00	339.00	1,547.00	339.00	508.50	678.00	1,356.00
A350-800	W	425,000	671.50	1,563.30	51.30	477.90	1,601.10	1,671.30	1,671.30	1,166.40	279.00	1,201.40	279.00	418.50	558.00	1,116.00
A350-900	W	452,000	714.16	1,818.06	59.66	555.78	1,862.02	1,943.66	1,943.66	1,356.48	308.00	1,391.48	308.00	462.00	616.00	1,232.00
A380	J	871,000	1,376.18	3,045.54	99.94	931.02	3,119.18	3,255.94	3,255.94	2,272.32	412.00	2,307.32	412.00	618.00	824.00	1,648.00
A380-F	J	942,000	1,488.36	0.00	0.00	0.00	0.00	0.00	0.00	0.00	412.00	35.00	412.00	618.00	824.00	1,648.00
AEROSPATIALE SN601 (CORVETTE 100)		15,000	23.70	69.48	2.28	21.24	71.16	74.28	74.28	51.84	13.00	86.84	13.00	19.50	26.00	52.00
AN-2		15,000	23.70	52.11	1.71	15.93	53.37	55.71	55.71	38.88	16.00	73.88	16.00	24.00	32.00	64.00
AN-10		122,000	192.76	492.15	16.15	150.45	504.05	526.15	526.15	367.20	100.00	402.20	100.00	150.00	200.00	400.00
AN-12		122,000	192.76	0.00	0.00	0.00	0.00	0.00	0.00	0.00	89.00	35.00	89.00	133.50	178.00	356.00
AN-22		500,000	790.00	0.00	0.00	0.00	0.00	0.00	0.00	0.00	264.00	35.00	264.00	396.00	528.00	1,056.00
AN-24		46,000	72.68	289.50	9.50	88.50	296.50	309.50	309.50	216.00	49.00	251.00	49.00	73.50	98.00	196.00
AN-26		53,000	83.74	243.18	7.98	74.34	249.06	259.98	259.98	181.44	49.00	216.44	49.00	73.50	98.00	196.00
AN-30		51,000	80.58	0.00	0.00	0.00	0.00	0.00	0.00	0.00	51.00	35.00	51.00	76.50	102.00	204.00
AN-32		57,000	90.06	301.08	9.88	92.04	308.36	321.88	321.88	224.64	49.00	259.64	49.00	73.50	98.00	196.00
AN-72/74		66,000	104.28	0.00	0.00	0.00	0.00	0.00	0.00	0.00	53.00	35.00	53.00	79.50	106.00	212.00
AN-124	W	729,000	1,151.82	2,026.50	66.50	619.50	2,075.50	2,166.50	2,166.50	1,512.00	340.00	1,547.00	340.00	510.00	680.00	1,360.00
AN-225		1,213,000	1,916.54	0.00	0.00	0.00	0.00	0.00	0.00	0.00	516.00	35.00	516.00	774.00	1,032.00	2,064.00
ATL98 (CARVAIR)		64,000	101.12	0.00	0.00	0.00	0.00	0.00	0.00	0.00	45.00	35.00	45.00	67.50	90.00	180.00
ATR42-300		36,000	56.88	243.18	7.98	74.34	249.06	259.98	259.98	181.44	39.00	216.44	39.00	58.50	78.00	156.00
ATR42-320		36,000	56.88	266.34	8.74	81.42	272.78	284.74	284.74	198.72	39.00	233.72	39.00	58.50	78.00	156.00
ATR42-500		40,000	63.20	266.34	8.74	81.42	272.78	284.74	284.74	198.72	39.00	233.72	39.00	58.50	78.00	156.00
ATR72-200		47,000	74.26	382.14	12.54	116.82	391.38	408.54	408.54	285.12	52.00	320.12	52.00	78.00	104.00	208.00
ATR72-210		47,000	74.26	382.14	12.54	116.82	391.38	408.54	408.54	285.12	52.00	320.12	52.00	78.00	104.00	208.00
ATR72-500		49,000	77.42	370.56	12.16	113.28	379.52	396.16	396.16	276.48	52.00	311.48	52.00	78.00	104.00	208.00
AYRES LM-200 (LOADMASTER T801 & CTP800)		19,000	30.02	156.33	5.13	47.79	160.11	167.13	167.13	116.64	65.00	151.64	65.00	97.50	130.00	260.00
BAC 1-11 400	N	87,000	137.46	515.31	16.91	157.53	527.77	550.91	550.91	384.48	54.00	419.48	54.00	81.00	108.00	216.00
BAC 1-11 500 & ROMBAC 1-11 2500	N	86,000	135.88	689.01	22.61	210.63	705.67	736.61	736.61	514.08	66.00	549.08	66.00	99.00	132.00	264.00
BAe 125 (ALL)		23,000	36.34	46.32	1.52	14.16	47.44	49.52	49.52	34.56	17.00	69.56	17.00	25.50	34.00	68.00
BAe 146-100	N	77,000	121.66	457.41	15.01	139.83	468.47	489.01	489.01	341.28	49.00	376.28	49.00	73.50	98.00	196.00
BAe 146-200	N	89,000	140.62	544.26	17.86	166.38	557.42	581.86	581.86	406.08	53.00	441.08	53.00	106.00	142.00	284.00
BAe 146-300	N	84,000	132.72	625.32	20.52	191.16	640.44	668.52	668.52	466.56	58.00	501.56	58.00	87.00	116.00	232.00
BAe 800		23,000	36.34	81.06	2.66	24.78	83.02	86.66	86.66	60.48	17.00	95.48	17.00	25.50	34.00	68.00
BAe 1000		25,000	39.50	86.85	2.85	26.55	88.95	92.85	92.85	64.80	18.00	99.80	18.00	27.00	36.00	72.00
BAe ATP		49,000	77.42	405.30	13.30	123.90	415.10	433.30	433.30	302.40	56.00	337.40	56.00	84.00	112.00	224.00
BAe 3100/JETSTREAM 31		15,000	23.70	104.22	3.42	31.86	106.74	111.42	111.42	77.76	16.00	112.76	16.00	24.00	32.00	64.00
BAe 3200/JETSTREAM SUPER 31		16,000	25.28	110.01	3.61	33.63	112.67	117.61	117.61	82.08	16.00	117.08	16.00	24.00	32.00	64.00
BAe JETSTREAM 41 & SUPER 41		23,000	36.34	173.70	5.70	53.10	177.90	185.70	185.70	129.60	25.00	164.60	25.00	37.50	50.00	100.00
BAe JETSTREAM 61		51,000	80.58	405.30	13.30	123.90	415.10	433.30	433.30	302.40	25.00	337.40	25.00	37.50	50.00	100.00
BAe 32EP		16,000	25.28	110.01	3.61	33.63	112.67	117.61	117.61	82.08	16.00	117.08	16.00	24.00	32.00	64.00
BAe RJ70 & HGW (AVRO)	N	83,000	131.14	544.26	17.86	166.38	557.42	581.86	581.86	406.08	29.00	441.08	29.00	43.50	58.00	116.00
BAe RJ85 & HGW (AVRO)	N	85,000	134.30	538.47	17.67	164.61	551.49	575.67	575.67	401.76	36.00	436.76	36.00	54.00	72.00	144.00
BAe RJ100 & HGW (AVRO)	N	88,000	139.04	706.38	23.18	215.94	723.46	755.18	755.18	527.04	44.00	562.04	44.00	66.00	88.00	176.00
BEECH 400A		16,000	25.28	46.32	1.52	14.16	47.44	49.52	49.52	34.56	14.00	69.56	14.00	21.00	28.00	56.00

MIAMI-DADE AVIATION DEPARTMENT
AVIATION CHARGES AT MIAMI INTERNATIONAL AIRPORT
Effective October 1, 2014 - September 30, 2015
Based on \$1.58 per 1,000 Pounds of Nominal Gross Landed Weight

Aircraft Type		Landing Weight	Landing Charges	All Airlines Domestic Arrival	All Departing CUTE Gates	CUTE RENTAL FEE	All Airlines Departure	All Airlines International Arrival	GAC International Arrival	GAC DOMESTIC Arriv/Dep	GAC/Remote Fuel Stop	Terminal Fuel Stop	1-5 Days	6-15 Days	16-30 Days	31+ Days
BEECHCRAFT B-99 (99)		15,000	23.70	86.85	2.85	26.55	88.95	92.85	92.85	64.80	13.00	99.80	13.00	19.50	26.00	52.00
BEECHCRAFT B-1900 C/D		16,000	25.28	110.01	3.61	33.63	112.67	117.61	117.61	82.08	21.00	117.08	21.00	31.50	42.00	84.00
BEECH (EXCEPT THOSE LISTED)	M1	15,000	23.70	46.32	1.52	14.16	47.44	49.52	49.52	34.56	11.00	69.56	11.00	16.50	22.00	44.00
BELLANCA (ALL)	M1	15,000	23.70	23.16	0.76	7.08	23.72	24.76	24.76	17.28	11.00	52.28	11.00	16.50	22.00	44.00
B-707	N	247,000	390.26	851.13	27.93	260.19	871.71	909.93	909.93	635.04	147.00	670.04	147.00	220.50	294.00	588.00
B-717-200 & HGW (FORMERLY MD-9)	N	103,000	162.74	677.43	22.23	207.09	693.81	724.23	724.23	505.44	76.00	540.44	76.00	114.00	152.00	304.00
B-727-100	N	141,000	222.78	689.01	22.61	210.63	705.67	736.61	736.61	514.08	95.00	549.08	95.00	142.50	190.00	380.00
B-727-200/200ADV	N	155,000	244.90	868.50	28.50	265.50	889.50	928.50	928.50	648.00	109.00	683.00	109.00	163.50	218.00	436.00
B-737-100	N	96,000	151.68	619.53	20.33	189.39	634.51	662.33	662.33	462.24	57.00	497.24	57.00	85.50	114.00	228.00
B-737-200	N	98,000	154.84	694.80	22.80	212.40	711.60	742.80	742.80	518.40	61.00	553.40	61.00	91.50	122.00	244.00
B-737-200C	N	102,000	161.16	671.64	22.04	205.32	687.88	718.04	718.04	501.12	61.00	536.12	61.00	91.50	122.00	244.00
B-737-200WINGLET	N	98,000	154.84	694.80	22.80	212.40	711.60	742.80	742.80	518.40	68.00	553.40	68.00	102.00	136.00	272.00
B-737-300	N	115,000	181.70	694.80	22.80	212.40	711.60	742.80	742.80	518.40	68.00	553.40	68.00	102.00	136.00	272.00
B-737-300W	N	115,000	181.70	694.80	22.80	212.40	711.60	742.80	742.80	518.40	74.00	553.40	74.00	111.00	148.00	296.00
B-737-400	N	123,000	194.34	856.92	28.12	261.96	877.64	916.12	916.12	639.36	75.00	674.36	75.00	112.50	150.00	300.00
B-737-400WINGLET	N	123,000	194.34	856.92	28.12	261.96	877.64	916.12	916.12	639.36	80.00	674.36	80.00	120.00	160.00	320.00
B-737-500	N	110,000	173.80	694.80	22.80	212.40	711.60	742.80	742.80	518.40	64.00	553.40	64.00	96.00	128.00	256.00
B-737-500W	N	110,000	173.80	694.80	22.80	212.40	711.60	742.80	742.80	518.40	68.00	553.40	68.00	102.00	136.00	272.00
B-737-600	N	121,000	191.18	689.01	22.61	210.63	705.67	736.61	736.61	514.08	76.00	549.08	76.00	114.00	152.00	304.00
B-737-700	N	128,000	202.24	717.96	23.56	219.48	735.32	767.56	767.56	535.68	82.00	570.68	82.00	123.00	164.00	328.00
B-737-700WINGLET	N	128,000	202.24	717.96	23.56	219.48	735.32	767.56	767.56	535.68	85.00	570.68	85.00	127.50	170.00	340.00
B-737-800	N	144,000	227.52	926.40	30.40	283.20	948.80	990.40	990.40	691.20	96.00	726.20	96.00	144.00	192.00	384.00
B-737-800WINGLET	N	144,000	227.52	926.40	30.40	283.20	948.80	990.40	990.40	691.20	100.00	726.20	100.00	150.00	200.00	400.00
B-737-900	N	146,000	230.68	966.93	31.73	295.59	990.31	1,033.73	1,033.73	721.44	102.00	756.44	102.00	153.00	204.00	408.00
B-737-900 WINGLET	N	146,000	230.68	966.93	31.73	295.59	990.31	1,033.73	1,033.73	721.44	107.00	756.44	107.00	160.50	214.00	428.00
B747-LCF	W	575,000	908.50	0.00	0.00	0.00	0.00	0.00	0.00	0.00	327.00	35.00	327.00	490.50	654.00	1,308.00
B-747-100	J	575,000	908.50	2,275.47	74.67	695.61	2,330.49	2,432.67	2,432.67	1,697.76	298.00	1,732.76	298.00	447.00	596.00	1,192.00
B-747-100B & SR/SF	J	564,000	891.12	3,184.50	104.50	973.50	3,261.50	3,404.50	3,404.50	2,376.00	298.00	2,411.00	298.00	447.00	596.00	1,192.00
B-747-200	J	630,000	995.40	2,124.93	69.73	649.59	2,176.31	2,271.73	2,271.73	1,585.44	298.00	1,620.44	298.00	447.00	596.00	1,192.00
B-747-200B	J	595,000	940.10	2,316.00	76.00	708.00	2,372.00	2,476.00	2,476.00	1,728.00	298.00	1,763.00	298.00	447.00	596.00	1,192.00
B-747-200C	J	621,000	981.18	1,412.76	46.36	431.88	1,446.92	1,510.36	1,510.36	1,054.08	298.00	1,089.08	298.00	447.00	596.00	1,192.00
B-747-200 CF	J	630,000	995.40	1,412.76	46.36	431.88	1,446.92	1,510.36	1,510.36	1,054.08	298.00	1,089.08	298.00	447.00	596.00	1,192.00
B-747-300	J	564,000	891.12	2,339.16	76.76	715.08	2,395.72	2,500.76	2,500.76	1,745.28	298.00	1,780.28	298.00	447.00	596.00	1,192.00
B-747-300C	J	605,000	955.90	1,505.40	49.40	460.20	1,541.80	1,609.40	1,609.40	1,123.20	298.00	1,158.20	298.00	447.00	596.00	1,192.00
B-747-300SR	J	525,000	829.50	3,612.96	118.56	1,104.48	3,700.32	3,862.56	3,862.56	2,695.68	298.00	2,730.68	298.00	447.00	596.00	1,192.00
B-747-400	J	608,000	960.64	2,194.41	72.01	670.83	2,247.47	2,346.01	2,346.01	1,637.28	322.00	1,672.28	322.00	483.00	644.00	1,288.00
B-747-400C (COMBI)	J	611,000	965.38	2,321.79	76.19	709.77	2,377.93	2,482.19	2,482.19	1,732.32	322.00	1,767.32	322.00	483.00	644.00	1,288.00
B-747-400F	J	666,000	1,052.28	0.00	0.00	0.00	0.00	0.00	0.00	0.00	322.00	35.00	322.00	483.00	644.00	1,288.00
B-747-8F	J	763,000	1,205.54	0.00	0.00	0.00	0.00	0.00	0.00	0.00	369.00	35.00	369.00	553.50	738.00	1,476.00
B-747-8I	J	688,000	1,087.04	2,095.98	68.78	640.74	2,146.66	2,240.78	2,240.78	1,563.84	369.00	1,598.84	369.00	553.50	738.00	1,476.00
B-747SP	J	450,000	711.00	1,470.66	48.26	449.58	1,506.22	1,572.26	1,572.26	1,097.28	238.00	1,132.28	238.00	357.00	476.00	952.00
B-757-200 & ER	N	200,000	316.00	1,088.52	35.72	332.76	1,114.84	1,163.72	1,163.72	812.16	127.00	847.16	127.00	190.50	254.00	508.00
B-757-200PF	N	210,000	331.80	0.00	0.00	0.00	0.00	0.00	0.00	0.00	127.00	35.00	127.00	190.50	254.00	508.00
B-757-WINGLET	N	200,000	316.00	1,088.52	35.72	332.76	1,114.84	1,163.72	1,163.72	812.16	137.00	847.16	137.00	205.50	274.00	548.00
B-757-300	N	224,000	353.92	1,233.27	40.47	377.01	1,263.09	1,318.47	1,318.47	920.16	147.00	955.16	147.00	220.50	294.00	588.00
B-757-300 WINGLET	N	224,000	353.92	1,233.27	40.47	377.01	1,263.09	1,318.47	1,318.47	920.16	158.00	955.16	158.00	237.00	316.00	632.00
B-767-200	W	272,000	429.76	972.72	31.92	297.36	996.24	1,039.92	1,039.92	725.76	163.00	760.76	163.00	244.50	326.00	652.00
B-767-200ER	W	300,000	474.00	972.72	31.92	297.36	996.24	1,039.92	1,039.92	725.76	163.00	760.76	163.00	244.50	326.00	652.00
B-767-300	W	300,000	474.00	1,320.12	43.32	403.56	1,352.04	1,411.32	1,411.32	984.96	185.00	1,019.96	185.00	277.50	370.00	740.00
B-767-300 WINGLET	W	320,000	505.60	1,320.12	43.32	403.56	1,352.04	1,411.32	1,411.32	984.96	198.00	1,019.96	198.00	297.00	396.00	792.00
B-767-300ER	W	320,000	505.60	1,320.12	43.32	403.56	1,352.04	1,411.32	1,411.32	984.96	185.00	1,019.96	185.00	277.50	370.00	740.00
B-767-400ER	W	350,000	553.00	1,424.34	46.74	435.42	1,458.78	1,522.74	1,522.74	1,062.72	226.00	1,097.72	226.00	339.00	452.00	904.00
B-777-200/200B/200ER	W	470,000	742.60	1,482.24	48.64	453.12	1,518.08	1,584.64	1,584.64	1,105.92	275.00	1,140.92	275.00	412.50	550.00	1,100.00
B-777-200LR	W	492,000	777.36	1,499.61	49.21	458.43	1,535.87	1,603.21	1,603.21	1,118.88	292.00	1,153.88	292.00	438.00	584.00	1,168.00
B-777 Freighter	W	575,000	908.50	0.00	0.00	0.00	0.00	0.00	0.00	0.00	292.00	35.00	292.00	438.00	584.00	1,168.00
B-777-300	W	524,000	827.92	2,142.30	70.30	654.90	2,194.10	2,290.30	2,290.30	1,598.40	319.00	1,633.40	319.00	478.50	638.00	1,276.00
B-777-300ER	W	554,000	875.32	2,055.45	67.45	628.35	2,105.15	2,197.45	2,197.45	1,533.60	339.00	1,568.60	339.00	508.50	678.00	1,356.00
B-787-8	W	380,000	600.40	1,430.13	46.93	437.19	1,464.71	1,528.93	1,528.93	1,067.04	241.00	1,102.04	241.00	361.50	482.00	964.00
B787-9	W	425,000	671.50	1,459.08	47.88	446.04	1,494.36	1,559.88	1,559.88	1,088.64	267.00	1,123.64	267.00	400.50	534.00	1,068.00
B787-10	W	445,000	703.10	1,870.17	61.37	571.71	1,915.39	1,999.37	1,999.37	1,395.36	291.00	1,430.36	291.00	436.50	582.00	1,164.00

MIAMI-DADE AVIATION DEPARTMENT
AVIATION CHARGES AT MIAMI INTERNATIONAL AIRPORT
Effective October 1, 2014 - September 30, 2015
Based on \$1.58 per 1,000 Pounds of Nominal Gross Landed Weight

Aircraft Type		Landing Weight	Landing Charges	All Airlines Domestic Arrival	All Departing CUTE Gates	RENTAL FEE	All Airlines International Departure	All Airlines International Arrival	GAC International Arrival	GAC DOMESTIC Arriv/Dep	GAC/Remote Fuel Stop	Terminal Fuel Stop	1-5 Days	6-15 Days	16-30 Days	31+ Days
BOEING BUSINESS JET BBJ	N	134,000	211.72	144.75	4.75	44.25	148.25	154.75	154.75	108.00	85.00	143.00	85.00	127.50	170.00	340.00
BOEING BUSINESS JET BBJ2	N	146,000	230.68	144.75	4.75	44.25	148.25	154.75	154.75	108.00	100.00	143.00	100.00	150.00	200.00	400.00
BOMBARDIER700 GLOBAL EXPRESS	C	79,000	124.82	104.22	3.42	31.86	106.74	111.42	111.42	77.76	60.00	112.76	60.00	90.00	120.00	240.00
CHALLENGER300	C	34,000	53.72	46.32	1.52	14.16	47.44	49.52	49.52	34.56	29.00	69.56	29.00	43.50	58.00	116.00
BRITTEN NORMAN (PILATUS) ISLANDER	M1	15,000	23.70	57.90	1.90	17.70	59.30	61.90	61.90	43.20	11.00	78.20	11.00	16.50	22.00	44.00
CANADAIR REGIONAL JET RJ100 (CL65)	N	45,000	71.10	289.50	9.50	88.50	296.50	309.50	309.50	216.00	41.00	251.00	41.00	61.50	82.00	164.00
CANADAIR REGIONAL JET RJ200/200LR	N	47,000	74.26	289.50	9.50	88.50	296.50	309.50	309.50	216.00	40.00	251.00	40.00	60.00	80.00	160.00
CANADAIR REGIONAL JET RJ700	N	67,000	105.86	405.30	13.30	123.90	415.10	433.30	433.30	302.40	54.00	337.40	54.00	81.00	108.00	216.00
CANADAIR REGIONAL JET CRJ900	N	74,000	116.92	440.04	14.44	134.52	450.68	470.44	470.44	328.32	60.00	363.32	60.00	90.00	120.00	240.00
CANADAIR CHALLENGER CL-600, 601		33,000	52.14	69.48	2.28	21.24	71.16	74.28	74.28	51.84	29.00	86.84	29.00	43.50	58.00	116.00
CANADAIR CL-44 & 44J		175,000	276.50	0.00	0.00	0.00	0.00	0.00	0.00	0.00	142.00	35.00	142.00	213.00	284.00	568.00
CANADAIR CL-415		37,000	58.46	0.00	0.00	0.00	0.00	0.00	0.00	0.00	40.00	35.00	40.00	60.00	80.00	160.00
CHALLENGER 850		47,000	74.26	81.06	2.66	24.78	83.02	86.66	86.66	60.48	40.00	95.48	40.00	60.00	80.00	160.00
CASA C-212-100/300/400 (AVIOCAR)		17,000	26.86	150.54	4.94	46.02	154.18	160.94	160.94	112.32	18.00	147.32	18.00	27.00	36.00	72.00
CASA CN-235-300		36,000	56.88	260.55	8.55	79.65	266.85	278.55	278.55	194.40	39.00	229.40	39.00	58.50	78.00	156.00
CBA-123 (EMBRAER-FAMA/ARGEN.)		16,000	25.28	110.01	3.61	33.63	112.67	117.61	117.61	82.08	23.00	117.08	23.00	34.50	46.00	92.00
CESSNA (ALL 100 SERIES)	M1	15,000	23.70	23.16	0.76	7.08	23.72	24.76	24.76	17.28	11.00	52.28	11.00	16.50	22.00	44.00
CESSNA (ALL 200 SERIES)	M1	15,000	23.70	34.74	1.14	10.62	35.58	37.14	37.14	25.92	11.00	60.92	11.00	16.50	22.00	44.00
CESSNA (ALL 300-400 SERIES)	M1	15,000	23.70	46.32	1.52	14.16	47.44	49.52	49.52	34.56	11.00	69.56	11.00	16.50	22.00	44.00
CITATION S, I & II		15,000	23.70	46.32	1.52	14.16	47.44	49.52	49.52	34.56	13.00	69.56	13.00	19.50	26.00	52.00
CITATION III, VI, VII		20,000	31.60	52.11	1.71	15.93	53.37	55.71	55.71	38.88	20.00	73.88	20.00	30.00	40.00	80.00
CITATION V		15,000	23.70	46.32	1.52	14.16	47.44	49.52	49.52	34.56	17.00	69.56	17.00	25.50	34.00	68.00
CITATION X		31,000	48.98	69.48	2.28	21.24	71.16	74.28	74.28	51.84	26.00	86.84	26.00	39.00	52.00	104.00
C-17 GLOBEMASTER	W	580,000	916.40	0.00	0.00	0.00	0.00	0.00	0.00	0.00	194.00	35.00	194.00	291.00	388.00	776.00
C-5 GALAXY	J	636,000	1,004.88	0.00	0.00	0.00	0.00	0.00	0.00	0.00	353.00	35.00	353.00	529.50	706.00	1,412.00
CRJ1000	N	82,000	129.56	602.16	19.76	184.08	616.72	643.76	643.76	449.28	73.00	484.28	73.00	109.50	146.00	292.00
CESSNA (CITATION SOVEREIGN C680)		27,000	42.66	46.32	1.52	14.16	47.44	49.52	49.52	34.56	26.00	69.56	26.00	39.00	52.00	104.00
CS100	N	112,000	176.96	636.90	20.90	194.70	652.30	680.90	680.90	475.20	87.00	510.20	87.00	130.50	174.00	348.00
CS300	N	127,000	200.66	781.65	25.65	238.95	800.55	835.65	835.65	583.20	96.00	618.20	96.00	144.00	192.00	384.00
CITATION C560XL		19,000	30.02	63.69	2.09	19.47	65.23	68.09	68.09	47.52	19.00	82.52	19.00	28.50	38.00	76.00
CURTISS C-46		46,000	72.68	358.98	11.78	109.74	367.66	383.78	383.78	267.84	54.00	302.84	54.00	81.00	108.00	216.00
CV-240 (C-131)		40,000	63.20	248.97	8.17	76.11	254.99	266.17	266.17	185.76	45.00	220.76	45.00	67.50	90.00	180.00
CV-340/440/600		47,000	74.26	260.55	8.55	79.65	266.85	278.55	278.55	194.40	55.00	229.40	55.00	82.50	110.00	220.00
CV-580/640		52,000	82.16	260.55	8.55	79.65	266.85	278.55	278.55	194.40	56.00	229.40	56.00	84.00	112.00	224.00
DA20	M1	15,000	23.70	11.58	0.38	3.54	11.86	12.38	12.38	8.64	11.00	43.64	11.00	16.50	22.00	44.00
DA40	M1	15,000	23.70	23.16	0.76	7.08	23.72	24.76	24.76	17.28	11.00	52.28	11.00	16.50	22.00	44.00
DA42	M1	15,000	23.70	23.16	0.76	7.08	23.72	24.76	24.76	17.28	11.00	52.28	11.00	16.50	22.00	44.00
DC-3 (C-47)		27,000	42.66	179.49	5.89	54.87	183.83	191.89	191.89	133.92	40.00	168.92	40.00	60.00	80.00	160.00
DC-4 (C-54)	N	63,000	99.54	254.76	8.36	77.88	260.92	272.36	272.36	190.08	72.00	225.08	72.00	108.00	144.00	288.00
DC-6 (C-118)	N	88,000	139.04	445.83	14.63	136.29	456.61	476.63	476.63	332.64	81.00	367.64	81.00	121.50	162.00	324.00
DC-7 ALL	N	102,000	161.16	526.89	17.29	161.07	539.63	563.29	563.29	393.12	86.00	428.12	86.00	129.00	172.00	344.00
DC-8-51/52/53	N	207,000	327.06	978.51	32.11	299.13	1,002.17	1,046.11	1,046.11	730.08	141.00	765.08	141.00	211.50	282.00	564.00
DC-8-54/55	N	240,000	379.20	978.51	32.11	299.13	1,002.17	1,046.11	1,046.11	730.08	141.00	765.08	141.00	211.50	282.00	564.00
DC-8-61/71	N	249,000	393.42	1,100.10	36.10	336.30	1,126.70	1,176.10	1,176.10	820.80	175.00	855.80	175.00	262.50	350.00	700.00
DC-8-62/72	N	245,000	387.10	966.93	31.73	295.59	990.31	1,033.73	1,033.73	721.44	154.00	756.44	154.00	231.00	308.00	616.00
DC-8-63/73	N	275,000	434.50	1,198.53	39.33	366.39	1,227.51	1,281.33	1,281.33	894.24	183.00	929.24	183.00	274.50	366.00	732.00
DC-9-14/15 (SERIES 10)	N	82,000	129.56	486.36	15.96	148.68	498.12	519.96	519.96	362.88	61.00	397.88	61.00	91.50	122.00	244.00
DC-9-30/32/33/34 (SERIES 30)	N	99,000	156.42	584.79	19.19	178.77	598.93	625.19	625.19	436.32	73.00	471.32	73.00	109.50	146.00	292.00
DC-9-41 (SERIES 40)	N	102,000	161.16	579.00	19.00	177.00	593.00	619.00	619.00	432.00	77.00	467.00	77.00	115.50	154.00	308.00
DC-9-51 (SERIES 50)	N	110,000	173.80	694.80	22.80	212.40	711.60	742.80	742.80	518.40	82.00	553.40	82.00	123.00	164.00	328.00
DC-9-81 (MD-81)	N	128,000	202.24	845.34	27.74	258.42	865.78	903.74	903.74	630.72	105.00	665.72	105.00	157.50	210.00	420.00
DC-9-82 (MD-82)	N	130,000	205.40	862.71	28.31	263.73	883.57	922.31	922.31	643.68	105.00	678.68	105.00	157.50	210.00	420.00
DC-9-83 (MD-83)	N	139,000	219.62	891.66	29.26	272.58	913.22	953.26	953.26	665.28	105.00	700.28	105.00	157.50	210.00	420.00
DC-9-87 (MD-87)	N	130,000	205.40	631.11	20.71	192.93	646.37	674.71	674.71	470.88	92.00	505.88	92.00	138.00	184.00	368.00
DC-10-10/10CF/15	W	363,000	573.54	1,748.58	57.38	534.54	1,790.86	1,869.38	1,869.38	1,304.64	186.00	1,339.64	186.00	279.00	372.00	744.00
DC-10-30/40	W	403,000	636.74	1,580.67	51.87	483.21	1,618.89	1,689.87	1,689.87	1,179.36	196.00	1,214.36	196.00	294.00	392.00	784.00
DC-10-30F/30CF	W	436,000	688.88	0.00	0.00	0.00	0.00	0.00	0.00	0.00	197.00	35.00	197.00	295.50	394.00	788.00
DHC-6 TWIN OTTER	M1	15,000	23.70	115.80	3.80	35.40	118.60	123.80	123.80	86.40	11.00	121.40	11.00	16.50	22.00	44.00
DHC-7 -DASH 7		45,000	71.10	289.50	9.50	88.50	296.50	309.50	309.50	216.00	49.00	251.00	49.00	73.50	99.00	198.00
DHC-8-100 DASH 8		35,000	55.30	214.23	7.03	65.49	219.41	229.03	229.03	159.84	41.00	194.84	41.00	61.50	82.00	164.00
DHC-8-200 DASH 8		35,000	55.30	214.23	7.03	65.49	219.41	229.03	229.03	159.84	41.00	194.84	41.00	61.50	82.00	164.00
DHC-8-300 DASH 8		42,000	66.36	289.50	9.50	88.50	296.50	309.50	309.50	216.00	50.00	251.00	50.00	75.00	100.00	200.00
DHC-8-400 DASH 8		62,000	97.96	405.30	13.30	123.90	415.10	433.30	433.30	302.40	66.00	337.40	66.00	99.00	132.00	264.00

FINAL

MIAMI-DADE AVIATION DEPARTMENT
 AVIATION CHARGES AT MIAMI INTERNATIONAL AIRPORT
 Effective October 1, 2014 - September 30, 2015
 Based on \$1.58 per 1,000 Pounds of Nominal Gross Landed Weight

Aircraft Type		Landing Weight	Landing Charges	All Airlines Domestic Arrival	All Departing Cuts Gates	CUTE RENTAL FEE	All Airlines Departure	All Airlines International Arrival	GAC International Arrival	GAC DOMESTIC Arriv/Dep	GAC/Remote Fuel Stop	Terminal Fuel Stop	1-5 Days	6-15 Days	16-30 Days	31+ Days
DORNIER 328		27,000	42.66	173.70	5.70	53.10	177.90	185.70	185.70	129.60	32.00	164.60	32.00	48.00	64.00	128.00
ECLIPSE AVIATION EA500	M1	15,000	23.70	46.32	1.52	14.16	47.44	49.52	49.52	34.56	11.00	69.56	11.00	16.50	22.00	44.00
EMBRAER EMB-110 (BANDEIRANTE)		15,000	23.70	110.01	3.61	33.63	112.67	117.61	117.61	82.08	16.00	117.08	16.00	24.00	32.00	64.00
EMBRAER EMB-120 (BRASILIA)		26,000	41.08	173.70	5.70	53.10	177.90	185.70	185.70	129.60	28.00	164.60	28.00	42.00	56.00	112.00
EMBRAER ERJ-135 & 135ER		41,000	64.78	214.23	7.03	65.49	219.41	229.03	229.03	159.84	37.00	194.84	37.00	55.50	74.00	148.00
EMBRAER ERJ-140		41,000	64.78	254.76	8.36	77.88	260.92	272.36	272.36	190.08	40.00	225.08	40.00	60.00	80.00	160.00
EMBRAER ERJ 145		42,000	66.36	289.50	9.50	88.50	296.50	309.50	309.50	216.00	42.00	251.00	42.00	63.00	84.00	168.00
EMBRAER ERJ-170		72,000	113.76	405.30	13.30	123.90	415.10	433.30	433.30	302.40	55.00	337.40	55.00	82.50	110.00	220.00
EMBRAER ERJ-175		75,000	118.50	440.04	14.44	134.52	450.68	470.44	470.44	328.32	58.00	363.32	58.00	87.00	116.00	232.00
EMBRAER ERJ-190-100		94,000	148.52	561.63	18.43	171.69	575.21	600.43	600.43	419.04	77.00	454.04	77.00	115.50	154.00	308.00
EMBRAER ERJ-190-200		98,000	154.84	625.32	20.52	191.16	640.44	668.52	668.52	466.56	78.00	501.56	78.00	117.00	156.00	312.00
EMBRAER ERJ-195		99,000	156.42	683.22	22.42	208.86	699.74	730.42	730.42	509.76	79.00	544.76	79.00	118.50	158.00	316.00
FAIRCHILD-DORNIER 228-212	M1	15,000	23.70	110.01	3.61	33.63	112.67	117.61	117.61	82.08	11.00	117.08	11.00	16.50	22.00	44.00
FAIRCHILD-DORNIER 328-110		29,000	45.82	191.07	6.27	58.41	195.69	204.27	204.27	142.56	31.00	177.56	31.00	46.50	62.00	124.00
FAIRCHILD-DORNIER 328JET		31,000	48.98	185.28	6.08	56.64	189.76	198.08	198.08	138.24	31.00	173.24	31.00	46.50	62.00	124.00
FAIRCHILD-MERLIN/METRO (ALL)		16,000	25.28	110.01	3.61	33.63	112.67	117.61	117.61	82.08	22.00	117.08	22.00	33.00	44.00	88.00
FALCON 10/100		18,000	28.44	46.32	1.52	14.16	47.44	49.52	49.52	34.56	13.00	69.56	13.00	19.50	26.00	52.00
FALCON 20D/20F/200		27,000	42.66	81.06	2.66	24.78	83.02	86.66	86.66	60.48	20.00	95.48	20.00	30.00	40.00	80.00
FALCON 50/500		36,000	56.88	57.90	1.90	17.70	59.30	61.90	61.90	43.20	24.00	78.20	24.00	36.00	48.00	96.00
FALCON 900		42,000	66.36	86.85	2.85	26.55	88.95	92.85	92.85	64.80	28.00	99.80	28.00	42.00	56.00	112.00
FALCON 2000		33,000	52.14	110.01	3.61	33.63	112.67	117.61	117.61	82.08	28.00	117.08	28.00	42.00	56.00	112.00
Dassault Falcon 7X		62,000	97.96	69.48	2.28	21.24	71.16	74.28	74.28	51.84	43.00	86.84	43.00	64.50	86.00	172.00
FOKKER F27 FRIENDSHIP-200/400/600		42,000	66.36	289.50	9.50	88.50	296.50	309.50	309.50	216.00	52.00	251.00	52.00	78.00	104.00	208.00
FOKKER F28-1000/2000		59,000	93.22	364.77	11.97	111.51	373.59	389.97	389.97	272.16	46.00	307.16	46.00	69.00	92.00	184.00
FOKKER F28-3000/4000	N	69,000	109.02	492.15	16.15	150.45	504.05	526.15	526.15	367.20	53.00	402.20	53.00	79.50	106.00	212.00
FOKKER F28-5000		67,000	105.86	393.72	12.92	120.36	403.24	420.92	420.92	293.76	53.00	328.76	53.00	79.50	106.00	212.00
FOKKER 50 (F27-050)		43,000	67.94	335.82	11.02	102.66	343.94	359.02	359.02	250.56	52.00	285.56	52.00	78.00	104.00	208.00
FOKKER 70 (F28-0070)		78,000	123.24	463.20	15.20	141.60	474.40	495.20	495.20	345.60	52.00	380.60	52.00	78.00	104.00	208.00
FOKKER 100 & HWO (F28-0100)	N	88,000	139.04	625.32	20.52	191.16	640.44	668.52	668.52	466.56	71.00	501.56	71.00	106.50	142.00	284.00
GRUMMAN G-111 ALBATROSS		32,000	50.56	162.12	5.32	49.56	166.04	173.32	173.32	120.96	38.00	155.96	38.00	57.00	76.00	152.00
GRUMMAN G-21 GOOSE, G-44 WIDGEON, G-73 I M1		15,000	23.70	46.32	1.52	14.16	47.44	49.52	49.52	34.56	11.00	69.56	11.00	16.50	22.00	44.00
GRUMMAN (YANKEE, TRAVELER, CHEETAH, TIGER)		15,000	23.70	46.32	1.52	14.16	47.44	49.52	49.52	34.56	38.00	69.56	38.00	57.00	76.00	152.00
GULFSTREAM 1		33,000	52.14	127.38	4.18	38.94	130.46	136.18	136.18	95.04	33.00	130.04	33.00	49.50	66.00	132.00
GULFSTREAM GALAXY (IAI GALAXY)		28,000	44.24	57.90	1.90	17.70	59.30	61.90	61.90	43.20	24.00	78.20	24.00	36.00	48.00	96.00
GULFSTREAM 11/111/IV		59,000	93.22	92.64	3.04	28.32	94.88	99.04	99.04	69.12	43.00	104.12	43.00	64.50	86.00	172.00
GULFSTREAM V		66,000	104.28	46.32	1.52	14.16	47.44	49.52	49.52	34.56	56.00	69.56	56.00	84.00	112.00	224.00
GULFSTREAM G150		22,000	34.76	46.32	1.52	14.16	47.44	49.52	49.52	34.56	21.00	69.56	21.00	31.50	42.00	84.00
GULFSTREAM G280	C	33,000	52.14	57.90	1.90	17.70	59.30	61.90	61.90	43.20	28.00	78.20	28.00	42.00	56.00	112.00
GULFSTREAM G450	C	66,000	104.28	92.64	3.04	28.32	94.88	99.04	99.04	69.12	46.00	104.12	46.00	69.00	92.00	184.00
GULFSTREAM G550	C	75,000	118.50	104.22	3.42	31.86	106.74	111.42	111.42	77.76	59.00	112.76	59.00	88.50	118.00	236.00
GULFSTREAM G650		84,000	132.72	69.48	2.28	21.24	71.16	74.28	74.28	51.84	65.00	86.84	65.00	97.50	130.00	260.00
HELICOPTERS (ALL)	M1	15,000	23.70	23.16	0.76	7.08	23.72	24.76	24.76	17.28	11.00	52.28	11.00	16.50	22.00	44.00
HERON (DH114)	M1	15,000	23.70	81.06	2.66	24.78	83.02	86.66	86.66	60.48	11.00	95.48	11.00	16.50	22.00	44.00
HAWKER 1000	C	31,000	48.98	52.11	1.71	15.93	53.37	55.71	55.71	38.88	18.00	73.88	18.00	27.00	36.00	72.00
Hawker Beechcraft 4000		34,000	53.72	46.32	1.52	14.16	47.44	49.52	49.52	34.56	28.00	69.56	28.00	42.00	56.00	112.00
HONDAJET HA-420	M1	15,000	23.70	34.74	1.14	10.62	35.58	37.14	37.14	25.92	11.00	60.92	11.00	16.50	22.00	44.00
HS125 (ALL)		23,000	36.34	46.32	1.52	14.16	47.44	49.52	49.52	34.56	15.00	69.56	15.00	22.50	30.00	60.00
HS748 (BAe 748)		38,000	60.04	289.50	9.50	88.50	296.50	309.50	309.50	216.00	45.00	251.00	45.00	67.50	90.00	180.00
IL-62/62M/62MK	N	252,000	398.16	1,059.57	34.77	323.91	1,085.19	1,132.77	1,132.77	790.56	163.00	825.56	163.00	244.50	326.00	652.00
IL-76/MD	W	334,000	527.72	0.00	0.00	0.00	0.00	0.00	0.00	0.00	165.00	35.00	165.00	247.50	330.00	660.00
IL-86	W	386,000	609.88	2,026.50	66.50	619.50	2,075.50	2,166.50	2,166.50	1,512.00	203.00	1,547.00	203.00	304.50	406.00	812.00
IL-96-300	W	386,000	609.88	1,360.65	44.65	415.95	1,393.55	1,454.65	1,454.65	1,015.20	236.00	1,050.20	236.00	354.00	472.00	944.00
IL-114		50,000	79.00	370.56	12.16	113.28	379.52	396.16	396.16	276.48	56.00	311.48	56.00	84.00	112.00	224.00
INPT CN-235-220		34,000	53.72	254.76	8.36	77.88	260.92	272.36	272.36	190.08	22.00	225.08	22.00	33.00	44.00	88.00
INPT CN-250-100		54,000	85.32	370.56	12.16	113.28	379.52	396.16	396.16	276.48	22.00	311.48	22.00	33.00	44.00	88.00
JETSTREAM 32		15,000	23.70	110.01	3.61	33.63	112.67	117.61	117.61	82.08	16.00	117.08	16.00	24.00	32.00	64.00
KELOWNA FLIGHTCRAFT CONVAIR 5800U		58,000	91.64	0.00	0.00	0.00	0.00	0.00	0.00	0.00	56.00	35.00	56.00	84.00	112.00	224.00
LAKE LA42, LA-4-260 & BUCCANEER	M1	15,000	23.70	23.16	0.76	7.08	23.72	24.76	24.76	17.28	11.00	52.28	11.00	16.50	22.00	44.00
LEARJET 20's (21, 23, 25, etc.)	M1	15,000	23.70	57.90	1.90	17.70	59.30	61.90	61.90	43.20	11.00	78.20	11.00	16.50	22.00	44.00
LEARJET 30,s(31, 35a, 36a, etc.)		16,000	25.28	57.90	1.90	17.70	59.30	61.90	61.90	43.20	14.00	78.20	14.00	21.00	28.00	56.00
LEARJET 45		19,000	30.02	57.90	1.90	17.70	59.30	61.90	61.90	43.20	14.00	78.20	14.00	21.00	28.00	56.00
LEARJET 55		16,000	25.28	57.90	1.90	17.70	59.30	61.90	61.90	43.20	14.00	78.20	14.00	21.00	28.00	56.00
LEARJET 60		20,000	31.60	57.90	1.90	17.70	59.30	61.90	61.90	43.20	14.00	78.20	14.00	21.00	28.00	56.00

MIAMI-DADE AVIATION DEPARTMENT
AVIATION CHARGES AT MIAMI INTERNATIONAL AIRPORT
Effective October 1, 2014 - September 30, 2015
Based on \$1.58 per 1,000 Pounds of Nominal Gross Landed Weight

Aircraft Type		Landing Weight	Landing Charges	All Airlines Domestic Arrival	All Departing Cuts Gates	CUTE RENTAL FEE	All Airlines Departure	All Airlines International Arrival	GAC International Arrival	GAC DOMESTIC Arriv/Dep	GAC/Remote Fuel Stop	Terminal Fuel Stop	1-5 Days	6-15 Days	16-30 Days	31+ Days
L-1329 JETSTAR I & II		36,000	56.88	75.27	2.47	23.01	77.09	80.47	80.47	56.16	22.00	91.16	22.00	33.00	44.00	88.00
L-100/L-382/C-130 HERCULES	N	135,000	213.30	0.00	0.00	0.00	0.00	0.00	0.00	0.00	98.00	35.00	98.00	147.00	196.00	392.00
LOCKHEED L-188 ELECTRA	N	96,000	151.68	474.78	15.58	145.14	486.26	507.58	507.58	354.24	76.00	389.24	76.00	114.00	152.00	304.00
L-1011 TRISTAR (ALL INCLUDING - 500):	W	368,000	581.44	1,418.55	46.55	433.65	1,452.85	1,516.55	1,516.55	1,058.40	180.00	1,093.40	180.00	270.00	360.00	720.00
LET L-420		15,000	23.70	110.01	3.61	33.63	112.67	117.61	117.61	82.08	20.00	117.08	20.00	30.00	40.00	80.00
LET-L-610G		33,000	52.14	231.60	7.60	70.80	237.20	247.60	247.60	172.80	20.00	207.80	20.00	30.00	40.00	80.00
LEARJET 85 LJ-200		31,000	48.98	46.32	1.52	14.16	47.44	49.52	49.52	34.56	28.00	69.56	28.00	42.00	56.00	112.00
MAULE (ALL)	M1	15,000	23.70	23.16	0.76	7.08	23.72	24.76	24.76	17.28	11.00	52.28	11.00	16.50	22.00	44.00
MARTIN M-202		37,000	58.46	231.60	7.60	70.80	237.20	247.60	247.60	172.80	44.00	207.80	44.00	66.00	88.00	176.00
MARTIN M-404		43,000	67.94	254.76	8.36	77.88	260.92	272.36	272.36	190.08	46.00	225.08	46.00	69.00	92.00	184.00
MD-11/-11ER	W	430,000	679.40	1,650.15	54.15	504.45	1,690.05	1,764.15	1,764.15	1,231.20	224.00	1,266.20	224.00	336.00	448.00	896.00
MD-11F	W	472,000	745.76	0.00	0.00	0.00	0.00	0.00	0.00	0.00	224.00	35.00	224.00	336.00	448.00	896.00
MD-88	N	130,000	205.40	862.71	28.31	263.73	883.57	922.31	922.31	643.68	105.00	678.68	105.00	157.50	210.00	420.00
MD-90-30	N	142,000	224.36	926.40	30.40	283.20	948.80	990.40	990.40	691.20	108.00	726.20	108.00	162.00	216.00	432.00
METRO , METRO 3/4C, 111H, EXPEDITOR (ALL)		16,000	25.28	110.01	3.61	33.63	112.67	117.61	117.61	82.08	22.00	117.08	22.00	33.00	44.00	88.00
MITSHIBISHI MU2/MU24/MU26	M1	15,000	23.70	46.32	1.52	14.16	47.44	49.52	49.52	34.56	11.00	69.56	11.00	16.50	22.00	44.00
MOONEY (ALL)	M1	15,000	23.70	23.16	0.76	7.08	23.72	24.76	24.76	17.28	11.00	52.28	11.00	16.50	22.00	44.00
RAJ90	C	84,000	132.72	532.68	17.48	162.84	545.56	569.48	569.48	397.44	74.00	432.44	74.00	111.00	148.00	296.00
NAVION (ALL)	M1	15,000	23.70	23.16	0.76	7.08	23.72	24.76	24.76	17.28	11.00	52.28	11.00	16.50	22.00	44.00
NORD 262A/B/C/D (FREGAT & MOHAWK 296)		23,000	36.34	167.91	5.51	51.33	171.97	179.51	179.51	125.28	30.00	160.28	30.00	45.00	60.00	120.00
LOCKHEED P3 ORION	N	96,000	151.68	474.78	15.58	145.14	486.26	507.58	507.58	354.24	76.00	389.24	76.00	114.00	152.00	304.00
PIAGGIO P180		15,000	23.70	52.11	1.71	15.93	53.37	55.71	55.71	38.88	14.00	73.88	14.00	21.00	28.00	56.00
EMBRAER PHENOM 100	C	15,000	23.70	34.74	1.14	10.62	35.58	37.14	37.14	25.92	11.00	60.92	11.00	16.50	22.00	44.00
EMBRAER PHENOM 300		17,000	26.86	34.74	1.14	10.62	35.58	37.14	37.14	25.92	18.00	60.92	18.00	27.00	36.00	72.00
PILATUS PC-6 (TURBO PORTER BC2-H4)	M1	15,000	23.70	57.90	1.90	17.70	59.30	61.90	61.90	43.20	11.00	78.20	11.00	16.50	22.00	44.00
PILATUS AIRCRAFT PC-12U (PC12/45)	M1	15,000	23.70	57.90	1.90	17.70	59.30	61.90	61.90	43.20	11.00	78.20	11.00	16.50	22.00	44.00
PIPER SINGLE ENGINE EXCEPT MALIBU	M1	15,000	23.70	23.16	0.76	7.08	23.72	24.76	24.76	17.28	11.00	52.28	11.00	16.50	22.00	44.00
PIPER (MALIBU & ALL TWIN ENGINE	M1	15,000	23.70	46.32	1.52	14.16	47.44	49.52	49.52	34.56	11.00	69.56	11.00	16.50	22.00	44.00
PITTS (ALL)	M1	15,000	23.70	11.58	0.38	3.54	11.86	12.38	12.38	8.64	11.00	43.64	11.00	16.50	22.00	44.00
ROCKWELL (ALL AERO COMMANDER SERIES M1		15,000	23.70	46.32	1.52	14.16	47.44	49.52	49.52	34.56	11.00	69.56	11.00	16.50	22.00	44.00
ROCKWELL SABERLINER (ALL)		20,000	31.60	57.90	1.90	17.70	59.30	61.90	61.90	43.20	16.00	78.20	16.00	24.00	32.00	64.00
Saab 340A		28,000	44.24	104.22	3.42	31.86	106.74	111.42	111.42	77.76	30.00	112.76	30.00	45.00	60.00	120.00
SAAB-340 Except 340A		28,000	44.24	173.70	5.70	53.10	177.90	185.70	185.70	129.60	30.00	164.60	30.00	45.00	60.00	120.00
SAAB 2000		48,000	75.84	196.86	6.46	60.18	201.62	210.46	210.46	146.88	47.00	181.88	47.00	70.50	94.00	188.00
SABERLINER , ROCKWELL (ALL)		20,000	31.60	57.90	1.90	17.70	59.30	61.90	61.90	43.20	16.00	78.20	16.00	24.00	32.00	64.00
SHORTS 330 (SD3-30)		23,000	36.34	173.70	5.70	53.10	177.90	185.70	185.70	129.60	28.00	164.60	28.00	42.00	56.00	112.00
SHORTS 360 (SD3-60)		27,000	42.66	208.44	6.84	63.72	213.48	222.84	222.84	155.52	35.00	190.52	35.00	52.50	70.00	140.00
SR2022	M1	15,000	23.70	23.16	0.76	7.08	23.72	24.76	24.76	17.28	11.00	52.28	11.00	16.50	22.00	44.00
SSJ100-95		90,000	142.20	538.47	17.67	164.61	551.49	575.67	575.67	401.76	59.00	436.76	59.00	88.50	118.00	236.00
SWERINGEN MERLIN	M1	15,000	23.70	46.32	1.52	14.16	47.44	49.52	49.52	34.56	11.00	69.56	11.00	16.50	22.00	44.00
TRISLANDER (SEE PILATUS AIRCRAFT)	M1	15,000	23.70	81.06	2.66	24.78	83.02	86.66	86.66	60.48	11.00	95.48	11.00	16.50	22.00	44.00
TU-134/134A	N	95,000	150.10	486.36	15.96	148.68	498.12	519.96	519.96	362.88	76.00	397.88	76.00	114.00	152.00	304.00
TU-144 (CHARGER)	N	396,000	625.68	810.60	26.60	247.80	830.20	866.60	866.60	604.80	131.00	639.80	131.00	196.50	262.00	524.00
TU-154/-154M	N	176,000	278.08	995.88	32.68	304.44	1,019.96	1,064.68	1,064.68	743.04	70.00	778.04	70.00	105.00	140.00	280.00
TU-204	N	190,000	300.20	1,140.63	37.43	348.69	1,168.21	1,219.43	1,219.43	851.04	137.00	886.04	137.00	205.50	274.00	548.00
TU-304	N	539,000	851.62	1,806.48	59.28	552.24	1,850.16	1,931.28	1,931.28	1,347.84	127.00	1,382.84	127.00	190.50	254.00	508.00
TU-330	N	200,000	316.00	0.00	0.00	0.00	0.00	0.00	0.00	0.00	127.00	35.00	127.00	190.50	254.00	508.00
TU-334-100	N	95,000	150.10	590.58	19.38	180.54	604.86	631.38	631.38	440.64	127.00	475.64	127.00	190.50	254.00	508.00
TU-334-100D	N	120,000	189.60	590.58	19.38	180.54	604.86	631.38	631.38	440.64	127.00	475.64	127.00	190.50	254.00	508.00
TU-354	N	121,000	191.18	729.54	23.94	223.02	747.18	779.94	779.94	544.32	127.00	579.32	127.00	190.50	254.00	508.00
YAK-40		37,000	58.46	208.44	6.84	63.72	213.48	222.84	222.84	155.52	36.00	190.52	36.00	54.00	72.00	144.00
YAK-42	N	114,000	180.12	486.36	15.96	148.68	498.12	519.96	519.96	362.88	88.00	397.88	88.00	132.00	176.00	352.00
YS-11		52,000	82.16	370.56	12.16	113.28	379.52	396.16	396.16	276.48	60.00	311.48	60.00	90.00	120.00	240.00
VISCOUNT (VICKERS 700/700D)		54,000	85.32	364.77	11.97	111.51	373.59	389.97	389.97	272.16	153.00	307.16	153.00	229.50	306.00	612.00
WESTWIND III/ASTRA		17,000	26.86	75.27	2.47	23.01	77.09	80.47	80.47	56.16	15.00	91.16	15.00	22.50	30.00	60.00
WESTWIND ASTRA SPX		21,000	33.18	46.32	1.52	14.16	47.44	49.52	49.52	34.56	20.00	69.56	20.00	30.00	40.00	80.00

AIRCRAFT UNDER 15,000 POUNDS
CLASS WEIGHT

M-1	0 - 15,000 LBS	15,000	23.70	46.32	1.52	14.16	47.44	49.52	49.52	34.56	11.00	69.56	11.00	16.50	22.00	44.00
-----	----------------	--------	-------	-------	------	-------	-------	-------	-------	-------	-------	-------	-------	-------	-------	-------

TERMINAL TAB

AIRLINE ACTIVITY BASED FEES CALCULATION MIAMI INTERNATIONAL AIRPORT FOR FISCAL YEARS ENDING SEPTEMBER 30,

CONCOURSE USE FEE CALCULATION

		<u>FY 2013-14</u>	<u>FY 2014-15</u>
Domestic Concourse Airline Sq. Ft.	[A]	1,193,697	1,193,697
International Concourse Airline Sq. Ft.	[B]	1,456,176	1,456,176
Total Concourse Airline Square Feet	[C=A+B]	2,649,873	2,649,873
Class III Terminal Rental Rate	[D]	\$79.92	\$83.05
Equivalent Concourse Rent	[E=CxD]	\$211,777,850	\$220,071,953
Total Arriving/Departing Seats	[F]	49,000,000	51,000,000
Fee per Seat	[E/F]	\$4.32	\$4.32

BAGGAGE CLAIM FEE CALCULATION

Baggage Claim Square Feet	[A]	194,672	194,672
Class III Terminal Rental Rate	[B]	\$79.92	\$83.05
Equivalent Rent	[C=AxB]	\$15,558,186	\$16,167,510
Baggage Claim Equipmt & Maintenance Costs	[D]	3,694,468	3,312,345
Total for Recovery	[E=C+D]	\$19,252,654	\$19,479,855
Domestic Arriving Seats	[F]	13,137,529	13,254,500
Fee per Seat	[E/F]	\$1.47	\$1.47

SCREENING USE FEE CALCULATION

Screening Costs		12,701,057	\$12,379,495
Less: Reimbursement from TSA		-500,000	(500,000)
	[A]	\$12,201,057	\$11,879,495
Total Departing Seats	[B]	24,968,585	25,958,292
Fee per Seat	[A/B]	\$0.49	\$0.46

INTERNATIONAL FACILITIES USE FEE CALCULATION

International Facilities Costs	[A]	\$18,078,821	\$19,408,749
QAS Porter Service Equipment Reimbursement	[B]	\$0	0
	[C=A+B]	\$18,078,821	\$19,408,749
International Inbound - Class IV - South Terminal	[D]	16,995	16,995
International Inbound - Class IV - North Terminal	[E]	47,240	47,240
	[F=D+E]	64,235	64,235
Class IV Terminal Rental Rate	[G]	39.96	\$41.53
International Inbound Costs	[H=FxG]	\$2,566,831	\$2,667,680
International Facilities and Inbound Costs	[I=C+H]	\$20,645,651	\$22,076,429
International Arriving Seats	[J]	10,893,886	11,787,208
Fee per Seat	[I/J]	\$1.90	\$1.87

TERMINAL RENTAL RATES CALCULATION MIAMI INTERNATIONAL AIRPORT FOR FISCAL YEARS ENDING SEPTEMBER 30,

AVERAGE (CLASS III) TERMINAL RENTAL RATE CALCULATION

		FY 2013-14	FY 2014-15
Terminal Rent Requirement	[A]	\$417,026,986	\$429,995,805
Weighted Revenue Sq. Ft.	[B]	5,217,826	5,177,362
Class III Rate per Sq. Ft.	[A/B]	\$79.92	\$83.05

WEIGHTED RENTAL RATES CALCULATION

Type of Space	Class III Rate	Weight Factor	Rate	Airline Rented Space	Total Airline Revenue
	[A]	[B]	[C=AxB]	[D]	[CxD]
<u>FY 2013-14</u>					
Class I	\$79.92	2.00	\$159.84	15,173	\$2,425,252
Class II	\$79.92	1.50	119.88	126,447	15,158,466
Class III	\$79.92	1.00	79.92	235,790	18,844,337
Class IV	\$79.92	0.50	39.96	214,592	8,575,096
Class V	\$79.92	0.25	19.98	12,656	252,867
Class VI	\$79.92	1.00	79.92	3,956	316,164
				608,614	\$45,572,182
<u>FY 2014-15</u>					
Class I	\$83.05	1.00	\$83.05	15,486	\$1,286,112
Class II	83.05	1.50	124.58	126,725	15,787,401
Class III	83.05	1.00	83.05	237,711	19,741,899
Class IV	83.05	0.50	41.53	214,609	8,912,712
Class V	83.05	0.25	20.76	12,656	262,739
Class VI	83.05	1.00	83.05	3,946	327,715
				611,133	\$46,318,577

CUTE RATES MIAMI INTERNATIONAL AIRPORT FY 2015

CUTE Gate Rates

- Infrastructure Fee—**\$0.02 per departing seat**
- Gate Usage Fee (CUTE Equipment Rental)—**\$0.19 per departing seat**

Ticket Counter Usage Fee – The Aviation Department began recovering CUTE costs through departing seats effective Oct. 1, 2014.

	<u>Fee per Departing Seat</u>	<u>Fee per ticket counter hour *</u>
CUTE Equipment Rental	\$0.57	\$5.59
Class I Rental Expense for Ticket Counter	0.37	3.67
Class IV Rental Expense for Baggage Makeup	0.80	8.63
CUTE Dynamic Signage (Back-wall Displays)	<u>0.03</u>	<u>0.29</u>
Total	<u>\$1.77</u>	<u>\$18.18</u>

Maximum daily rate per ticket counter - **\$218.16 (12 hours multiplied by Ticket Counter Usage Fee)***

* Applies to CUTE-exempt carriers only

CUTE Dynamic Signage (Back-wall Displays)

- Maximum monthly rate - **\$50.00 per ticket counter position.**
- Annual rate for back-wall displays located within leased areas - **\$1,200.00 per display.**

CUTE Back-office / Operations / Educational Equipment – the monthly charge will apply to vendor-maintained CUTE equipment located in leased areas. Wiring and cabling installation will be charged separately.

- **Monthly Charge per Unit - \$218.69**

Manual CUTE Ticket Counter Rates

Rates apply to airlines that use the CUTE ticket counters but process their passengers manually. This rate applies to General Aeronautical Service Permittee (GASPer) who process airlines that do not have a Terminal Agreement with MDAD.

- **Standard Manual Rate -**
 - * **Wide-body aircraft (over 200 seats) - \$509.00 per flight**
Based on seven ticket counters at four hours each = 7 x 4 x hourly ticket counter usage fee of \$18.18
 - * **Narrow aircraft (101 seats through 200 seats) - \$290.86 per flight**
Based on four ticket counters at four hours each = 4 x 4 x hourly ticket counter usage fee of \$18.18
 - * **Regional Commuter aircraft (20 seats through 100 seats) - \$145.43 per flight**
Based on two ticket counters at four hours each = 2 x 4 x hourly ticket counter usage fee of \$18.18
 - * **Small Turbo aircraft (under 20 seats) - \$72.71 per flight**
Based on two ticket counters at four hours each = 1 x 4 x hourly ticket counter usage fee of \$18.18
- **Unauthorized Manual Rate** – Airline is charged unauthorized rates if the CUTE system was available and they did not use it.
 - * **Wide-body aircraft (over 200 seats) - \$1,018.00 per flight**
Based on seven ticket counters at four hours each = 7 x 4 x hourly ticket counter usage fee of \$18.18 + 100% premium
 - * **Narrow aircraft (101 seats through 200 seats) - \$581.71 per flight**
Based on four ticket counters at four hours each = 4 x 4 x hourly ticket counter usage fee of \$18.18 + 100% premium
 - * **Regional Commuter aircraft (20 seats through 100 seats) - \$290.86 per flight**
Based on four ticket counters at four hours each = 2 x 4 x hourly ticket counter usage fee of \$18.18 + 100% premium
 - * **Small Turbo aircraft (under 20 seats) - \$145.43 per flight**
Based on four ticket counters at four hours each = 1 x 4 x hourly ticket counter usage fee of \$18.18 + 100% premium

CUTE RATES

MIAMI INTERNATIONAL AIRPORT FY 2015

Miscellaneous CUTE Charges

Hourly Charges (TWOV lounges, ITI lounges, ITI baggage, and Ramp Baggage Make-up) - the fee shall be \$5.59 per hour for each respective area effective October 1, 2014.

Cruise Check-In Facility at Miami Seaport maintenance charges (added to CUTE hourly usage fees) – on-site maintenance single circuit is \$10.00 per hour with back-up circuit at \$10.34 per hour. For on-call maintenance (response within two hours) the fee is \$3.16 per hour for single circuit and \$3.51 per hour for back-up circuit.

CUTE Rate Based on Departing Aircraft Seat – A CUTE rate of \$1.77 per departing aircraft seat will be charged to non-exempt carriers effective October 1, 2014.

CUSS Charges (Common Use Self Service)

Per Transaction Fee – the fee shall be \$0.58 per transaction at all Miami-Dade Aviation Department common use CUSS units.

Monthly Fee (Desktop Unit) – The fee shall be **\$59.79 per unit, per month.** Includes hardware/software costs and operation & maintenance costs.

Monthly Fee (Standalone Unit) – The fee shall be **\$101.31 per unit, per month.** Includes hardware/software costs, 6 sq ft of class I space at current rate and operation & maintenance costs.

Closed-Circuit Television (CCTV)

Cameras

- PTZ (Pan-Tilt-Zoom) \$24.00 each, per month
- Fixed \$16.00 each, per month

Viewing/Workstations

- Cellstack/NICE (1) \$614.00 each, per month
- Cellstack (2) \$553.00 each, per month
- NICE (3) \$461.00 each, per month

Recording – Per Port

- NICE Pro (30-day recording) \$14.00 each, per month
- NICE Harmony (20-day recording) \$9.00 each, per month

(1) *Required for recording*

(2) *Digital quality viewing without recording capability*

(3) *Standard quality viewing without recording capability*

**CALCULATION OF CUTE FEES
MIAMI-DADE AVIATION DEPARTMENT
For Fiscal Year Ending September 30**

		Budget			
		FY2014	FY2015		
Infrastructure Fee (included in Concourse Use Fee)					
Operating Costs		\$ 1,206,802	\$ 482,721		
Equipment Costs (Core Room Hardware/Servers)		-	-		
	[A]	\$ 1,206,802	\$ 482,721		
All Departing Seats Estimate	[B]	24,495,289	25,500,504		
Cost per Departing Seat	[A/B]	\$ 0.05	\$ 0.02		
Gate Usage Fee					
Operating Costs		\$ 863,480	\$ 1,036,175		
Training Cost Allocation (5)		41,482	47,201		
Telecom Charges		30,672	30,672		
Total Costs	[C]	\$ 935,634	\$ 1,114,049		
CUTE Airlines Departing Seats Estimate	[D]	6,011,298	5,754,426		
Gate Usage Fee per Departing Seat	[C/D]	\$ 0.16	\$ 0.19		
Ticket Counter Usage Fee					
Operating Costs	[a]	\$ 2,625,711	\$ 3,150,854		
Training Cost Allocation (5)	[a]	124,040	141,142		
Telecom Charges	[a]	63,504	63,504		
Ticket Counter Terminal Space Cost		3,844,088	2,201,024		
CUTE Class I Terminal Space (sq. ft.) (1)		30,062	33,128		
x Class I Terminal Rental Rate		\$ 159.84	\$83.05		
x Vacancy Factor applied to CUTE Class I sq ft		20%	20%		
Outbound Bag Makeup Terminal Space (sq. ft.)		4,567,308	4,746,754		
CUTE Class IV Terminal Space in sq ft.		114,297	114,297		
x Class IV Terminal Rental Rate		\$ 39.96	\$ 41.53		
Total Ticket Counter CUTE Costs	[E]	\$ 11,224,651	\$10,303,278		
CUTE Ticket Counter Hours Estimate (2)	[F]	600,000	600,000		
CUTE Ticket Counter Hours Estimate without Outbd BMU (3)	[G]	550,000	550,000		
		Hourly	Hourly	Per Seat (6)	
Ticket Counter Usage Fee	[E/F]	\$ 19.40	\$ 17.89	\$ 1.77	
Ticket Counter Usage Fee W/O OUTBOUND BMU	[E/G]	\$ 11.10	\$ 9.26	\$ 0.97	
Hourly Eqpmt Fee Chg for VIP Lounge	[a/F]	\$ 4.69	\$ 5.59	n/a	
VIP Lounge Eqpmt Monthly Charge Cap (4)		\$ 812.72	\$ 969.37	n/a	
Airline Back Office / Operations Eqpmt Monthly Charge		\$ 182.24	\$ 218.69	n/a	
Common Use Display Charge					
Operating Costs		\$ 172,330	\$ 172,330	\$ 172,330	
CUTE Ticket Counter Hours (2) or Seats Estimate	[H]	600,000	600,000	5,754,426	
Display Charge per Position	[G/H]	\$ 0.29	\$ 0.29	\$ 0.03	
Exempt Airline Monthly Charge Cap		\$ 50.00	\$ 50.00	n/a	

(1) Increase in FY2015 CUTE ticket counter space is due to reopening of terminal E ticket counters previously under construction.

(2) Based on an average of 4 hours per day per ticket counter position for 360 days.

(3) Same assumptions as footnote # (3) above, but excludes the CUTE ticket counter positions that feed to the AA/NTD baggage system.

(4) Based on hourly equipment rate multiplied by 40 hours per week multiplied by 52 weeks per year (2,080 hrs) divided by 12 months.

(5) Training costs include MDAD Training Room space rental at Class III rates, effective FY 2012.

(6) Effective Oct. 1, 2014 MDAD began charging non-exempt carriers for ticket counter usage based on departing seats.

LANDSIDE TAB

**PUBLIC AND EMPLOYEE PARKING
AT MIAMI INTERNATIONAL AIRPORT
AS OF OCTOBER 1, 2014**

Public Parking

Miami International Airport's parking facilities consist of two multi-level parking garages, identified as the DOLPHIN GARAGE and the FLAMINGO GARAGE.

Standard Parking Rates:

- \$2.00 for each 20 minute increment or part thereof to a maximum of \$17.00 per day.

Valet Parking:

- \$18.00 for the first 1-3 hours or part thereof. After 3 hours, the daily maximum will be \$30.00 per day.

Parking Space Reservation Charge:

- **\$10.00 per vehicle parking space.** This is a prepaid fee and charged in addition to existing vehicle parking rates. The space reservation expires when vehicle exits the reserved parking space.

Terminal

Both the DOLPHIN GARAGE and the FLAMINGO GARAGE connect to the Terminal Building by moving sidewalks, located on the 3rd level of the garages.

Disabled Parking

Designated disabled permit parking and stroller permit parking is available on the 3rd level of the garages.

Over-height Vehicles

Over-height vehicles may use the "High-Vehicle" surface lot parking area located adjacent to the East side of the DOLPHIN GARAGE.

**PUBLIC AND EMPLOYEE PARKING
AT MIAMI INTERNATIONAL AIRPORT
AS OF OCTOBER 1, 2014**

Employee Parking

Employee Parking Decals - the fee shall be **\$30.00 per decal per month**. (Park 8 and Employee Parking Lot)

Motorcycle Parking Fee – the fee shall be **\$180.00 per decal per year**.

Long-term Parking Magnetic Cards - the fee shall be **\$100.00 per employee, per month**.

Contractor Parking

Contractor Parking Cards - the fee shall be **\$200.00 per card, per year**.

Towed Vehicles

The fee for towed vehicles shall be **\$50.00 per occurrence**.

**GROUND TRANSPORTATION FEES
MIAMI INTERNATIONAL AIRPORT
AS OF OCTOBER 1, 2014**

SUB-CLASS	FEE
<i>The following deposit applies to all sub-classes except for Class D:</i> <ul style="list-style-type: none"> • \$500 security deposit per company with less than 10 vehicles • \$1,000 per company with 10 or more vehicles • MDAD may waive the security deposit requirement for a company paying fees on a per trip basis and having a maximum of one trip per month 	
Shuttle/Delivery Service	
A1—Bus	\$7.00 per trip
A2—Van	\$3.00 per trip
A3—Limo	\$3.00 per trip
B1—Hotel/Motel (Small)	\$1.00 per trip
B2—Hotel/Motel (Large)	\$2.00 per trip
B3—Commercial (Small)	\$2.50 per trip
B4—Commercial (Large)	\$3.00 per trip
C1—Crew Service (Small)	\$1.00 per trip
C2—Crew Service (Large)	\$2.00 per trip
Class D—Delivery Service	MDAD may assess a fee within the range of \$1-\$12.00 which reflects the appropriate operating costs applicable to the service performed and the size of vehicle used.
Off-Airport Rental Car Companies	
B5—Off-airport Car Rental Companies with less than \$500,000 annual MIA gross revenues	\$3.00 for each MIA contract
B6—Off-airport Car Rental Companies with MIA gross revenues between \$500,000 and \$4.9 million annually	4.5% of gross revenues from MIA passengers
B7—Off-airport Car Rental Companies with MIA gross revenues in excess of \$5 million annually	7.5% of gross revenues from MIA passengers
Off-Airport Parking Lot Operators	
B8—Off Airport Parking Lot Operators (Small vans)	Upper Level—\$1.00 per trip Lower Level—\$2.50 per trip
B9—Off Airport Parking Lot Operators (Large vans)	Upper Level—\$2.00 per trip Lower Level—\$3.00 per trip
Expedite Service Vehicle	
Class E Vehicles (companies with courier vehicles, armored cars and expedite late baggage vehicles)	\$200.00 annual permit fee per vehicle

Class E permits also include food vendors who pay a \$360.00 yearly fee for the annual permit, which expires each December 31st.

For sub-class B7 having *less* than \$20 million in annual gross revenues from MIA passengers, the Aviation Department charges 7.5% of gross revenues. For sub-class B7 having \$20 million or *more* in annual gross revenues from MIA passengers, 9% of gross revenues is charged.

GROUND TRANSPORTATION FEES (continued)

- **Mobile Food Truck Vendor Fee**—the annual fee shall be **\$360.00 per vehicle**. This fee will be assessed to mobile food truck vendors that sell food to the labor force at MIA.
- **Taxicab Operation Fee**—the fee shall be **\$2.00 per trip**.
- **Ground Transportation Permit Renewal Fee** – the annual fee shall be **\$100.00 per permit**.
- **Ground Transportation Permit Late Renewal Fee** – the fee shall be **\$100.00 per permit**.

AUTHORITY TO REVISE OR ADJUST BUILDING RENTAL RATES DURING PERIOD FOLLOWING BOARD OF COUNTY COMMISSIONERS ACTION AND BEFORE NEXT APPROVAL BY BOARD BASED ON REVISED APPRAISAL

By establishing and authorizing the imposition of the rental rates reflected on the attached appraisal document or in this Budget, the Board also establishes and authorizes the Aviation Department to impose, during the period following the Board's action and before the next approval by the Board of rental rates for the properties, any revised rental rates that are based on appraisals of any of the properties described in the attached document or the Budget that are obtained as a result of an appraisal performed under the authority of Board's action or agreement previously approved by the Board.

Miami International Airport Land Rental Rates Effective as of October 1, 2014

The following rental rates are to be effective October 1, 2014 and applied to all present and future leaseholds, when applicable. A map of land zone areas is attached.

Land Zone	Actual 2013-2014 Rate	Proposed 2014-2015 Rate
1 Airport	\$1.60 per sq.ft.	\$1.65 per sq.ft.
1a Airport – vacant land with aircraft access	N/A	N/A
2 Commercial sites at SEC of NW 36 th St & NW 72 nd Ave	\$2.10 per sq.ft.	\$2.10 per sq.ft.
3 N.W. 21 st St. and N.W. 39 th Avenue	\$2.75 per sq.ft.	\$2.75 per sq.ft.
4 Fuel Farm	\$2.00 per sq.ft.	\$2.00 per sq.ft.
5 N.W. corner of N.W. 97 th Avenue & N.W. 54 th Street	\$2.40 per sq.ft.	\$2.40 per sq.ft.
6 Jai-Alai fronton land area & NW 36 th Street Frontage	\$2.10 per sq.ft.	\$2.10 per sq.ft.
7 Commercial Sites on NW 12 th St & North of NW 36 th St	\$1.65 per sq.ft.	\$1.65 per sq.ft.

NOTE: There is an additional charge of \$.05 per square foot where special services are provided, such as high intensity lighting, power cost, etc.

Paving Rates

Paving rates are in addition to land rental.

Type of Paving	Actual 2013-2014 Rate	Proposed 2014-2015 Rate
Standard (Vehicular) Existing	\$.25 per sq.ft.	\$.30 per sq.ft.
Heavy Duty (Aircraft) Existing	\$.70 per sq.ft.	\$.75 per sq.ft.

Building Rental Rates Miami International Airport Effective as of October 1, 2014

The following are the estimated annual square foot building rates for the period October 1, 2014 to September 30, 2015. **These rates exclude land, water, sewer, electric, and common area janitorial except where footnoted.**

Building #. (Old bldg. #)	Building Description	Actual Rate 2013-2014	Proposed Rate 2014-2015
49	Offices (A/C) Shop (A/C)	\$6.00 \$6.00	\$6.00 \$6.00
700	Cargo (Non A/C) Offices (A/C) 2nd Floor Offices (A/C) 1st Floor Offices (without tenant improvements) 3 rd Floor Storage (storage only)*	\$11.75 (11) \$13.50 (11) \$15.00 (11) \$10.00	\$10.00 (11) \$11.50 (11) \$15.00 (11) \$10.00
701	Cargo (Non A/C) Offices (A/C) 2nd Floor Offices (A/C) 1st Floor Offices (without tenant improvements) 3rd Floor Storage (storage only)*	\$11.75 (11) \$13.50 (11) \$15.00 (11) \$10.00	\$10.00 (11) \$11.50 (11) \$15.00 (11) \$10.00
702	Cargo (Non A/C) Offices (A/C) 2nd Floor Offices (A/C) 1st Floor Offices (without tenant improvements) 3rd Floor Storage (storage only)*	\$11.75 (11) \$13.50 (11) \$15.00 (11) \$10.00	\$10.00 (11) \$11.50 (11) \$15.00 (11) \$10.00
703 (2120)	Engine Test Cell Bldg.—Storage Test Cells (in compliance with 40-year recertification) • Reciprocating-Dynamometer Cells • Large Jet Engine Cells	\$5.25 (12) \$11,000 per month (8)(13) \$13,000 per month (8)(13)	\$5.25 (12) \$11,000 per month (8)(13) \$13,000 per month (8)(13)
703A	Test Cell	\$13,000 per month	\$13,000 per month
704 (2121)	Warehouse (Non A/C)/Cargo (Non A/C) Offices (A/C)/Shop(A/C)/Storage(A/C)	\$5.75 (12) \$6.25 (12)	\$5.75 (12) \$6.25 (12)
706	Cargo (Non A/C) Offices (A/C) 3rd Floor Storage (storage only)*	\$15.50 (11) \$15.00 (11) \$10.00	\$15.50 (11) \$15.00 (11) \$10.00
707	Cargo (Non A/C) Offices (A/C) 3rd Floor Storage (storage only)*	\$15.50 (11) \$15.00 (11) \$10.00	\$15.50 (11) \$15.00 (11) \$10.00
708	Cargo (Non A/C) Offices (A/C) 3rd Floor Storage (storage only)*	\$15.50 (11) \$15.00 (11) \$10.00	\$15.50 (11) \$15.00 (11) \$10.00

*** No air conditioning is provided and only electric for minimal lighting.**

Building Rental Rates Miami International Airport
Effective as of October 1, 2014 (continued)

Building #. (Old bldg. #)	Building Description	Actual Rate 2013-2014	Proposed Rate 2014-2015
709	LanChile (Airis)	Tenant constructed building	
710	LanChile (Airis)	Tenant constructed building	
711	Arrow Cargo (Aeroterm)	Tenant constructed building	
712	Arrow Cargo (AMB Codina)	Tenant constructed building	
714	Cargo (Non A/C) Offices (A/C)	\$12.75 \$13.25	\$12.75 \$13.25
716A	Cargo (Non A/C) Offices (A/C) 2nd Floor Offices (A/C) 1st Floor	\$13.00 (11)(15) \$13.60 (11)(15) \$15.00 (11)	\$13.00 (11)(15) \$13.60 (11)(15) \$15.00 (11)
716B-J	Cargo (Non A/C) Offices (A/C) 2nd Floor Offices (A/C) 1st Floor	\$12.00 (11)(15) \$12.60 (11)(15) \$15.00 (11)	\$12.00 (11)(15) \$12.60 (11)(15) \$15.00 (11)
719 (2122)	Governmental Service Bldg. - CCC	\$19.50 (3)	\$19.50 (3)
741 (2204)	Decompression chamber	\$45,000 per year	\$45,000 per year
805	Cargo (Non A/C) Offices (A/C)	\$12.00 \$12.00	\$12.00 \$12.00
807	UPS (Cargo)	Tenant constructed building	
812	PPQ Building	MDAD/tenant constructed building	
815	USDA Veterinary Services	MDAD/tenant constructed building	
820 (1011)	Warehouse (Non A/C) Offices (A/C)	\$9.00 \$10.00	\$9.00 \$10.00
831	Office/Warehouse (FedEx)	Tenant constructed building	
836 (1054)	GSE Office/shop (AC)	\$13.50	\$13.50
839	Hangar (Landmark Aviation) Offices (A/C)	\$12.00 \$16.00	\$12.00 \$16.00
840	Landmark Aviation (Terminal)	\$20.00	\$20.00
844 (101)	Hangar - Storage (Non A/C) Offices (A/C) Storage (A/C)	\$9.25 (1) \$11.75 \$6.75	\$9.25 (1) \$11.75 \$6.75
845 (100)	Offices (A/C) Warehouse (Non-A/C) Warehouse (A/C) Warehouse Office (A/C) Simulator (A/C) Atrium Space—1st Floor (A/C) Atrium Space—Above 1st Floor (A/C)	\$16.00 (3) \$10.60 (3) \$11.29 (3) \$12.00 (3) \$12.79 \$19.00 (3) \$19.00 (3)	\$15.00 (3) \$10.60 (3) \$12.00 (3) \$12.00 (3) \$12.79 \$19.00 (3) \$19.00 (3)
850	AAR ACS (Maintenance Hangar)	Tenant constructed building	
855 (53)	Storage (A/C)	\$5.75	\$5.75
856 (52)	Storage (A/C)	\$5.50	\$5.50
857 (55)	Wash Rack & Drum Storage	\$4.50	\$4.50

* Rent includes land, water, sewer and common area janitorial.

Building Rental Rates Miami International Airport
Effective as of October 1, 2014 (continued)

Building #. (Old bldg. #)	Building Description	Actual Rate 2013-2014	Proposed Rate 2014-2015
861-862 (60)	Aircraft—Hangars (#6 and #7) Shops (A/C) Storage (A/C) Offices (A/C)	\$10.00 (1) (12) \$5.25 (12) \$5.25 (12) \$6.50 (12)	\$10.00 (1) (12) \$5.25 (12) \$5.25 (12) \$6.50 (12)
863 (60-A)	Engine Overhaul and Service Storage (A/C) 2nd Floor Storage (non A/C) 2 nd Floor Offices (A/C) 1 st Floor Offices (A/C)	\$5.50 \$4.00 \$4.00 \$10.00 \$8.00	\$5.50 \$4.00 \$4.00 \$10.00 \$8.00
871 (48)	Hangar (Non A/C) Office (A/C) Shop (A/C) Storage (A/C)	\$9.00 (1) \$5.50 \$4.25 \$4.25	\$9.00 (1) \$5.50 \$4.25 \$4.25
875 (43)	Flight Academy Office (A/C) Pan Am Office (A/C) Individual tenants Simulator Bays (A/C)	\$10.50 (19) \$13.75 \$9.00	\$10.50 (19) \$13.75 \$9.00
880-882 (30A-30B)	Simulators (A/C) Office Building (A/C) Storage	\$9.00 \$8.50 \$4.50	Schedule for demolition. Out for permitting
881 (30)	Office Building (A/C) Simulators	\$8.50 \$9.00	\$8.50 \$9.00
888 (35-35A)	Maintenance and Training (A/C) Office Space (A/C)	\$5.75	\$5.75
890 (25)	Hangar (Non A/C) Office Space (A/C) Storage (A/C) Shops (A/C)	Tenant owned building	
891 (24)	First Floor: Maintenance-Shops (A/C) Second Floor: Shops (A/C) Third Floor: Shops (A/C) Fourth Floor: Storage (Non A/C)	Tenant owned building	
896 (22)	Hangar—Maintenance (Non A/C) Office Space (A/C) Shops—Maintenance (A/C) Third Floor: Storage (A/C) Third Floor: Storage (Non A/C) Composite Shop Paint Booth	\$10.00 (1) \$7.75 \$5.75 \$5.00 \$4.75 \$10.00 \$10.00	\$10.00 (1) \$7.75 \$5.75 \$5.00 \$4.75 \$10.00 \$10.00

Building Rental Rates Miami International Airport
Effective as of October 1, 2014 (continued)

Building #. (Old bldg. #)	Building Description	Actual Rate 2013-2014	Proposed Rate 2014-2015
909	Flight Training Facility (Airbus)	Tenant Constructed Building	
916	Cargo Warehouse (Development)	Tenant Constructed Building	
919 (5A)	Office - Entire Building (A/C)	\$10.50	\$10.50
	Office - Per Floor or less (A/C)	\$13.00	\$13.00
	Office - Second Floor (Full Service)	\$21.00	\$21.00
	Storage (Non-A/C)	\$6.00	\$6.00
	Loading Dock	\$1.75	\$1.75
2082	Warehouse (El Dorado)	\$2.50*	\$2.50*
	Offices (A/C)	\$2.50*	\$2.50*
3010	Cabstand Cafe (A/C)	\$30.00 (5)	\$30.00 (5)
3030	Offices	\$10.00 (12)	\$10.00 (12)
3030A	Offices (A/C)—Wing of 3030	\$8.50	\$8.50
3032	Cafeteria (Non A/C)	\$4.75	\$4.75
	Cafeteria (A/C)	\$6.50	\$6.50
3033	Police Station (A/C)	\$10.00	\$10.00
3037	Maintenance-Garage (Non A/C)	\$6.00	\$6.00
	Offices (A/C)	\$6.50	\$6.50
3038	Building Services—Maintenance/Office (A/C)	\$6.50	\$6.50
3040	Maintenance Shops (Non A/C) and Offices (A/C)	\$6.60 (19)	\$6.60 (19)
3034	Triturator	\$36,000 (10)	\$36,000 (10)

* The 2006 rate included land, whereas the rates from 2010 and after are for the building only and the land rate and paving rate is charged separately.

***Building Rental Rates Miami International Airport
As of October 1, 2014 (continued)***

Building #. (Old bldg. #)	Building Description	Actual Rate 2013-2014	Proposed Rate 2014-2015
3046	Offices (A/C) Shop (A/C)	\$10.00 \$6.25	\$10.00 \$6.25
3047	Offices (A/C)	\$10.00	\$10.00
3048	Offices (A/C)	\$10.00	\$10.00
3049	Maintenance Garage (Non A/C)	\$7.00	\$7.00
3050	Administration Building (Multiple Tenancy)	\$14.25 (18)	\$14.25 (18)
3074	In-flight Caterers: Kitchen (Non A/C) Kitchen (A/C)	\$8.50 \$10.50	\$8.50 \$10.50
3077	Triturator	\$36,000/yr (10)	\$36,000/yr (10)
3078	Fuel Building (A/C) Offices (A/C)	\$10.00 \$10.25	\$10.00 \$10.25
3089	Parking Garage	\$50.00/mo. (4)	\$50.00/mo. (4)
3091	Maintenance/Offices (A/C)	\$7.75	\$7.75
3094	Parking Garage	\$50.00/mo.(4)	\$50.00/mo.(4)
3095-A	*American Airlines Hangar Hangar Area (Non A/C) – 1 st Floor Shops, Storage & Office – 1 st and 2 nd Floors (A/C) Shops, Storage & Office – 1 st and 2 nd Floors (Non A/C) Office	By agreement \$11.00 \$8.50 \$7.50 \$10.25	By agreement \$11.75 \$9.00 \$8.00 \$11.00
3095-B	Offices (as renovated): Offices—Entire Building (A/C) Offices—Per Floor (A/C) Offices—Penthouse (A/C)	\$11.00 \$19.00 (3) \$22.00 (3)	\$11.00 \$17.00 (3) \$20.00 (3)
3100	Maintenance Garage (Non A/C)	\$7.00	\$7.00
3101	Maintenance Garage—Storage (Non A/C)	\$6.00	\$6.00
3110	Offices—Security	\$21.00	\$21.00
3150	Offices (A/C)	\$11.50	\$11.50
3151	Maintenance—Shop (Non A/C) Offices (A/C)	\$6.00 \$11.00	\$6.00 \$11.00
3152	Service Station (Non A/C)	\$5.75	\$5.75
3153	Car Wash Building	\$5.75	\$5.75
3241	RCC Office (A/C) RCC Storage (A/C)	\$26.00 (20) \$15.00 (20)	\$26.00 (20) \$15.00 (20)

**** This rental rate is set by agreement with American Airlines and is adjusted annually by CPI***

***Building Rental Rates Miami International Airport
Effective as of October 1, 2014 (continued)***

Building #. (Old bldg. #)	Building Description	Actual Rate 2013-2014	Proposed Rate 2014-2015
4001	Traffic Control Center	\$13.00	\$13.00
4002	Public Works Office	\$12.00	\$12.00
4003	Corrections Office (A/C)	\$7.50	\$7.50
4003A	Offices (A/C) Storage (Non A/C)	\$7.00 \$6.00	\$7.00 \$6.00
4004	Sign Shop (Non A/C)	\$6.00	\$6.00
MIC	Platform - Unfinished space (21)	\$30.00	\$30.00

Loading Dock

Loading dock area has an additional rate of \$1.75 per square foot.

Utility Rates

The rental rates herein exclude utilities (water, sewer and electric) except as footnoted. Utilities shall be applied as a separate charge.

Trailer Parking & Modular Units

Trailer parking has a rate of \$175.00 per space per month for single wide trailers, \$350.00 per space per month for double wide trailers and \$525.00 per space per month for a triple wide. Modular units are authorized for temporary use by tenants for office or storage purposes, preceding and/or during construction, and have the rates of \$175.00 per space per month for single wide trailers, \$350.00 per space per month for double wide trailers and \$525.00 per space per month for a triple wide.

Automobile Parking

Automobile parking (grade level & non-garage space) has a charge of \$40.00 per space per month. Limousines that occupy no more than a standard parking space/area will be charged \$40.00 per month. Larger limousines have a rate of \$80.00 per month. Tour buses and buses in excess of eight (8) feet wide and 18 feet long have a rate of \$150.00 per month.

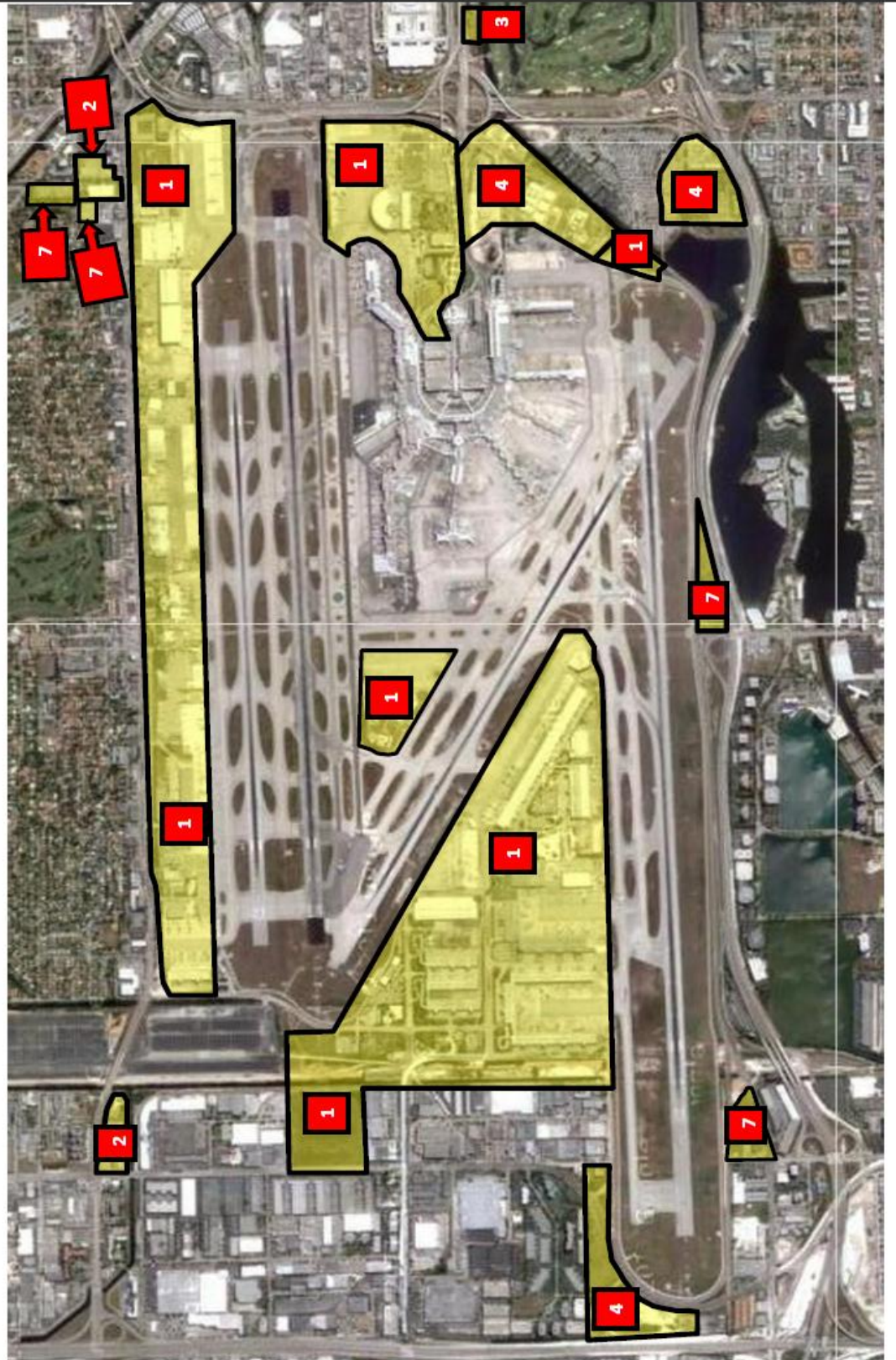
Full Service

This includes land rent, janitorial and utilities.

Footnotes

- 1) Non-airline tenants shall pay the said per square foot rate or 3% of all gross revenues produced from providing aircraft maintenance services to others, whichever is greater.
Airline tenants shall pay 3% of all gross revenues produced from providing aircraft maintenance services to others in addition to the said per square foot rental rates.
- 2) Rent includes land, electricity, and common area janitorial.
- 3) Rent includes land, electricity, water, sewer and common area janitorial.
- 4) Rent per position per month.
- 5) Tenant pays minimum guarantee.
- 6) The rental rate reflects the "As Is" condition of the building. The building has limited fire and electrical systems. (Not used in 2005.)
- 7) Rent includes water, sewer, electricity, and common area janitorial. (Not used in 2005.)
- 8) Rent includes land.
- 9) The rent includes water and sewer. (Not used in 2005.)
- 10) Rates based on approved actual audited construction costs.
- 11) Rent includes common area janitorial, excludes land.
- 12) Additional rent may be applicable to recover costs of 40-year recertification and costs of repairs to comply with life safety codes.
- 13) Rate includes amortization of 40-year recertification and costs of repairs to comply with life safety codes.
- 14) Rate based on competitive bidding.
- 15) Appraised rate includes a charge of \$.10 per square foot as a trash removal fee.
- 16) No longer applicable (*was formerly "Rental based on 20-year lease. Adjusted annually on January 1st"*)
- 17) No longer applicable (*was formerly "Hangar is currently unusable and can only be used as aircraft parking until roof repairs are completed."*)
- 18) Includes land rent and janitorial.
- 19) Includes common area janitorial.
- 20) Includes land rent and janitorial. Utilities are paid by rental car agencies in MIC.
- 21) Tenant pays for all tenant improvements and for utilities.

LAND ZONE MAP – ZONES 1, 2, 3, 4 & 7



FUEL FARM TAB

**FUEL FLOWAGE FEES
MIAMI INTERNATIONAL AIRPORT
AS OF OCTOBER 1, 2014**

		STORAGE	TRUCK	HYDRANT
Direct Expenses		\$2,898,462	\$644,951	\$908,236
Indirect Expenses		1,063,500	0	55,964
Total Operating Expenses		\$3,961,961	\$644,951	\$964,200
Debt Service		4,126,862	563,300	6,093,931
Reserve Maintenance Fund Deposit		--	--	--
Management Fee		482,268		
Less: County Credit				
Total Requirement	[A]	\$8,571,091	\$1,208,251	\$7,058,131
Estimated Gallonage	[B]	842,253,936	245,537,758	596,716,178
Total Cost per Gallon	[C=A/B]	\$0.010176	\$0.004921	\$0.011828
Add Storage (a)	[D]		\$0.010176	\$0.010176
Fuel Flowage Fee	[C+D]		\$0.015097	\$0.022004

(a) Storage costs are spread amongst the truck and hydrant users equally.

Fuel Flowage Fee Calculation Explanation

Because MDAD operates the fuel farm at MIA, it strives to recover the operating and capital costs related to the fuel farm directly from the fuel consumers through the fuel flowage fee. The operating costs are determined through the annual budget process by a fuel management company and reviewed by the Environmental Division. The cost is allocated amongst the following three areas: storage (represents the cost related to the above ground fuel storage tanks owned by MDAD), hydrant fueling (represents any costs related to providing fuel to air carriers through the hydrant system) and truck (represents any costs related to providing fuel to air carriers through fuel trucks rather than using the hydrant system). In addition, the costs of any assets acquired for the fuel farm are categorized by these three areas depending on how the asset is utilized. These assets are then included in the costs by amortizing them over their useful life using MDAD's current cost of capital. After aggregating these costs, a fuel flowage fee is calculated by dividing these costs by the estimated gallons to be purchased (either through truck or hydrant) during the fiscal year.

A separate fuel flowage fee is charged for general aviation users.

GENERAL AVIATION TAB

**GENERAL AVIATION AIRPORT FEES AND CHARGES
MIAMI INTERNATIONAL AIRPORT
AS OF OCTOBER 1, 2014**

Operational Closure Fee—a fee of **\$4,800.00 per day (or portion thereof), or \$200.00 per hour for government entities** shall be required for operational closure at the Training and Transition Airport (or part thereof) or General Aviation Airport (or part thereof) to cover costs incurred by safety officer and vehicle required by the Federal Aviation Administration.

Aerial Advertising Fee—a fee of **\$14.00** will be charged for aerial advertising (banner towing) at the General Aviation Airports. This fee will apply to the combination of banner pick-up and recovery, and will not exceed three (3) charges per day, per aircraft.

Aircraft Parking at General Aviation Airports— For M-1 aircraft, the same rates charged at Miami International Airport for 1 – 5 days. The M-1 daily base rate is currently **\$11.00 per day** and will apply for the entire parking period. For all other aircraft, the same rates charged at MIA but the rates shall increase over time as reflected on the attached aircraft parking rates schedule. Please reference the Aircraft Parking Rates in the Airside section of this book.

SEE SCHEDULE AT THE END OF THE AIRSIDE SECTION FOR AIRCRAFT PARKING FEES WHICH ARE LISTED BY AIRCRAFT TYPE.

Conference Room Rental Fee (Miami Executive and Opa-Locka Airports)—the rate for non-profit entities shall be **\$10.00 per use**; the rate for other than non-profit entities shall be **\$50.00 per use**; the use for all entities shall be limited to four (4) hours.

Off-Road Vehicle Parking Fee at Training and Transition Airport—the rate shall be **\$50.00 per vehicle, per fiscal year** (October 1 through September 30) **or fraction thereof**.

Fuel flowage fee at the General Aviation Airports—the rate shall be **\$0.08 per gallon**.

Usage of Training and Transition Airport is **\$28.00 per approach**.

AOA (Aircraft Operating Area) Decal for General Aviation Airport Commercial Vehicles and Equipment – the fee shall be **\$10.00 per decal**. AOA decals provide for the identification and regulation of airfield traffic. AOA decals also provide verification that vehicles and equipment are properly insured.

AOA Decal for General Aviation Airport Privately Owned Vehicles and Equipment – the fee shall be **\$5.00 per decal**. AOA decals provide for the identification and regulation of airfield traffic. AOA decals also provide verification that vehicles and equipment are properly insured.

AOA Decal Replacement Fee for General Aviation Airport Vehicles and Equipment – the fee shall be **\$10.00 per decal** and covers costs associated with research, cancellation and reissuance of each decal.

AOA Decal Late Application Fee – the fee shall be **\$10.00 per decal** and covers expedited processing times requiring additional manpower.

Opa-Locka Executive Airport 2015 Property Rental Summary			
LAND RENTAL		Rent/Sq. Ft./ Year	
		Current	Market Rent
Aeronautical Land		\$0.21	\$0.23 *
Non-Aviation Land – minimum bid			
Runway 9L Clearance		\$0.55	\$0.60
Non-Aviation Land		\$1.00	\$0.90
PAVEMENT RENTAL		Rent/Sq. Ft./ Year	
		Current	Market Rent
Pavement		\$0.05	\$0.05
Non-Aviation Land Lease Number/Tenant		Rent/Sq. Ft./ Year	
		Current	Market Rent
Lease No. O-216 Miami-Dade Dept. of Corrections		\$1.10	\$1.00
Lease No. O-1519 Miami-Dade Water & Sewer Dept.		\$0.90	\$0.80
Lease No. O-8088 Schaecter – clear zone (2)		\$0.460	\$0.474
Non-Aviation Buildings		Rent/Sq. Ft./ Year	
		Current	Market Rent
Building	190na	\$4.70	\$4.70
BUILDING RENTAL (1) Aviation Tenants		Rent/Sq. Ft./ Year	
		Current	Market Rent
Building	35	\$3.84	\$3.84
Building	39	\$4.13	\$4.13
Building	40E (3)	\$7.95	\$7.95
Building	40C (2)	\$7.65	\$7.65
Building	40W (1)	\$7.78	\$7.78
Building	41E (3)	\$7.65	\$7.65
Building	41C (2)	\$7.65	\$7.65
Building	41W (1)	\$7.65	\$7.65
Building	45	\$5.21	\$5.79
Building	46	\$9.00	\$9.86
Building	47	\$5.33	\$5.93
Building	102	\$0.00	\$0.00
Building	107 Office	\$19.00	\$19.00
Building	107 Dorm	\$18.50	\$19.00
Building	114	\$4.49	\$4.49
Building	119r	\$3.58	\$3.58
Building	180	\$2.75	\$2.75
Building	209r	\$3.75	\$3.75
Building	412	\$1.25	\$1.25
Building	413	\$2.75	\$2.75
Building	418	\$2.75	\$2.75
Note 1: Annual rent/SF excluding land or pavement			
Note 2: Rent subject to annual 3% increase			
Last Revised 20-June-14			
OPF.14			
* AVIATION DEPARTMENT NOTE: Rate of \$0.22 was adopted on September 18, 2014 by the Board of County Commissioners			

Miami Executive Airport 2015 Property Rental Summary			
LAND RENTAL		Rent/Sq. Ft./ Year	
		Current	Market Rent
Aeronautical Land		\$0.18	\$0.20 *
Non-Aviation Land – minimum bid		\$1.20	\$1.20
PAVEMENT RENTAL		Rent/Sq. Ft./ Year	
		Current	Market Rent
Pavement		\$0.05	\$0.05
FARM LAND		Rent/Acre/ Year	
		Current	Market Rent
Farm Land – minimum bid		\$350	\$350
BUILDING RENTAL		Rent/Sq. Ft./ Year	
		Current	Market Rent
Aviation Tenants		Current	Market Rent
Building	102	\$3.33	\$3.33
Building	109	\$3.56	\$3.56
	109A	\$2.84	\$2.84
	109B	\$2.84	\$2.84
Building	114	\$3.28	\$3.28
Building	121	\$4.59	\$4.59
Building	123	\$4.53	\$4.53
Building	221	\$3.64	\$3.64
Building	222	\$2.04	\$2.04
Building	247	\$5.10	\$5.10
Building	504	\$4.93	\$4.93
Building	225	\$3.24	\$3.24
Building	226	\$1.24	\$1.24
Building	227	\$3.73	\$3.73
Building	228	\$5.50	\$5.50
Building	229	\$5.18	\$5.18
Building	501	\$7.58	\$7.58
Building	505	\$2.29	\$2.29
Building	507	\$15.00	\$15.00
Note 1: Annual CPI Rental Adjmt Per R-569-05 Last Revised 6/20/2014 TMB.14			
* AVIATION DEPARTMENT NOTE: Rate of \$0.19 was adopted on September 18, 2014 by the Board of County Commissioners			

Homestead General Aviation Airport 2015 Property Rental Summary			
LAND RENTAL		Rent/Sq. Ft./ Year	
		Current	Market Rent
Aeronautical Land		\$0.07	\$0.07
PAVEMENT RENTAL		Rent/Sq. Ft./ Year	
		Current	Market Rent
Pavement		\$0.05	\$0.05
FARM LAND		Rent/Acre/ Year	
		Current	Market Rent
Farm Land – minimum bid		\$350	\$350
SHADE HANGARS		Rent/Unit/ Year	
		Current	Market Rent
Building	13	\$150	\$150
BUILDING RENTAL (1)		Rent/Sq. Ft./ Year	
Aviation Tenants		Current	Market Rent
Building	2	\$3.82	\$3.82
Building	3	\$2.65	\$2.65
Building	5	\$3.53	\$3.53
Building	10	\$3.82	\$3.82
Building	14	\$2.65	\$2.65
Building (2)	13	\$1.14	\$1.14
Note 1: Annual rent/SF excluding land or pavement Note 2: Annual rent/SF for entire building Last Revised 6/20/2014 X51.14			

TELECOMMUNICATIONS TAB

**TELECOMMUNICATION FEES
MIAMI INTERNATIONAL AIRPORT
AS OF OCTOBER 1, 2014**

Wireless Services Providers—the annual rates shall be as follows:

- \$200,000.00 per cellular telephone (cell site)
- \$15,000.00 per micro antenna cell station

Cable Television (CATV) Recovery Fee

- \$60.00 per month per location at private offices and break-rooms
- \$215.00 per month per location at bars, restaurants and clubs

Coaxial Cable Recovery Fee

- Recovery Fee: \$35.00 per month
- Installation: \$150.00 per location
- Additional work: \$75.00 per hour plus material at cost plus 25%
- Equipment rental: \$20.00 per month, per television
- Unauthorized Service: \$1,000.00 per location per month plus monthly fee

Wifi Internet Access Fee - \$10.00 per device, per month. (airport tenants, airlines and concessionaires)

Wireless Network Access Fee for Multiple Users - \$600.00 per month, to provide MDAD internet services and Wifi to airline lounges.

Offsite FIDS Rate

Network Port Costs (Monthly)

- \$60.00 per PC connection. Each PC can drive two monitors.

Equipment Rental Costs (Monthly)

- \$50.60 for 42" LCD Display
- \$4.22 for monitor mounting and security locks
- \$13.49 per PC for Web FIDS
- \$3.37 per Video Extender to drive monitor from PC
- \$7.00 for Dual Video Output Card

Telecommunications Fees
Miami International Airport
Voice and Data Network - STS Prices
As of October 1, 2014

Description	Mo. Unit Rental	Unit Install
1) Switch Access		
Meridian One Port	\$15.00	\$66.65
Advanced Features (Conference Calling, Speed Calling, Etc.)	\$6.25	\$6.25
2) Network Access - Public		
Single Line Access	\$22.50	\$66.65
Wireless Telephone Access	\$36.25	\$66.65
Network Access	\$61.25	\$66.65
3) System - Terminal Equipment		
M3902 Basic Rel. 3 Digital Phone - 1 Line	\$7.45	\$133.30
M3903 Enhanced Rel. 3 Digital Phone - 3 Line	\$17.65	\$133.30
M3904 Professional Rel. 3 Phone - 5 Line	\$22.43	\$133.30
M3904 Add On Module	\$7.48	\$66.65
M3905 Call Center Telephone Rel 3	\$24.21	\$133.30
Analog Set	\$4.21	\$133.30
Companion Wireless Telephone	\$19.43	\$133.30
Conference Phone	\$34.66	\$133.30
Loud Bell	\$7.90	Per Quote
Handsfree Headset	\$13.36	\$133.30
4) System - Other		
Voice Mail Box	\$6.25	\$33.33
Authorization Code	\$1.25	\$33.33
Voice Cable (Fax, Modem, or Clock Programming)	\$3.28	\$66.65
Level 5 Data Cable	\$3.28	Per Quote
Internet Access (See Note #2)	\$31.25	N/A
Ethernet Port	\$75.00	\$133.30
Additional Static IP Address	\$12.50	\$66.65
Wireless Data Ports	\$37.50	N/A
WiFi Data Port Internet Access	\$10.00	N/A
One Strand foot of Fiber (MM or SM) (')	\$0.019	Per Quote
SC Connector in Fiber Patch Panel	\$4.20	\$33.33
Fiber Termination	N/A	\$133.30
Copper Cable per pair foot (')	\$0.006	Per Quote
Black filled Copper Cables per pair foot (')	\$0.006	Per Quote
25 pair Copper Cable per pair foot (')	\$0.038	Per Quote

Notes:

1. All customers require a quote and MDAD contract for installation and monthly service.
2. Internet Access is a service provided using the MDAD LAN. An Ethernet Port and CAT 5 cable are required for the service.
3. Cable and conduit installation quoted if required for service.

MISCELLANEOUS TAB

**MISCELLANEOUS FEES AND CHARGES
MIAMI INTERNATIONAL AIRPORT
AS OF OCTOBER 1, 2014**

Opportunity Fee

Opportunity Fee for Third-Party Vendors—an opportunity fee will be imposed on third-party vendors contracted to provide services at MIA. This fee will be 7% of gross revenues derived from services provided at MIA.

Opportunity fees for aircraft Maintenance Repair Overhaul (MRO) operators will be 3% (three percent) of gross revenues. Opportunity fees for vending machine operators at all Miami-Dade County Airports will be 30% (thirty percent) of gross revenues. All other third-party vendors will be maintained at a 7% charge on all gross revenues. The opportunity fees on vending machines are being revised to reflect rates consistent with MIA concessionaire vending machines.

Penalty Fee for Employing Unpermitted Service Vendors

Penalty fees will be assessed to Aviation Department tenants who employ service vendors which operate without an Aviation Department permit.

- A penalty fee of \$500.00 will be assessed for the first occurrence, to be cured within 90 days.
- Incremental assessments of \$500.00 for each 30 days thereafter that the condition is not cured will be imposed.

Cure is defined as the service provider initiating and completing the permit process and paying all fees due from the period in which there was no permit. If the permit is being processed and the service provider is cooperating in good faith, no further penalties will be assessed after the first 90 days.

Miscellaneous Air Carrier Fees

- **Disruptive Passenger Fee**—airlines will be charged for actual costs incurred by the Department for disruptive passengers resulting from delayed or canceled flights.
- **GSE (Ground Service Equipment) Impoundment Fee**—a GSE impoundment fee will be imposed at a rate of \$10.00 per day and per GSE equipment for the first 15 days. From 16 to 30 days, the impoundment fee will increase to \$20.00 per day and per impoundment. At 31+ days, the impound fee will increase to \$40.00 per day and per impoundment until the impounded equipment has been released.
- **Aircraft Handling Chock Fee at the General Aviation Center or Remote Locations** – The fee shall be \$100.00 per aircraft.

MISCELLANEOUS FEES AND CHARGES (continued)

Employee (MDAD Tenant) ID Badge Fees

- **Employee Identification Badge Fee**—the fee shall be **\$20.00** for each ID badge Issuance and Renewal.
- **Lost or Unaccounted Employee ID Badge Fee**—the fee shall be **\$75.00 for the 1st replacement** and **\$100.00 for the 2nd replacement**.
- **Failure to NOTIFY and RETURN a Terminated Employee ID Badge Fee** – the fee shall be **\$100.00 per badge**.
- **TSA 5% Rule Violation Fee** – the fee shall be **\$125.00 per badge** and will be assessed when unreported lost, unaccounted for, or unreturned badges exceed 5% of total badges issued. This fee will not apply to badges already charged under the “Lost or Unaccounted for” rule.
- **Fingerprinting Fee**—the fee shall be **\$38.00 per individual** fingerprinted. Of this amount, \$29.00 is forwarded to TSA while MDAD retains \$9.00 for administrative fee.

Airside Vehicle, Training and Decal/Permit Replacement Recommended Fees

- **Aircraft Operating Area (AOA) Decals** – the fee shall be **\$20.00 per vehicle**.
- **AOA Decals (Lost or Unaccounted)** – the fee shall be **\$75.00 for the 1st replacement** and **\$100.00 for the 2nd replacement**.
- **AOA Driver Training** – the fee shall be **\$15.00 per person**.
- **AOA Movement Area Training** – the fee shall be **\$15.00 per person**.
- **Loading Bridge Training** – the fee shall be **\$15.00 per person**.
- **AOA Driver Training, Movement Area, Loading Bridge Training Permit Replacement Fee** – the fee shall be **\$15.00 per permit**.
- **AOA Decal Late Application Fee** – the fee shall be **\$10.00 per decal** and covers expedited processing time requiring additional manpower.

Into-Plane Fueling Recommended Fees

- **Non-commercial Aircraft Fueling** - remains at **\$0.08 per gallon** (effective 10/1/02).

Airline VIP Clubs

- **Opportunity Fee**—the Lessee shall pay 35% of the Department’s basic VIP Club Fee, (which is currently \$27.50) as may be adjusted from time-to-time, for each non-member passenger, as defined in the VIP Club Agreement, Article 2.01 (Use of Premises) that uses its Club Facilities. Lessee’s Opportunity Fee charge, (35% of \$27.50) is \$9.63 for each non-member passenger using its club facilities.
- **Concession Fee**—the Lessee shall pay eighteen (18%) percent of the monthly Gross Revenue generated from liquor sales and ten (10%) percent of the monthly Gross Revenues generated from the sale of all other amenities granted the Lessee.

MISCELLANEOUS FEES AND CHARGES (continued)

Letter of Determination Fee (Height Restrictions)

The fee shall be \$1,700.00 per each major Development Review and Letter of Determination submittal. The Aviation Department has been providing this service for the review, coordination and determination of proposed tall structures without any compensation since the Airport Zoning Ordinances were first enacted in 1969. This review includes the assurance that proposed developments comply with Miami-Dade County's airport zoning requirements. It also includes a verification of the Federal Aviation Regulations Part 77 FAA notification, review and aeronautical study determination of proposed obstruction to ensure the safety and capacity at the airport are not adversely impacted.

Letter of Determination Fee (Land Use Zoning Analysis)

The fee shall be \$700.00 per each Land Use Zoning Analysis Request. The Aviation Department has been providing a free-of-cost service for the review, coordination and determination of land use compatibility impacts as mandated by the Florida State Statutes, Chapter 333 since 1993. Upon final review and analysis, the Aviation Department issues a "Letter of Determination" to the respective requestors. This review includes the assurance that proposed developments comply with Miami-Dade County's Airport Zoning requirements. The recent reductions in staffing level combined with the continuous increases in the number of projects being submitted to MDAD for review at an average of 62 per year are affecting available staff time and resources. The implementation of the proposed new fee structure will permit the Aviation Department to continue providing this vital service that it deems a crucial function and an integral part of maintaining and preserving the safety and capacity of the County's Public-Use Airport System.

MDAD Technical Reviews and Written Comments

Fees for written comments (to include comments for conceptual development plans) were implemented to recover costs associated with the technical review of proposed land-uses and structures and the issuance of written comments where airspace/land use and land use Letter of Determination (LOD) criteria does not otherwise apply. This fee also applies to conceptual plans in which case MDAD's comments are requested.

Fees for Development Impact Committee (DIC) or Equivalent Large-Scale Zoning Hearing Application were implemented to recover costs associated with MDAD Planning Division's review and written comments for the County's Developmental Impact Committee (DIC) zoning hearing applications or any other type of large scale applications where Airspace/Land-Use and Land-Use Letter of Determination (LOD) criteria does not otherwise apply. Fee will be waived if proponent pays for LOD. If the DIC application is conceptual during the review time and when department comments are due, MDAD will charge the \$360.00 even if an Airspace/Land-Use LOD is required in the future.

Fees were implemented to recover costs associated with requests for new MDAD-issued Airspace/Land-Use or Land-Use Letter of Determination (LOD) which provide a time extension for an existing MDAD-issued LOD nearing expiration or already expired. This new LOD is only for an extension of time. All referenced data including, but not limited to, the land use, structure elevation, site plans, address or impacted property folio numbers as well as the actual approval must be identical to the data provided in the previously approved MDAD-issued LOD.

MISCELLANEOUS FEES AND CHARGES (continued)

- Cell towers and other structures under 200 feet above mean sea level – the fee shall be **\$360.00**
- Request for written comments – the fee shall be **\$360.00**
- Request for written comments (revised plans) – the fee shall be **\$90.00**
- Development Impact Committee or Equivalent Large-Scale Zoning Hearing Application – the fee shall be **\$360.00**
- Permissible Crane (or Equipment) Height Determination – the fee shall be **\$360.00**
- Permissible Crane (or Equipment) Height Determination Extension Fee – the fee shall be **\$90.00**
- Permissible Crane (or Equipment) Height Determination Additional Coordinates – the fee shall be **\$45.00** (per set)
- Request for New Letter of Determination Due to Expiration – the fee shall be **\$360.00**

Passenger Facility Charge (PFC) – In accordance with 14 CFR Part 158 of the Federal Aviation Regulations, MDAD (Miami-Dade Aviation Department) has been authorized by the FAA to require any commercial air carrier operating at Miami International Airport to collect **\$4.50 per enplaned passenger** on its behalf. Such air carrier is allowed to keep \$0.11 per PFC of the amount remitted to MDAD.

Other Fees

- **Auditorium Use Fee (Miami International Airport)**—the fee shall be \$700.00 per use per day for the whole auditorium. The auditorium can be rented as three separate halls; the fee shall be room #1 \$200.00, room #2 \$250.00 and room #3 \$250.00. It may also be rented incrementally in 4 hour blocks, the fee shall be room #1 \$100.00, room #2 \$125.00 and room #3 \$125.00.
- **Conference Room Use Fee (Miami International Airport – Non Terminal)** – the fee shall be \$150.00 for 4 hours to cover administration, preparation, utility and janitorial costs associated with converting vacant non-leased rooms into usable space for meetings and other specialized functions.
- **Consular Lounge Annual Membership Fee** – the fee shall be \$500.00 per entity to cover costs associated with providing needed protocol services to members of the Consular Corps of Miami and other high-level dignitaries.
- **Consular Lounge Rental Fee for Non-Member Organizations** – the fee shall be \$500.00 for 1 – 4 hours of use per day and \$900.00 for 8 consecutive hours (full day) during a 24-hour period for rental of the MDAD Consular Lounge to non-member organizations (those organizations that are not part of the Consular Corps of Miami).
- **Late Revenue Reporting Fee** – the fee shall be \$50.00 per day, up to \$750.00 per violation for all companies doing business with the Miami-Dade Aviation Department that are required to submit revenue reports on a recurring basis (monthly, quarterly, annually, etc.).
- **Wheelchair Lift Fee**—the fee shall be \$15.00 per use and will be assessed to commuter airlines that require wheelchair-lifting equipment.
- **Security Violation Fee** – the fee shall be; first offense \$100.00; second offense \$250.00; third offense \$500.00. In addition, all court costs will also be applicable.
- **Permit Application Fee for providers of goods and services to airlines and airport tenants** - the fee shall be \$1,000.00 per permit application. A non-refundable application fee will be charged for each permit application for the provision of goods and services to airlines and other tenants at a County Airport. The current fee is \$1,000.00 and may be amended from time to time.

Other Fees (continued)

- **Permit Extension Fee for providers of goods and services to airlines and airport tenants** – a minimum fee of \$500.00 which amount may be amended from time to time may also be assessed to cover the administrative costs associated with allowing a permit extension. Permit extensions are limited to 12 months.
- **Aircraft Demolition Fee** – the fee shall be \$2,000.00 per month, per aircraft for months 1 through 3; and \$4,000.00 per month, per aircraft beginning at month 4 and each month thereafter.
- **Baggage or Property Impound Fees** – The fee shall be \$5.00 per day, per piece for the first 15 days; \$10.00 per day, per piece for 16 to 30 days; \$20.00 per day, per piece for 31+days. The fee is established to cover retrieval and storage costs of unattended or neglected baggage or property.
- **Background Check Fee** – the fee shall be \$168.00 plus a 15% administrative fee per background check. The background check fee is administered by an outside vendor and will enable the department to pay for background checks for individuals applying for leases, business opportunities and other real property opportunities at the County's airports.
- **Animal Inspection Facility User Fees** – The following fees will apply for each animal that passes through the USDA Inspection Facility (Bldg. 815):
 - **Small Ruminants** (Sheep, goats, pigs, swine) - **\$25.00 flat fee per air waybill**
 - **Small Animals** (Dogs, cats, & other pet types) - **\$15.00 flat fee per air waybill**
 - **Livestock** (Equine, cattle, calves, ovine, caprine, porcine, Ostrich, etc.) - **\$45.00 per Head**
 - **Alpaca** - **\$25.00 per Head**
 - **Poultry** (Birds, baby chicks, turkey, etc.) - **\$25.00 flat fee per air waybill**
 - **Other** - **\$25.00 flat fee per air waybill**

Remittance Fee 5% - Freight Handler will retain 5% of Inspection Fees for collecting amounts payable to Miami-Dade Aviation Department.
- **Average Electrical Consumption per kilowatt hour (kWh) Charge** – The charge shall be \$0.1065 per kilowatt hour consumed.
- **Airside Enforcement Processing Fee** – the fee shall be \$100.00 per civil violation. This fee covers costs associated with MDAD Airside Enforcement personnel that must testify at court hearings.
- **Violation Fees for Airport Concessionaires or Tenants** – The following fees may be charged by MDAD for violations of Chapter 25 of the Code of Miami-Dade County or agreements applicable to a Concessionaire or a Tenant:
 - **Violation of permitted use of a location** – The fee shall be \$100.00 per day, per location.
 - **Failure to maintain required hours of operation** – The fee shall be \$50.00 per day, per location.
 - **Failure to submit required documentation and reports** – The fee shall be \$50.00 per day, per report, up to \$750.00 per month.
 - **Unauthorized advertising** – The fee shall be \$50.00 per day, per location.
 - **Failure to maintain premises in a clean state** – The fee shall be \$50.00 per day, per location.
 - **Failure to maintain pricing at a level required by agreement, or to conduct surveys as required** – The fee shall be \$50.00 per day, per location.
 - **Installation of unapproved items in locations** – The fee shall be \$50.00 per day, per location.
 - **Violation of other terms and conditions** – The fee shall be \$75.00 per day, per location.

The foregoing fees are due and payable from a Concessionaire or Tenant determined by MDAD to be in violation of either Chapter 25 or an applicable agreement or both. Imposition of such fees is an additional remedy available to MDAD for such violations and is not intended to waive MDAD's right to terminate an agreement for such violations, in addition to imposing the foregoing fees.

APPENDIX A TAB

ALLOCATION OF OPERATING AND DEBT SERVICE COSTS BY COST CENTER WORKSHEET
Terminal Rental Rate Calculation Model
Miami-Dade County Aviation Department
Miami International Airport
FY 2014-15

Division-Description	Budgeted FY 2014-15	Direct Expense	G&A Expense	Transfers	International Facilities Percentage	Domestic Baggage Claim Percentage	Outbound Baggage Makeup Percentage	Screening Percentage	Terminal Rent Percentage	Total Terminal Percentage	Non-Terminal Percentage	Total	International Facilities Expense	Domestic Baggage Claim Expense	Outbound Baggage Makeup Expense	Screening Expense	Terminal Rent Expense	Total Terminal Expenses	Non-Terminal Expenses	Total Expenses
					[A]	[B]	[C]	[D]	[E]	[F=A+B+C+D+E]	[G]	[F+G]								
01-Executive	\$1,880,020		\$1,880,020		3.5%	0.5%	1.5%	2.8%	53.4%	61.7%	38.3%	100.0%	\$66,177	\$8,648	\$27,636	\$53,017	\$1,004,683	\$1,160,160	\$719,860	\$1,880,020
02-Legal	2,803,058		2,803,058		3.5%	0.5%	1.5%	2.8%	53.4%	61.7%	38.3%	100.0%	98,668	12,894	41,205	79,046	1,497,954	1,729,767	1,073,291	2,803,058
03-Administration	384,065		384,065		3.5%	0.5%	1.5%	2.8%	53.4%	61.7%	38.3%	100.0%	13,519	1,767	5,646	10,831	205,244	237,007	147,058	384,065
04-Accounting	4,159,710		4,159,710		3.5%	0.5%	1.5%	2.8%	53.4%	61.7%	38.3%	100.0%	146,422	19,135	61,148	117,304	2,222,949	2,566,957	1,592,753	4,159,710
05-Finance & Strategy	791,200		791,200		3.5%	0.5%	1.5%	2.8%	53.4%	61.7%	38.3%	100.0%	27,850	3,640	11,631	22,312	422,817	488,250	302,950	791,200
06-Human Resources	16,745,848		16,745,848		3.5%	0.5%	1.5%	2.8%	53.4%	61.7%	38.3%	100.0%	589,454	77,031	246,164	472,233	8,948,981	10,333,863	6,411,985	16,745,848
07-Real Estate Management & Development	3,919,873		3,919,873		3.5%	0.5%	1.5%	2.8%	53.4%	61.7%	38.3%	100.0%	137,980	18,031	57,622	110,540	2,094,780	2,418,954	1,500,919	3,919,873
08-Capital Finance	1,099,554		1,099,554		3.5%	0.5%	1.5%	2.8%	53.4%	61.7%	38.3%	100.0%	38,704	5,058	16,163	31,007	587,602	678,535	421,019	1,099,554
09-Police	31,331,802	31,331,802			0.0%	0.0%	0.0%	27.9%	50.2%	78.1%	21.9%	100.0%	--	--	--	8,751,743	15,719,415	24,471,158	6,860,644	31,331,802
10-Governmental Affairs	446,482		446,482		3.5%	0.5%	1.5%	2.8%	53.4%	61.7%	38.3%	100.0%	15,716	2,054	6,563	12,591	238,600	275,524	170,958	446,482
11-Fire & Rescue	25,947,297	25,947,297			0.0%	0.0%	0.0%	0.0%	20.0%	20.0%	80.0%	100.0%	--	--	--	--	5,189,444	5,189,444	20,757,853	25,947,297
12-Fine Arts & Cultural Affairs	902,637		902,637		3.5%	0.5%	1.5%	2.8%	53.4%	61.7%	38.3%	100.0%	31,773	4,152	13,269	25,454	482,369	557,017	345,620	902,637
13-Contracts Administration	837,407		837,407		3.5%	0.5%	1.5%	2.8%	53.4%	61.7%	38.3%	100.0%	29,477	3,852	12,310	23,615	447,510	516,764	320,643	837,407
14-Maintenance	105,375,247	105,375,247			5.3%	1.4%	4.3%	0.0%	44.3%	55.3%	44.7%	100.0%	5,605,207	1,425,784	4,568,928	--	46,719,792	58,319,711	47,055,536	105,375,247
15-Facilities	2,768,434		2,768,434		0.0%	0.0%	0.0%	0.0%	0.0%	0.0%	100.0%	100.0%	--	--	--	--	--	--	2,768,434	2,768,434
15-Facilities Design--wayfinding/landscaping	2,856,694	2,856,694			0.0%	0.0%	0.0%	0.0%	60.0%	60.0%	40.0%	100.0%	--	--	--	--	1,714,016	1,714,016	--	2,856,694
15-Facilities Construction	--	--	--		0.0%	0.0%	0.0%	0.0%	100.0%	100.0%	0.0%	100.0%	--	--	--	--	--	--	--	--
16-Public & Customer Relations	1,772,932		1,772,932		3.5%	0.5%	1.5%	2.8%	53.4%	61.7%	38.3%	100.0%	62,407	8,155	26,062	49,997	947,455	1,094,076	678,856	1,772,932
17-Aviation Planning, Land Use & Grants	2,203,619		2,203,619		3.5%	0.5%	1.5%	2.8%	53.4%	61.7%	38.3%	100.0%	77,567	10,137	32,393	62,142	1,177,614	1,359,853	843,766	2,203,619
19-Program Controls	1,533,758		1,533,758		0.0%	0.0%	0.0%	0.0%	100.0%	100.0%	0.0%	100.0%	--	--	--	--	--	--	--	--
22-Information Systems - Administration	38,105,370		38,105,370		3.5%	0.5%	1.5%	2.8%	53.4%	61.7%	38.3%	100.0%	1,341,309	175,285	560,149	1,074,571	20,365,510	23,514,824	14,590,546	38,105,370
22-Information Systems (AOIS, NSS, Network Expan, Other)	0		--		0.0%	0.0%	0.0%	0.0%	20.0%	20.0%	80.0%	100.0%	--	--	--	--	--	--	--	--
24-Real Estate Management & Development	309,916		309,916		3.5%	0.5%	1.5%	2.8%	53.4%	61.7%	38.3%	100.0%	10,909	1,426	4,556	8,740	165,619	191,249	118,667	309,916
25-Airside Operations	8,902,483	8,902,483			0.0%	0.0%	0.0%	0.0%	37.3%	37.3%	62.7%	100.0%	--	--	--	--	3,318,668	3,318,668	5,583,815	8,902,483
26-Terminal Operations	13,592,529	13,592,529			39.3%	0.0%	0.0%	0.0%	60.7%	100.0%	0.0%	100.0%	5,335,311	--	--	--	8,257,218	13,592,529	--	13,592,529
27-Landside Operations	11,817,580		11,817,580		0.0%	0.0%	0.0%	0.0%	0.0%	0.0%	100.0%	100.0%	--	--	--	--	--	--	11,817,580	11,817,580
28-Cargo Development	--	--	--		0.0%	0.0%	0.0%	0.0%	0.0%	0.0%	100.0%	100.0%	--	--	--	--	--	--	--	--
30-Non-Departmental O&M	41,600,000	41,600,000			0.0%	0.0%	0.0%	0.0%	85.7%	85.7%	14.3%	100.0%	--	--	--	--	35,663,001	35,663,001	5,936,999	41,600,000
30-Non-Departmental G&A	16,388,298		16,388,298		3.5%	0.5%	1.5%	2.8%	53.4%	61.7%	38.3%	100.0%	576,868	75,386	240,908	462,150	8,757,906	10,113,219	6,275,079	16,388,298
30-Non-Departmental Deposits	159,069,829		159,069,829	159,069,829	0.0%	0.0%	0.0%	0.0%	0.0%	0.0%	100.0%	100.0%	--	--	--	--	--	--	159,069,829	159,069,829
-Subordinate Debt Payment	15,431,278		15,431,278	15,431,278	0.0%	0.0%	0.0%	0.0%	50.0%	50.0%	50.0%	100.0%	--	--	--	--	7,715,639	7,715,639	7,715,639	15,431,278
30-Non-Departmental Debt Service	372,107,000	21,655,382	55,000,000	350,451,619	1.4%	0.5%	3.5%	0.0%	73.4%	78.7%	21.3%	100.0%	4,047,094	1,308,644	9,683,524	86,447	205,853,113	220,978,822	96,128,178	317,107,000
31-Management Agreements	71,680,886	71,680,886			0.0%	0.0%	0.0%	0.0%	43.5%	43.5%	56.5%	100.0%	--	--	--	--	--	--	40,518,755	71,680,886
34-Minority Affairs	920,309		920,309		3.5%	0.5%	1.5%	2.8%	53.4%	61.7%	38.3%	100.0%	32,395	4,233	13,529	25,953	31,162,131	31,162,131	352,386	920,309
38-Civil Environmental Engineering	11,097,865		11,097,865		0.0%	0.0%	0.0%	0.0%	0.0%	0.0%	100.0%	100.0%	--	--	--	--	--	--	11,097,865	11,097,865
40-Security & Safety	15,152,188		15,152,188		3.5%	0.5%	1.5%	2.8%	53.4%	61.7%	38.3%	100.0%	533,357	69,700	222,737	427,292	8,097,329	9,350,415	5,801,773	15,152,188
42-Communications	665,573		665,573		3.5%	0.5%	1.5%	2.8%	53.4%	61.7%	38.3%	100.0%	23,428	3,062	9,784	18,769	355,682	410,725	254,848	665,573
43-Aviation Business Planning	--	--	--		3.5%	0.5%	1.5%	2.8%	53.4%	61.7%	38.3%	100.0%	--	--	--	--	--	--	--	--
44-Marketing	1,528,494		1,528,494		3.5%	0.5%	1.5%	2.8%	53.4%	61.7%	38.3%	100.0%	53,803	7,031	22,469	43,104	816,827	943,234	585,260	1,528,494
45-North Terminal Development	--	--	--		3.5%	0.5%	1.5%	2.8%	53.4%	61.7%	38.3%	100.0%	--	--	--	--	--	--	--	--
33-AVIATION DEVELOPMENT FUND	--	--	--		0.0%	0.0%	0.0%	0.0%	0.0%	0.0%	100.0%	100.0%	--	--	--	--	--	--	--	--
47-Professional Compliance	1,331,293		1,331,293		3.5%	0.5%	1.5%	2.8%	53.4%	61.7%	38.3%	100.0%	46,862	6,124	19,570	37,542	711,443	821,541	509,752	1,331,293
48-Commercial Operations	--	--	--		3.5%	0.5%	1.5%	2.8%	53.4%	61.7%	38.3%	100.0%	--	--	--	--	--	--	--	--
53-Facilities Contract Management	--	--	--		3.5%	0.5%	1.5%	2.8%	53.4%	61.7%	38.3%	100.0%	--	--	--	--	--	--	--	--
50-Noise Abatement	847,151		847,151		0.0%	0.0%	0.0%	0.0%	0.0%	0.0%	100.0%	100.0%	--	--	--	--	--	--	847,151	847,151
51-Commodities Management	3,561,847		3,561,847		3.5%	0.5%	1.5%	2.8%	53.4%	61.7%	38.3%	100.0%	125,377	16,384	52,359	100,444	1,903,451	2,198,016	1,363,831	3,561,847
52-Protocol & International Affairs	1,017,403		1,017,403		3.5%	0.5%	1.5%	2.8%	53.4%	61.7%	38.3%	100.0%	35,813	4,680	14,956	28,691	543,700	627,839	389,564	1,017,403
55-Financial Planning & Performance Analysis	424,437		424,437		3.5%	0.5%	1.5%	2.8%	53.4%	61.7%	38.3%	100.0%	14,940	1,952	6,239	11,969	226,819	261,920	162,517	424,437
56-Operations	1,392,793		1,392,793		3.5%	0.5%	1.5%	2.8%	53.4%	61.7%	38.3%	100.0%	49,026	6,407	20,474	39,277	744,309	859,493	533,300	1,392,793
57-Facilities Development	176,014		176,014		3.5%	0.5%	1.5%	2.8%	53.4%	61.7%	38.3%	100.0%	6,196	810	2,587	4,964	94,062	108,618	67,396	176,014
58-Facilities Management	1,479,137		1,479,137		3.5%	0.5%	1.5%	2.8%	53.4%	61.7%	38.3%	100.0%	52,066	6,804	21,743	41,712	790,451	912,775	566,362	1,479,137
59-Security	--	--	--		3.5%	0.5%	1.5%	2.8%	53.4%	61.7%	38.3%	100.0%	--	--	--	--	--	--	--	--
60-Grants Management	--	--	--		3.5%	0.5%	1.5%	2.8%	53.4%	61.7%	38.3%	100.0%	--	--	--	--	--	--	--	--
61-Strategic Planning	--	--	--		3.5%	0.5%	1.5%	2.8%	53.4%	61.7%	38.3%	100.0%	--	--	--	--	--	--	--	--
62-Security Operations Command Center	--	--	--		3.5%	0.5%	1.5%	2.8%	53.4%	61.7%	38.3%	100.0%	--	--	--	--	--	--	--	--
63-Cash Management	1,590,077		1,590,077		3.5%	0.5%	1.5%	2.8%	53.4%	61.7%	38.3%	100.0%	55,971	7,314	23,374	44,840	849,737	981,237	608,840	1,590,077
64-Airport Concession & Business Development	2,997,624		2,997,624		3.5%	0.5%	1.5%	2.8%	53.4%	61.7%	38.3%	100.0%	105,516	13,789	44,065	84,533	1,601,930	1,849,834	1,147,790	2,997,624
65-Communications, Hospitality & Transportation	590,434		590,434		3.5%	0.5%	1.5%	2.8%	53.4%	61.7%	38.3%	100.0%	20,783	2,716	8,679	16,650	315,528	364,357	226,077	590,434
37-General Aviation Airports	--	--	--		0.0%	0.0%	0.0%	0.0%	0.0%	0.0%	100.0%	100.0%	--	--	--	--	--	--	0	0
BUDGET EXPENSE AMOUNTS	\$1,001,537,445	\$334,759,900	\$199,681,514	\$524,952,725	2.1%	0.3%	1.7%	1.3%	45.4%											

ALLOCATION OF OPERATING AND DEBT SERVICE COSTS BY COST CENTER WORKSHEET

Terminal Rental Rate Calculation Model
Miami-Dade County Aviation Department
Miami International Airport
FY 2014-15

Division-Description	Budgeted FY 2014-15	Direct Expense	G&A Expense	Transfers	International Facilities Percentage	Domestic Baggage Claim Percentage	Outbound Baggage Makeup Percentage	Screening Percentage	Terminal Rent Percentage	Total Terminal Percentage	Non-Terminal Percentage	Total	International Facilities Expense	Domestic Baggage Claim Expense	Outbound Baggage Makeup Expense	Screening Expense	Terminal Rent Expense	Total Terminal Expenses	Non-Terminal Expenses	Total Expenses
ALLOCATION OF O&M BY DIVISIONS																				
ALLOCATION OF POLICE O&M																				
Administration	\$190,420								78.1%	78.1%	21.9%	100.0%	--	--	--	--	\$148,724	\$148,724	\$41,696	\$190,420
Uniform Patrol	29,238,556				0.0%	0.0%	0.0%	29.9%	50.0%	79.9%	20.1%	100.0%	--	--	--	8,751,743	14,619,278	23,371,021	5,867,535	29,238,556
General Investigation Unit	1,902,826				0.0%	0.0%	0.0%	0.0%	50.0%	50.0%	50.0%	100.0%	--	--	--	--	951,413	951,413	951,413	1,902,826
09-TOTAL POLICE O&M	\$31,331,802	\$31,331,802			0.0%	0.0%	0.0%	27.9%	50.2%	78.1%	21.9%	100.0%	0	0	0	\$8,751,743	\$15,719,415	\$24,471,158	\$6,860,644	\$31,331,802
ALLOCATION OF FIRE-RESCUE O&M																				
Administration	\$24,924,483				0	0	0	0	20.0%	20.0%	80.0%	100.0%	--	--	--	--	\$4,984,882	\$4,984,882	\$19,939,601	\$24,924,483
Rescue	--				0.0%	0.0%	0.0%	0.0%	20.0%	20.0%	35.0%	100.0%	--	--	--	--	0	0	0	0
Inspection	--				0.0%	0.0%	0.0%	0.0%	20.0%	20.0%	80.0%	100.0%	--	--	--	--	--	--	--	0
Fire-fighters	--				0.0%	0.0%	0.0%	0.0%	20.0%	20.0%	80.0%	100.0%	--	--	--	--	0	0	0	0
Fire Technician	1,022,814				0.0%	0.0%	0.0%	0.0%	20.0%	20.0%	80.0%	100.0%	--	--	--	--	204,562	204,562	818,251	1,022,813
11-TOTAL FIRE-RESCUE O&M	\$25,947,297	\$25,947,297			0.0%	0.0%	0.0%	0.0%	20.0%	20.0%	80.0%	100.0%	0	0	0	0	\$5,189,444	\$5,189,444	\$20,757,852	\$25,947,296
ALLOCATION OF MAINTENANCE O&M																				
Administration	\$0				0	0	0	0	55.3%	55.3%	44.7%	100.0%	--	--	--	--	\$0	\$0	\$0	\$0
Security Infrastructure	2,292,791				0.0%	0.0%	0.0%	0.0%	0.0%	0.0%	100.0%	100.0%	--	--	--	--	--	--	2,292,791	2,292,791
Administration (Engineering Design & Commissioning)	3,359,966				0.0%	0.0%	0.0%	0.0%	0.0%	0.0%	100.0%	100.0%	--	--	--	--	--	--	3,359,966	3,359,966
Capital Compensation (Maint Construction Team)	1,324,747				0.0%	0.0%	0.0%	0.0%	0.0%	0.0%	100.0%	100.0%	--	--	--	--	--	--	1,324,747	1,324,747
Service Station	1,871,000				0.0%	0.0%	0.0%	0.0%	0.0%	0.0%	100.0%	100.0%	--	--	--	--	--	--	1,871,000	1,871,000
Plumbing	2,162,279				0.0%	0.0%	0.0%	0.0%	68.0%	68.0%	32.0%	100.0%	--	--	--	--	1,470,350	1,470,350	691,929	2,162,279
Electric	3,465,902				0.0%	0.0%	0.0%	0.0%	90.0%	90.0%	10.0%	100.0%	--	--	--	--	3,119,312	3,119,312	346,590	3,465,902
Air Conditioning	4,140,539				0.0%	0.0%	0.0%	0.0%	100.0%	100.0%	0.0%	100.0%	--	--	--	--	4,140,539	4,140,539	0	4,140,539
Paint	--				0.0%	0.0%	0.0%	0.0%	50.0%	50.0%	50.0%	100.0%	--	--	--	--	0	0	0	0
Grounds Maintenance-Landscape	3,427,045				0.0%	0.0%	0.0%	0.0%	0.0%	0.0%	100.0%	100.0%	--	--	--	--	--	--	3,427,045	3,427,045
Airfield Lighting	1,093,391				0.0%	0.0%	0.0%	0.0%	0.0%	0.0%	100.0%	100.0%	--	--	--	--	--	--	1,093,391	1,093,391
Public Works	1,928,627				0.0%	0.0%	0.0%	0.0%	2.0%	2.0%	98.0%	100.0%	--	--	--	--	38,573	38,573	1,890,054	1,928,627
Incinerator (Waste Management)	4,465,014				0.0%	0.0%	0.0%	0.0%	100.0%	100.0%	0.0%	100.0%	--	--	--	--	4,465,014	4,465,014	0	4,465,014
Tamiami Airport Maintenance	785,621				0.0%	0.0%	0.0%	0.0%	0.0%	0.0%	100.0%	100.0%	--	--	--	--	--	--	785,621	785,621
Opa-Locka Airport Maintenance	578,791				0.0%	0.0%	0.0%	0.0%	0.0%	0.0%	100.0%	100.0%	--	--	--	--	--	--	578,791	578,791
Relamping - Systemwide	2,068,648				0.0%	0.0%	0.0%	0.0%	0.0%	0.0%	100.0%	100.0%	--	--	--	--	--	--	2,068,648	2,068,648
Fleet Management - Heavy Auto Equipment	3,165,115				0.0%	0.0%	0.0%	0.0%	0.0%	0.0%	100.0%	100.0%	--	--	--	--	--	--	3,165,115	3,165,115
Mechanical Conveyors	220,000				20.0%	40.0%	20.0%	0.0%	20.0%	100.0%	0.0%	100.0%	44,000	88,000	44,000	--	44,000	220,000	--	220,000
Mechanical Loading Bridges	3,320,087				0.0%	0.0%	0.0%	0.0%	0.0%	0.0%	100.0%	100.0%	--	--	--	--	--	--	3,320,087	3,320,087
Mechanical General	734,710				0.0%	0.0%	0.0%	0.0%	20.0%	20.0%	80.0%	100.0%	--	--	--	--	146,942	146,942	587,768	734,710
Terminal Maintenance	1,640,844				0.0%	0.0%	0.0%	0.0%	100.0%	100.0%	0.0%	100.0%	--	--	--	--	1,640,844	1,640,844	0	1,640,844
Telecommunication	--				10.0%	5.0%	4.0%	1.0%	60.0%	80.0%	20.0%	100.0%	--	--	--	--	--	--	--	0
Striping	1,649,051				0.0%	0.0%	0.0%	0.0%	0.0%	0.0%	100.0%	100.0%	--	--	--	--	0	0	1,649,051	1,649,051
Terminal Maintenance - Shop 82	977,100				0.0%	0.0%	0.0%	0.0%	80.0%	80.0%	20.0%	100.0%	--	--	--	--	781,680	781,680	195,420	977,100
The Roof Shop 63	--				0.0%	0.0%	0.0%	0.0%	100.0%	100.0%	0.0%	100.0%	--	--	--	--	0	0	--	0

ALLOCATION OF OPERATING AND DEBT SERVICE COSTS BY COST CENTER WORKSHEET

Terminal Rental Rate Calculation Model
Miami-Dade County Aviation Department
Miami International Airport
FY 2014-15

Division-Description	Budgeted FY 2014-15	Direct Expense	G&A Expense	Transfers	International Facilities Percentage	Domestic Baggage Claim Percentage	Outbound Baggage Makeup Percentage	Screening Percentage	Terminal Rent Percentage	Total Terminal Percentage	Non-Terminal Percentage	Total	International Facilities Expense	Domestic Baggage Claim Expense	Outbound Baggage Makeup Expense	Screening Expense	Terminal Rent Expense	Total Terminal Expenses	Non-Terminal Expenses	Total Expenses
Airport Fire Suppression Technicians	4,505,185				0.0%	0.0%	0.0%	0.0%	70.0%	70.0%	30.0%	100.0%	--	--	--	--	3,153,630	3,153,630	1,351,556	4,505,186
A/C Control	--				0.0%	0.0%	0.0%	0.0%	100.0%	100.0%	0.0%	100.0%	--	--	--	--	0	0	--	0
Generators	727,853				0.0%	0.0%	0.0%	0.0%	60.0%	60.0%	40.0%	100.0%	--	--	--	--	436,712	436,712	291,141	727,853
Maint-Bldg Management & Control	750,800				0.0%	0.0%	0.0%	0.0%	95.0%	95.0%	5.0%	100.0%	--	--	--	--	713,260	713,260	37,540	750,800
Maint-Video Shop	856,311				0.0%	0.0%	0.0%	0.0%	95.0%	95.0%	5.0%	100.0%	--	--	--	--	813,495	813,495	42,816	856,311
Maint-Locksmith Shop	505,487				0.0%	0.0%	0.0%	0.0%	85.0%	85.0%	15.0%	100.0%	--	--	--	--	429,664	429,664	75,823	505,487
Maint-Quality Assurance	612,782				0.0%	0.0%	0.0%	0.0%	100.0%	100.0%	0.0%	100.0%	--	--	--	--	612,782	612,782	--	612,782
Maint-Planning & Program Management	--				0.0%	0.0%	0.0%	0.0%	100.0%	100.0%	0.0%	100.0%	--	--	--	--	0	0	--	0
Facilities-Initiation Engineer and Maintenance	--				0.0%	0.0%	0.0%	0.0%	100.0%	100.0%	0.0%	100.0%	--	--	--	--	0	0	--	0
Maint-Safety & Customer Serv.	--				0.0%	0.0%	0.0%	0.0%	100.0%	100.0%	0.0%	100.0%	--	--	--	--	0	0	--	0
Manager - Facilities Maintenance	--				0.0%	0.0%	0.0%	0.0%	100.0%	100.0%	0.0%	100.0%	--	--	--	--	0	0	--	0
Pan Am ADF (Lift Stations)	2,387,565				0.0%	0.0%	0.0%	0.0%	0.0%	0.0%	100.0%	100.0%	--	--	--	--	--	--	2,387,565	2,387,565
ADF Maint West Cargo (Tract I)	2,337,023				0.0%	0.0%	0.0%	0.0%	0.0%	0.0%	100.0%	100.0%	--	--	--	--	--	--	2,337,023	2,337,023
Warehouse	--				0.0%	0.0%	0.0%	0.0%	60.0%	60.0%	40.0%	100.0%	--	--	--	--	0	0	--	0
Contracts & Construction	992,933				0.0%	0.0%	0.0%	0.0%	0.0%	0.0%	100.0%	100.0%	--	--	--	--	--	--	992,933	992,933
Terminal Maintenance - Contracts (Electrical)	287,678				0.0%	0.0%	0.0%	0.0%	0.0%	0.0%	100.0%	100.0%	--	--	--	--	--	--	287,678	287,678
Outside Contractuals	28,847,959				15.4%	4.6%	15.7%	0.0%	43.5%	79.2%	20.8%	100.0%	4,451,291	1,337,784	4,524,928	--	12,537,964	22,851,967	5,995,992	28,847,959
Maint - MIA Contract Management	7,329,353				0.0%	0.0%	0.0%	0.0%	50.0%	50.0%	50.0%	100.0%	--	--	--	--	3,664,677	3,664,677	3,664,677	7,329,354
Building Mgmt Control (Terminal A/C)	2,573,277				0.0%	0.0%	0.0%	0.0%	100.0%	100.0%	0.0%	100.0%	--	--	--	--	2,573,277	2,573,277	0	2,573,277
Planning & Control	--				0.0%	0.0%	0.0%	0.0%	50.0%	50.0%	50.0%	100.0%	--	--	--	--	--	--	--	0
Other Contract Services	--				0.0%	0.0%	0.0%	0.0%	50.0%	50.0%	50.0%	100.0%	--	--	--	--	--	--	--	0
Building 100	--				0.0%	0.0%	0.0%	0.0%	0.0%	0.0%	100.0%	100.0%	--	--	--	--	--	--	--	0
Landscape Projects	60,000				0.0%	0.0%	0.0%	0.0%	0.0%	0.0%	100.0%	100.0%	--	--	--	--	0	0	60,000	60,000
Terminal-Wide Security (CCTV F034F)	--				0.0%	0.0%	0.0%	0.0%	100.0%	100.0%	0.0%	100.0%	--	--	--	--	0	0	--	0
Outside Contractuals	--				0.0%	0.0%	0.0%	0.0%	0.0%	0.0%	0.0%	0.0%	--	--	--	--	--	--	--	0
Other Contract Services	--				0.0%	0.0%	0.0%	0.0%	50.0%	50.0%	50.0%	100.0%	--	--	--	--	--	--	--	0
APM - Airport People Mover (CC-"E" Satellite Train)	2,219,832				50.0%	0.0%	0.0%	0.0%	50.0%	100.0%	0.0%	100.0%	1,109,916	--	--	--	1,109,916	2,219,832	0	2,219,832
Special Projects	--				0.0%	0.0%	0.0%	0.0%	90.0%	90.0%	10.0%	100.0%	--	--	--	--	0	0	--	0
Special Projects	--				0.0%	0.0%	0.0%	0.0%	0.0%	0.0%	100.0%	100.0%	--	--	--	--	0	0	--	0
Facilities Maintenance	1,233,648				0.0%	0.0%	0.0%	0.0%	90.0%	90.0%	10.0%	100.0%	--	--	--	--	1,110,283	1,110,283	123,365	1,233,648
Technical Support	1,619,126				0.0%	0.0%	0.0%	0.0%	90.0%	90.0%	10.0%	100.0%	--	--	--	--	1,457,213	1,457,213	161,913	1,619,126
Interiors	1,298,246				0.0%	0.0%	0.0%	0.0%	90.0%	90.0%	10.0%	100.0%	--	--	--	--	1,168,421	1,168,421	129,825	1,298,246
Signage Design	1,558,921				0.0%	0.0%	0.0%	0.0%	70.0%	70.0%	30.0%	100.0%	--	--	--	--	1,091,245	1,091,245	467,676	1,558,921
14-TOTAL MAINTENANCE O&M	\$105,375,247	\$105,375,247			5.3%	1.4%	4.3%	0.0%	44.3%	55.3%	44.7%	100.0%	\$5,605,207	\$1,425,784	\$4,568,928	\$0	\$46,719,793	\$58,319,712	\$47,055,537	\$105,375,249
ALLOCATION OF INFORMATION SYSTEMS																				
Administration	\$21,294,041				0	0	0	0	52.8%	52.8%	47.2%	100.0%	--	--	--	--	11,236,199	11,236,199	\$10,057,842	\$21,294,041
Telephone	7,500,000				0.0%	0.0%	0.0%	0.0%	67.0%	67.0%	33.0%	100.0%	--	--	--	--	5,025,000	5,025,000	2,475,000	7,500,000
CUTE, CUSS Contract	4,827,208				0.0%	0.0%	0.0%	0.0%	10.0%	10.0%	90.0%	100.0%	--	--	--	--	482,721	482,721	4,344,487	4,827,208
AOIS, NSS and Other O/S Contracts	4,484,121				0.0%	0.0%	0.0%	0.0%	75.0%	75.0%	25.0%	100.0%	--	--	--	--	3,363,091	3,363,091	1,121,030	4,484,121
22-TOTAL INFORMATION SYSTEMS O&M	\$38,105,370	\$38,105,370			0.0%	0.0%	0.0%	0.0%	52.8%	52.8%	47.2%	100.0%	\$0	\$0	\$0	\$0	\$20,107,011	\$20,107,011	\$17,998,359	\$38,105,370
ALLOCATION OF AIRSIDE OPS O&M																				
Administration	\$723,483				0	0	0	0	37.3%	37.3%	62.7%	100.0%	--	--	--	--	269,700	269,700	\$453,783	\$723,483
Ramp Control	2,736,786				0.0%	0.0%	0.0%	0.0%	0.0%	0.0%	100.0%	100.0%	--	--	--	--	--	--	2,736,786	2,736,786
Access Control	2,393,246				0.0%	0.0%	0.0%	0.0%	0.0%	0.0%	100.0%	100.0%	--	--	--	--	--	--	2,393,246	2,393,246
Gate Assignment	3,048,968				0.0%	0.0%	0.0%	0.0%	100.0%	100.0%	0.0%	100.0%	--	--	--	--	3,048,968	3,048,968	0	3,048,968
Noise Control	--				0.0%	0.0%	0.0%	0.0%	0.0%	0.0%	100.0%	100.0%	--	--	--	--	--	--	--	0
25-TOTAL AIRSIDE OPS O&M	\$8,902,483	\$8,902,483			0.0%	0.0%	0.0%	0.0%	37.3%	37.3%	62.7%	100.0%	\$0	\$0	\$0	\$0	\$3,318,668	\$3,318,668	\$5,583,815	\$8,902,483

ALLOCATION OF OPERATING AND DEBT SERVICE COSTS BY COST CENTER WORKSHEET
Terminal Rental Rate Calculation Model
Miami-Dade County Aviation Department
Miami International Airport
FY 2014-15

Division-Description	Budgeted FY 2014-15	Direct Expense	G&A Expense	Transfers	International Facilities Percentage	Domestic Baggage Claim Percentage	Outbound Baggage Makeup Percentage	Screening Percentage	Terminal Rent Percentage	Total Terminal Percentage	Non-Terminal Percentage	Total	International Facilities Expense	Domestic Baggage Claim Expense	Outbound Baggage Makeup Expense	Screening Expense	Terminal Rent Expense	Total Terminal Expenses	Non-Terminal Expenses	Total Expenses
ALLOCATION OF TERMINAL OPS O&M																				
Administration	\$2,350,606				0	0	0	0	100.0%	100.0%	0.0%	100.0%	--	--	--	--	\$2,350,606	\$2,350,606	--	\$2,350,606
Domestic Operations	4,150,851				0.0%	0.0%	0.0%	0.0%	100.0%	100.0%	0.0%	100.0%	--	--	--	--	4,150,851	4,150,851	--	4,150,851
International Operations	5,335,311				100.0%	0.0%	0.0%	0.0%	0.0%	100.0%	0.0%	100.0%	5,335,311	--	--	--	--	5,335,311	--	5,335,311
Tour & Charter Operations	--				0.0%	0.0%	0.0%	0.0%	100.0%	100.0%	0.0%	100.0%	--	--	--	--	--	--	--	0
Contract Services	953,750				0.0%	0.0%	0.0%	0.0%	100.0%	100.0%	0.0%	100.0%	--	--	--	--	953,750	953,750	--	953,750
Westinghouse-International Shuttle	--				66.7%	0.0%	0.0%	0.0%	33.3%	100.0%	0.0%	100.0%	--	--	--	--	--	--	--	0
Westinghouse-System Improvements	--				66.7%	0.0%	0.0%	0.0%	33.3%	100.0%	0.0%	100.0%	--	--	--	--	--	--	--	0
LED Sign Maintenance	--				0.0%	100.0%	0.0%	0.0%	0.0%	100.0%	0.0%	100.0%	--	--	--	--	--	--	--	0
D-FIS Kiosks - Int'l Inbound	--				100.0%	0.0%	0.0%	0.0%	0.0%	100.0%	0.0%	100.0%	--	--	--	--	--	--	--	0
ITBF Guard Service	--				100.0%	0.0%	0.0%	0.0%	0.0%	100.0%	0.0%	100.0%	--	--	--	--	--	--	--	0
Passenger & Visitor services	802,011				0.0%	0.0%	0.0%	0.0%	100.0%	100.0%	0.0%	100.0%	--	--	--	--	802,011	802,011	--	802,011
26-TOTAL TERMINAL OPS O&M	\$13,592,529	\$13,592,529			39.3%	0.0%	0.0%	0.0%	60.7%	100.0%	0.0%	100.0%	\$5,335,311	\$0	\$0	\$0	\$8,257,218	\$13,592,529	\$0	\$13,592,529
ALLOCATION OF LANDSIDE OPS O&M																				
Administration	\$1,336,090								0.0%	0.0%	100.0%	100.0%	--	--	--	--	--	--	\$1,336,090	\$1,336,090
Ramp & Garage Control	9,991,512				0.0%	0.0%	0.0%	0.0%	0.0%	0.0%	100.0%	100.0%	--	--	--	--	--	--	9,991,512	9,991,512
Towing	--				0.0%	0.0%	0.0%	0.0%	0.0%	0.0%	100.0%	100.0%	--	--	--	--	--	--	0	0
Taxi	--				0.0%	0.0%	0.0%	0.0%	0.0%	0.0%	100.0%	100.0%	--	--	--	--	--	--	0	0
Identification	--				0.0%	0.0%	0.0%	0.0%	0.0%	0.0%	100.0%	100.0%	--	--	--	--	--	--	0	0
Contract Services	--				0.0%	0.0%	0.0%	0.0%	0.0%	0.0%	100.0%	100.0%	--	--	--	--	--	--	0	0
Control Function	379,018				0.0%	0.0%	0.0%	0.0%	0.0%	0.0%	100.0%	100.0%	--	--	--	--	--	--	379,018	379,018
Employee Parking Operations	110,960				0.0%	0.0%	0.0%	0.0%	0.0%	0.0%	100.0%	100.0%	--	--	--	--	--	--	110,960	110,960
27-TOTAL LANDSIDE OPS O&M	\$11,817,580	\$11,817,580			0.0%	0.0%	0.0%	0.0%	0.0%	0.0%	100.0%	100.0%	\$0	\$0	\$0	\$0	\$0	\$0	\$11,817,580	\$11,817,580
ALLOCATION OF NON-DEPT O&M																				
Telephone	\$500,000				0.0%	0.0%	0.0%	0.0%	67.0%	67.0%	33.0%	100.0%	--	--	--	--	\$335,000	\$335,000	\$165,000	\$500,000
Electrical Service	32,000,000				0.0%	0.0%	0.0%	0.0%	85.0%	85.0%	15.0%	100.0%	--	--	--	--	27,200,000	27,200,000	4,799,999	31,999,999
Natural Gas Service	100,000				0.0%	0.0%	0.0%	0.0%	28.0%	28.0%	72.0%	100.0%	--	--	--	--	28,000	28,000	72,000	100,000
Water & Sewer Service	9,000,000				0.0%	0.0%	0.0%	0.0%	90.0%	90.0%	10.0%	100.0%	--	--	--	--	8,100,000	8,100,000	900,000	9,000,000
30-TOTAL NON-DEPARTMENTAL O&M	\$41,600,000				0.0%	0.0%	0.0%	0.0%	85.7%	85.7%	14.3%	100.0%	\$0	\$0	\$0	\$0	\$35,663,000	\$35,663,000	\$5,936,999	\$41,599,999

ALLOCATION OF OPERATING AND DEBT SERVICE COSTS BY COST CENTER WORKSHEET
Terminal Rental Rate Calculation Model
Miami-Dade County Aviation Department
Miami International Airport
FY 2014-15

Division-Description	Budgeted FY 2014-15	Direct Expense	G&A Expense	Transfers	International Facilities Percentage	Domestic Baggage Claim Percentage	Outbound Baggage Makeup Percentage	Screening Percentage	Terminal Rent Percentage	Total Terminal Percentage	Non-Terminal Percentage	Total	International Facilities Expense	Domestic Baggage Claim Expense	Outbound Baggage Makeup Expense	Screening Expense	Terminal Rent Expense	Total Terminal Expenses	Non-Terminal Expenses	Total Expenses
ALLOCATION OF MGMT AGREEMENTS																				
Sky Caps / Porter	--				100.0%	0.0%	0.0%	0.0%	0.0%	100.0%	0.0%	100.0%	\$0	--	--	--	--	--	--	\$0
Smart Carte FIS	--				100.0%	0.0%	0.0%	0.0%	0.0%	100.0%	0.0%	100.0%	\$0	--	--	--	--	--	--	\$0
TWOV (Transit Without Visa)	--				100.0%	0.0%	0.0%	0.0%	0.0%	100.0%	0.0%	100.0%	--	--	--	--	--	--	--	0
Unico/Vista/N&K Janitorial	33,835,104				0.0%	0.0%	0.0%	0.0%	92.1%	92.1%	7.9%	100.0%	--	--	--	--	31,162,131	31,162,131	2,672,973	33,835,104
Other Management Contracts	37,845,782				0.0%	0.0%	0.0%	0.0%	0.0%	0.0%	100.0%	100.0%	--	--	--	--	--	--	37,845,782	37,845,782
31-TOTAL MGMT AGREEMENTS	\$71,680,886	\$71,680,886			0.0%	0.0%	0.0%	0.0%	43.5%	43.5%	56.5%	100.0%	\$0	\$0	\$0	\$0	\$31,162,131	\$31,162,131	\$40,518,755	\$71,680,886
ALLOCATION OF G/A AIRPORT O&M	\$3,041,984	\$3,041,984											\$0	\$0	\$0	\$0	\$0	\$0	\$3,041,984	\$3,041,984
TOTAL DIRECT O&M	\$351,395,178												\$10,940,518	\$1,425,784	\$4,568,928	\$8,751,743	\$166,136,680	\$191,823,653	\$159,571,525	\$351,395,178
ALLOCATION OF MAINT. O&M BY SUBDIVISIONS																				
ALLOCATION OF CONTRACT SERVICES																				
Outside Maintenance-Motor Vehicles	--				0.0%	0.0%	0.0%	0.0%	0.0%	0.0%	100.0%	100.0%	--	--	--	--	--	--	--	\$0
Pest Control	--				0.0%	0.0%	0.0%	0.0%	100.0%	100.0%	0.0%	100.0%	--	--	--	--	--	--	--	0
Other Outside Maintenance	--				0.0%	0.0%	0.0%	0.0%	0.0%	0.0%	100.0%	100.0%	--	--	--	--	--	--	--	0
Employee Shuttle	--				0.0%	0.0%	0.0%	0.0%	0.0%	0.0%	100.0%	100.0%	--	--	--	--	--	--	--	0
Laboratory Services	--				0.0%	0.0%	0.0%	0.0%	100.0%	100.0%	0.0%	100.0%	--	--	--	--	--	--	--	0
Water Treatment Service	--				0.0%	0.0%	0.0%	0.0%	100.0%	100.0%	0.0%	100.0%	--	--	--	--	--	--	--	0
Daimler-Chrysler monthly	--				66.7%	0.0%	0.0%	0.0%	33.3%	100.0%	0.0%	100.0%	--	--	--	--	--	--	--	0
Automated People Mover (NTD Train)	6,996,000				25.0%	0.0%	0.0%	0.0%	75.0%	100.0%	0.0%	100.0%	1,749,000	--	--	--	5,247,000	6,996,000	--	6,996,000
MIA Mover (RCF Train)	4,273,606				0.0%	0.0%	0.0%	0.0%	0.0%	0.0%	100.0%	100.0%	--	--	--	--	--	--	4,273,606	4,273,606
JBT & Oxford Combined BHS Contract	8,300,000				32.0%	15.0%	53.0%	0.0%	0.0%	100.0%	0.0%	100.0%	2,656,000	1,245,000	4,399,000	--	--	8,300,000	--	8,300,000
Reimbursements for Outside Contracts - L Services	--				0.0%	0.0%	0.0%	0.0%	100.0%	100.0%	0.0%	100.0%	--	--	--	--	--	--	--	0
Outside Maintenance-ASI O/B baggage	157,744				0.0%	50.0%	50.0%	0.0%	0.0%	100.0%	0.0%	100.0%	--	78,872	78,872	--	--	157,744	--	157,744
Outside Maintenance-Terminal Elevator (Schindler)	1,599,307				0.0%	0.0%	0.0%	0.0%	90.0%	90.0%	10.0%	100.0%	--	--	--	--	1,439,376	1,439,376	159,931	1,599,307
Outside Maintenance-Terminal Elevator (Obs)	518,803				0.0%	0.0%	0.0%	0.0%	3.0%	3.0%	97.0%	100.0%	--	--	--	--	15,564	15,564	503,239	518,803
Outside Maintenance-Terminal Elevator (Thyssen)	900,548				0.0%	0.0%	0.0%	0.0%	30.0%	30.0%	70.0%	100.0%	--	--	--	--	270,164	270,164	630,384	900,548
Outside Maintenance-Terminal Elevator (Kone)	3,821,551				0.0%	0.0%	0.0%	0.0%	95.0%	95.0%	5.0%	100.0%	--	--	--	--	3,630,473	3,630,473	191,078	3,821,551
Outside Maintenance-Bldg 100 Elevator (Mowrey)	80,400				0.0%	0.0%	0.0%	0.0%	0.0%	0.0%	100.0%	100.0%	--	--	--	--	--	--	80,400	80,400
Building Maintenance	--				0.0%	0.0%	0.0%	0.0%	50.0%	50.0%	50.0%	100.0%	--	--	--	--	--	--	--	0
Painting	--				0.0%	0.0%	0.0%	0.0%	50.0%	50.0%	50.0%	100.0%	--	--	--	--	--	--	--	0
Baggage (other outside contractual)	--				0.0%	100.0%	0.0%	0.0%	0.0%	100.0%	0.0%	100.0%	--	--	--	--	--	--	--	0
Plumbing	--				0.0%	0.0%	0.0%	0.0%	50.0%	50.0%	50.0%	100.0%	--	--	--	--	--	--	--	0
Electrical	--				0.0%	0.0%	0.0%	0.0%	50.0%	50.0%	50.0%	100.0%	--	--	--	--	--	--	--	0
Air Conditioning	--				0.0%	0.0%	0.0%	0.0%	45.0%	45.0%	55.0%	100.0%	--	--	--	--	--	--	--	0
Contract Asst - Canal	--				0.0%	0.0%	0.0%	0.0%	0.0%	0.0%	100.0%	100.0%	--	--	--	--	--	--	--	0
Building Exterior	--				0.0%	0.0%	0.0%	0.0%	60.0%	60.0%	40.0%	100.0%	--	--	--	--	--	--	--	0
Doors - Automatic	1,900,000				0.0%	0.0%	0.0%	0.0%	95.0%	95.0%	5.0%	100.0%	--	--	--	--	1,805,000	1,805,000	95,000	1,900,000
Electrical	--				0.0%	0.0%	0.0%	0.0%	0.0%	0.0%	100.0%	100.0%	--	--	--	--	--	--	--	0
Fence	--				0.0%	0.0%	0.0%	0.0%	0.0%	0.0%	100.0%	100.0%	--	--	--	--	--	--	--	0
Fire Protection System	--				0.0%	0.0%	0.0%	0.0%	50.0%	50.0%	50.0%	100.0%	--	--	--	--	--	--	--	0
TOTAL CONTRACT SERVICES	\$28,547,959				15.4%	4.6%	15.7%	0.0%	43.5%	79.2%	20.8%	100.0%	\$4,405,000	\$1,323,872	\$4,477,872	\$0	\$12,407,577	\$22,614,321	\$5,933,638	\$28,547,959

ALLOCATION OF OPERATING AND DEBT SERVICE COSTS BY COST CENTER WORKSHEET
Terminal Rental Rate Calculation Model
Miami-Dade County Aviation Department
Miami International Airport
FY 2014-15

Division-Description	Budgeted FY 2014-15	Direct Expense	G&A Expense	Transfers	International Facilities Percentage	Domestic Baggage Claim Percentage	Outbound Baggage Makeup Percentage	Screening Percentage	Terminal Rent Percentage	Total Terminal Percentage	Non-Terminal Percentage	Total	International Facilities Expense	Domestic Baggage Claim Expense	Outbound Baggage Makeup Expense	Screening Expense	Terminal Rent Expense	Total Terminal Expenses	Non-Terminal Expenses	Total Expenses
ALLOCATION OF PLANNING & CONTROL																				
Energy Management System	--				0.0%	0.0%	0.0%	0.0%	95.0%	95.0%	5.0%	100.0%	--	--	--	--	--	--	--	--
Computer Software Support	--				0.0%	0.0%	0.0%	0.0%	0.0%	0.0%	100.0%	100.0%	--	--	--	--	--	--	--	--
Planning & Control	--				0.0%	0.0%	0.0%	0.0%	100.0%	100.0%	0.0%	100.0%	--	--	--	--	--	--	--	--
TOTAL PLANNING & CONTROL	\$0				\$0	\$0	\$0	\$0	\$0	\$0	\$0	\$0	\$0	\$0	\$0	\$0	\$0	\$0	\$0	\$0
ALLOCATION OF LANDSCAPE PROJECTS																				
Computer Software	--				0.0%	0.0%	0.0%	0.0%	0.0%	0.0%	0.0%	0.0%	--	--	--	--	--	--	--	--
Plants & Grounds	--				0.0%	0.0%	0.0%	0.0%	0.0%	0.0%	100.0%	100.0%	--	--	--	--	--	--	--	--
Other Outside Contractuals	--				0.0%	0.0%	0.0%	0.0%	0.0%	0.0%	0.0%	0.0%	--	--	--	--	--	--	--	--
Landscape	--				0.0%	0.0%	0.0%	0.0%	0.0%	0.0%	100.0%	100.0%	--	--	--	--	--	--	--	--
Landscaping	--				0.0%	0.0%	0.0%	0.0%	0.0%	0.0%	100.0%	100.0%	--	--	--	--	--	--	--	--
Irrigation	--				0.0%	0.0%	0.0%	0.0%	2.0%	2.0%	98.0%	100.0%	--	--	--	--	--	--	--	--
TOTAL LANDSCAPE PROJECTS	\$0				\$0	\$0	\$0	\$0	\$0	\$0	\$0	\$0	\$0	\$0	\$0	\$0	\$0	\$0	\$0	\$0

	Direct Current Expenses	Direct Current Expense Allocation %
G&A ALLOCATION BASIS		
International Concourse	\$10,940,518	3.5%
Domestic Baggage Claim	1,425,784	0.5%
Outbound Baggage Makeup	4,568,928	1.5%
Screening	8,751,743	2.8%
Terminal Rent	166,136,680	53.4%
Total Terminal	\$191,823,653	61.7%
Non-Terminal	159,571,525	
Less Other Management Contracts	(40,518,755)	
Net Non-Terminal	\$119,052,770	38.3%
G&A Allocation Basis	\$310,876,423	100.0%

MANAGEMENT AGREEMENTS DETAIL	
HOTEL	\$9,323,376
AIRPORT PARKING	9,260,478
BAGGAGE STORAGE	--
SIRGANY CENTURY	--
LAMI - CLUBS	808,617
MIAP	0
TOP OF THE PORT	3,279,195
SIRGANY INTL	--
ALLIED AVIATION FUELING	6,053,381
MIDFIELD FUELING	2,086,661
SHUTTLE	7,034,075
SUBTOTAL	\$37,845,782
JANITORIAL N&K, UNICCO, VISTA	33,835,104
SMARTE CARTE FIS	0
QASI-BAGGAGE STORAGE	0
TOTAL	\$71,680,886

APPENDIX B TAB

CUTE / CUSS
Exhibit Reference
FY 2014-15

Appendix B

<u>Exhibit Name</u>	<u>Exhibit #</u>
Maintenance Costs	1
<ul style="list-style-type: none">• Maintenance Cost Allocation• Training Cost Allocation• Telecom Charges	
General Statistics	2
<ul style="list-style-type: none">• Ticket Counter Hours• Terminal Costs per Sq. Ft. (Class I, III & IV)• Terminal Sq. Ft. (Class I, III & IV)	
Equipment Inventory by Location	3
CUSS (Common Use Self Service) Rates	4
CUTE Back-wall Display Rates	5

Exhibit 1
FY 2015 CUTE Maintenance Expense Allocation

Equipment Costs	FY 2015 Budget
Core Room Hardware/Servers	\$0

Maintenance costs		
<u>Contractors Expense</u>		
	FY 2015 Budget	Monthly Expense
SITA (Year 2 of 7)	\$4,827,208	\$402,267
AirIT (Displays Only)--2 components		
Warranty/Replacement	\$100,000	\$8,333
O & M	175,000	14,583
Total	\$275,000	\$22,917
Telecom Charges per port	\$144	

Allocation of Maintenance Expenses			
<u>SITA Contract</u>			
	%	O&M Units	O&M Expense
Infrastructure	10.0%		\$482,721
Other	90.0%		
Gates	21.5%	612	1,036,175
Ticket Counters (includes BMU & rech units)	63.5%	1,810	3,064,506
VIP lounges (including Club America)	0.7%	20	33,862
Training	2.5%	72	188,343
Back Office (includes Operations)	1.1%	31	52,486
CUSS	0.7%	21	35,555
Total	90.0%	2,566	\$4,893,648

Training Cost Allocation			
	O&M Units	% Alloc.	Cost Alloc.
Gates	612	25.1%	\$47,201
Tkt. Ctrs.	1,810	74.1%	139,599
VIP lounges	20	0.8%	1,543
	2,442	100.0%	\$188,343

<u>AirIT Contract</u>	Unit Value	%	O&M Units	O&M Expense
<i>(Allocated to Common Use Displays only)</i>				
LCD Backwall Display Monitor	\$1,976	52.5%	441	\$144,314
LED Dynamic Signage	1,405	37.3%	441	102,671
Video Display Extenders	150	4.0%	441	10,958
Digital Video Controller	234	6.2%	441	17,058
Subtotal	\$3,764	100.0%		\$275,001
Less: LED Dyn. Sign.*				(102,671)
Total				\$172,330

* Costs recovered through Terminal cost center charges, not CUTE.

Telecom Charges			
Number of Required Ports	# of Ports	# of Locations	Charge per Location
Gates	1.0	213	\$30,672
Ticket Counters	1.0	407	58,608
Recheck Counters	1.0	34	4,896
CUSS Kiosks	1.0	21	3,024
Total		675	\$97,200

Exhibit 2
FY 2014 General Statistics

Ticket Counter (TC) Hour Calculation		
		FY 2015
# of TC hours per day per unit	[a]	4,095
# of TC positions w/ BMU	[b]	407
# of TC positions w/o BMU	[c]	373
# of days per year	[d]	360
Ticket Counter Hours w/ BMU	[=a*b*d]	600,000
Ticket Counter Hours w/o BMU	[=a*c*d]	550,000

Terminal Cost per Square Foot		
	FY2014	FY 2015
Class I	\$159.84	\$83.05
Class III (for Training Room costs)	\$79.92	\$83.05
Class IV	\$39.96	\$41.53

Class I CUTE Terminal Space Wksht		
	FY2014	FY 2015
Total Class I Space (from ldg fee model)	43,530	46,596
Less Exempt Carrier space:		
LAN-TAM ticket counter space (est. 32 pos.)	(1,920)	(1,920)
AA ticket counter space**	(9,504)	(9,504)
CAL ticket counter space**	(444)	(444)
LU ticket counter space**	(53)	(53)
DL ticket counter space**	(1,547)	(1,547)
	30,062	33,128

** Reflects Class I ticket counter space noted on carriers's monthly invoice for this line item expense.

Class III CUTE Terminal Space Wksht		
	FY2014	FY 2015
MDAD CUTE Training Room Sq Ft	800	800

Class IV CUTE Terminal Space Wksht

<u>Central/North Terminal</u>	<u>Carrousel</u>	<u>Square Ft</u>
	41	3,845
	42	5,270
Continental Airlines - Carrousel #42	(42)	(5,270)
	43	5,931
	45	5,049
	46	5,687
	47	4,005
	Interline	21,644
	50	2,795
	51	3,663
	52	4,686
	54	2,224
	62	6,326

Central/North Terminal - Subtotal **65,855**

South Terminal

South Terminal - Sort Piers	46,791
South Terminal - BMU (CC-J, 1st Fl)	6,662
Delta Airilnes - Sort Piers	0
South Terminal - Subtotal	53,453
Delta Airilnes - Sort Piers	(5,011)
Delta Airilnes - Sort Piers (eff 3/1/11)	0

South Terminal - Total **48,442**

Total Class 4 BMU sq ft **114,297**

Source: MDAD Technical Support Division

Exhibit 3
Total Inventory
CUTE - FY 2015 Projected Budget and Rates

Location	Equipment Location/Quantity											Total CUTE Equipment	CUSS Units
	Ticket Counter	Recheck	Gates	BMU (Includes Curbside)	Club America	VIP Lounge	Int'l Baggage	Ticket Counters and Gates Total	Infra-structure Training	Common Use CUTE Total	CUTE Back Office (Includes Operations)		
Equipment Device													
CPU	407	34	213	22	--	7	1	684	18	702	14	716	21
Standard Keyboard	407	34	213	22	--	7	1	684	18	702	14	716	--
Industrial Keyboard	--	--	--	--	--	--	--	--	--	--	--	--	--
Monitor	407	34	213	22	--	7	1	684	18	702	14	716	--
Boarding Pass Printer - ATB	406	27	81	8	--	6	--	528	18	546	2	548	--
Bag Tag Printer - BTP	406	27	--	8	--	--	--	441	16	457	1	458	--
Boarding Gate Reader - BGR	--	--	105	--	--	--	--	105	2	107	--	107	--
Document Scanner - MSR	--	--	--	--	--	--	--	--	--	--	--	--	--
Document Printer - DCP	33	9	70	14	--	4	1	131	9	140	10	150	--
TOTAL	2,066	165	895	96	--	31	4	3,257	99	3,356	55	3,411	21

# of O&M Units														Total
CPU	407	34	213	22	--	7	1	684	18	702	14	716	21	737
Standard Keyboard	--	--	--	--	--	--	--	--	--	--	--	--	--	--
Industrial Keyboard	--	--	--	--	--	--	--	--	--	--	--	--	--	--
Monitor	407	34	213	22	--	7	1	684	18	702	14	716	--	716
Boarding Pass Printer - ATB	406	27	81	8	--	6	--	528	18	546	2	548	--	548
Bag Tag Printer - BTP	406	27	--	8	--	--	--	441	16	457	1	458	--	458
Boarding Gate Reader - BGR	--	--	105	--	--	--	--	105	2	107	--	107	--	107
Document Scanner - MSR	--	--	--	--	--	--	--	--	--	--	--	--	--	--
Document Printer - DCP	--	--	--	--	--	--	--	--	--	--	--	--	--	--
TOTAL	1,626	122	612	60	--	20	2	2,442	72	2,514	31	2,545	21	2,566

Note: O&M units are a subset of total inventory; they reflect the items maintained by the service contractor as part of its contract with MDAD.

1. Sources:

- Ticket Counters and Rechecks - Resource Manager MDAD Properties Inventory
- Gates, BMU, Club America, VIP, Int'l Baggage, Training - MDAD/SITA list
- Backoffice - MDAD IT Department

Exhibit 4
COMMON USE SELF SERVICE (CUSS)
FY 2015 RATES
CUSS Rates Effective Oct. 1, 2014

Pricing Category		Total Cost	# of Units	Per Unit Expense	Annual Amortization Cost (1)	Annual Per Unit	Monthly Per Unit
						[a]	[a] ÷ 12
<u>Capital Costs--CUSS UNIT (Hardware/Software)</u>							
In Ticket Counter	[b]	\$0	36	\$0.00	\$0.00	\$0.00	\$0.00
Stand Alone	[c]	\$0	26	\$0.00	\$0.00	\$0.00	\$0.00
Class I Terminal Rental Costs - Stand Alone (2)	[d]			\$498.30	n/a	\$498.30	\$41.53
Current Expense Allocation (O&M Costs) (3)	[e]	\$35,555	62	\$573.47	n/a	\$573.47	\$47.79
Telecom Port Charge						\$144.00	\$12.00
TOTAL COSTS - In Ticket Counter	[b+e]					\$573.47	\$59.79
TOTAL COSTS - Stand Alone	[c+d+e]					\$1,071.77	\$101.31

n/a = not applicable

(1) Amortization charge based upon useful life of 3 yrs @ 6%.

(2) Applies to Stand Alone units only. Each Stand Alone unit includes 6 square feet of Class I space multiplied by the current Class I terminal rental rate.

For FY2015 Class I terminal rental rate per square foot = **\$83.05**

(3) Current Expense amount is based on CUSS's allocation of the annual contract with SITA.

Exhibit 5
CUTE Backwall Display Charges
FY 2015

Backwall Maximum Charge Calculation

Backwall Display O&M costs	\$172,330
Ticket Counter Hours	600,000
Backwall Hourly Rate	<u>\$0.29</u>
Hours per Day	12
Days per Month	30
Positions per Display	2
Monthly Max. Backwall Charge - (CUTE Position)	\$50.00
Annual Backwall Charge per <u>Position</u> (Monthly Max. x 12 mo.)	\$600.00
Annual Backwall Charge per <u>Display</u> (Monthly Max. x 2 x 12 mo.)	\$1,200.00

APPENDIX C

MIAMI INTERNATIONAL AIRPORT - TRAFFIC REPORT

FISCAL YEAR ENDED: SEPTEMBER 30, 2014

INTERNATIONAL*	DEPLANED	ENPLANED	TOTAL	FISCAL YEAR 10/12 - 09/13	% CHG OVR 10/12 - 09/13
PASSENGERS	10,238,786	9,877,147	20,115,933	20,015,517	0.50
FREIGHT-TONS	1,028,613	871,814	1,900,428	1,834,510	3.59
MAIL-TONS	3,177	10,995	14,172	16,355	-13.35
TOTAL CARGO-TONS	1,031,790	882,810	1,914,599	1,850,865	3.44
COMMERCIAL AIRCRAFT MVM	99,698	89,596	189,294	189,558	-0.14
LANDED WEIGHT (1,000 LBS)			22,157,206	21,323,070	3.91
ARRIVING PASSENGERS & CREW REQUIRING FEDERAL INSP.			10,340,865	10,266,370	0.73
SEATS	13,242,181	12,623,895	25,866,076	25,163,449	2.79

DOMESTIC **	DEPLANED	ENPLANED	TOTAL	FISCAL YEAR 10/12 - 09/13	% CHG OVR 10/12 - 09/13
PASSENGERS	10,386,247	10,342,784	20,729,031	20,099,788	3.13
FREIGHT-TONS	149,019	106,014	255,032	261,518	-2.48
MAIL-TONS	8,052	9,790	17,842	22,560	-20.91
TOTAL CARGO-TONS	157,071	115,803	272,874	284,078	-3.94
COMMERCIAL AIRCRAFT MVM	99,036	108,931	207,967	203,797	2.05
LANDED WEIGHT (1,000 LBS)			13,141,290	13,115,308	0.20
SEATS	11,736,109	12,362,113	24,098,222	23,563,476	2.27

COMBINED TOTALS	DEPLANED	ENPLANED	TOTAL	FISCAL YEAR 10/12 - 09/13	% CHG OVR 10/12 - 09/13
PASSENGERS	20,625,033	20,219,931	40,844,964	40,115,305	1.82
FREIGHT-TONS	1,177,632	977,828	2,155,460	2,096,028	2.84
MAIL-TONS	11,228	20,785	32,014	38,915	-17.74
TOTAL CARGO-TONS	1,188,860	998,613	2,187,474	2,134,943	2.46
COMMERCIAL AIRCRAFT MVM	198,734	198,527	397,261	393,355	0.99
LANDED WEIGHT (1,000 LBS)			35,298,496	34,438,378	2.50
SEATS	24,978,290	24,986,008	49,964,298	48,726,925	2.54

AIRCRAFT OPERATIONS (LANDINGS PLUS TAKEOFFS) FAA TOWER DATA

AIR CARRIER	312,600				
AIR TAXI	69,009				
GENERAL AVIATION	18,294			FISCAL YEAR	% CHG OVR
MILITARY	919			10/12 - 09/13	10/12 - 09/13
TOTAL	400,822			396,678	1.04

FREIGHT = FREIGHT PLUS EXPRESS. TOTAL CARGO = FREIGHT PLUS MAIL

*TO AND FROM POINTS OUTSIDE U.S. JURISDICTION

**TO AND FROM POINTS WITHIN U.S. JURISDICTION

***THIS NUMBER DOES NOT INCLUDE CREW TOTALS FOR MARCH 09 THRU SEPTEMBER 09

MIAMI-DADE AVIATION DEPARTMENT: P.O.BOX 526624, MIAMI, FL. 33152

FINAL

C-1

Finance & Strategy Group:

**Financial Planning & Performance Analysis
Division**

**P.O. Box 526624
Miami, FL 33152-6624
www.miami-airport.com**

